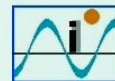


Software Interface System
For
**Geophysical Data Access and
Management System**
(*GPDAMS-CD*)

Technical Report No. NIO/TR-5-2004



GPDAMS



Pravin D. Kunte

Indian Oceanographic Data Centre
National Institute of Oceanography
Dona Paula, Goa – 403 004.
August - 2004

EXECUTIVE SUMMARY

ACKNOWLEDGMENT

CONTENTS

The GPDAMS - CD

Introduction

2. Description of geophysical database:

3. Quantum of Geophysical data

4. Purpose and scope:

-
-
-
-
-
-
-
-
-
-

5. Geophysical Data management strategy at IODC

NIO - GeoPhysical Data Access System -
Process Input Data

Enter Data Values and Format

Enter Data

Inocd Cruise No. 314
 Inocd Station No. 1
 Org Cruise No. 231
 Org Station No.
 Country Code 41
 Institute Code NIO
 Ship Code GV
 Line Id 3

Latitude Longitude

North - South Form

Format

Direct
 Degree, Min, Min Part
 Degree, Min, Sec

Latitude Longitude

Latitude Column 10 Longitude Column 11

Date

Reading Date Hour Min Second

Type dd-mm-yyyy mm-dd-yyyy dd-mm Year: 1992

Separator / -

Free Air Anomaly
 Brough Anomaly
 Siesmic Shot Point

Map Parameters Columns

Field Name	Column
Actual Depth	
Total Magnetic Field	13
Magnetic Anomaly	
Residual Field	12
Observed Gravity	
EOTVOS	

Open File Import Cancel

5	6	7	8	9	10	11	12	13
Month	year	HH	MM	ss	LAT(N)	LONG(E)	Res.anom	TMF
7	1992	19	0	0	12.233	80.25	-193	40430
7	1992	19	1	0	12.235	80.251	-192.4	40431
7	1992	19	2	0	12.236	80.252	-191.8	40432
7	1992	19	3	0	12.238	80.253	-193.2	40431
7	1992	19	4	0	12.239	80.254	-193.6	40431

6. Access to Factual data

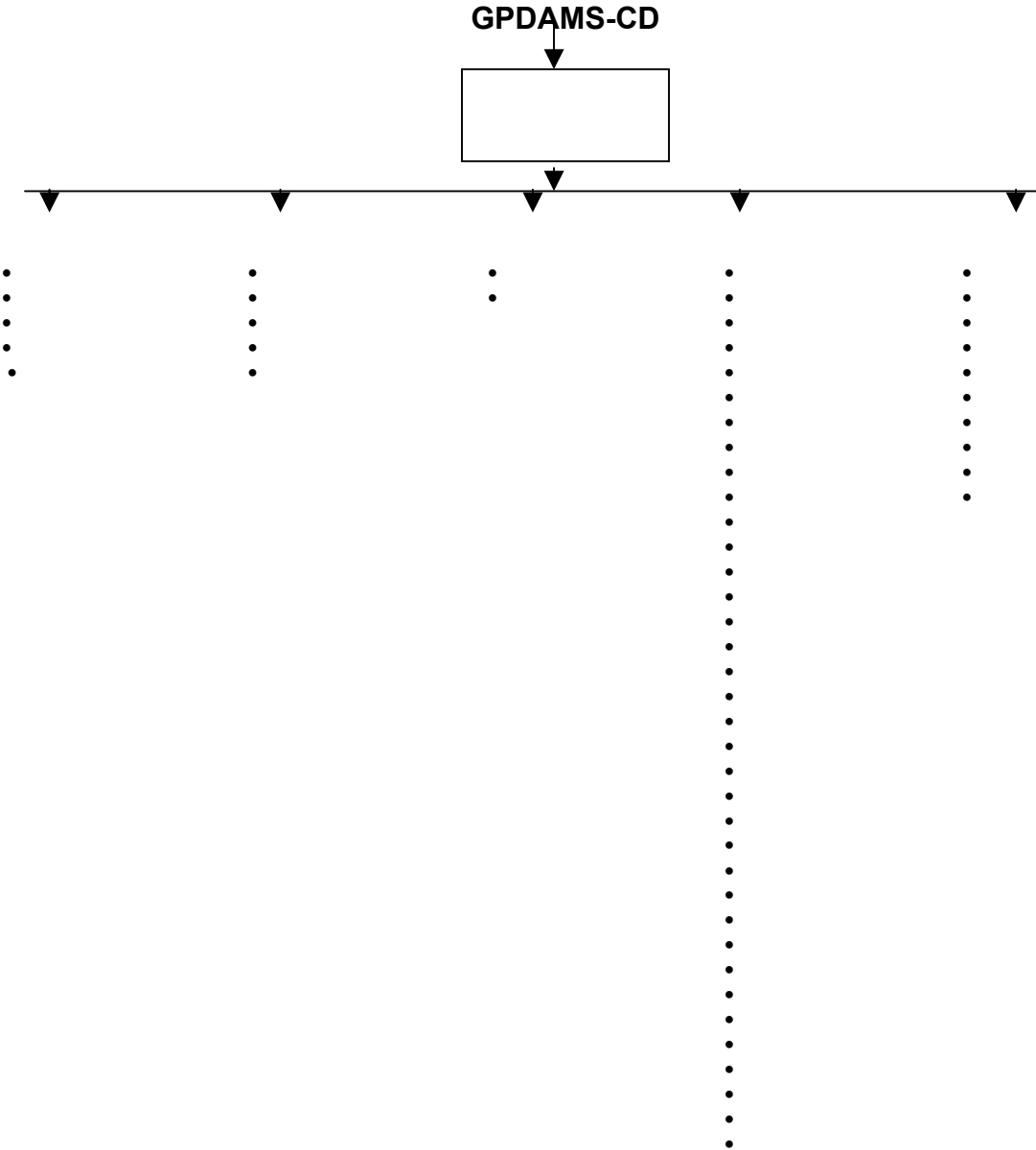
3.

7. Environment Details

Hardware Requirement:

Software Requirement:

8. GPDAMS Software Modules



Major Action

Major Action:

Major Action:

Administration - Data Management (Administrative Module)

Major Action:

Major Action:

Major Action:

Major Action:

Major Action:

Major Action:

Major Action:

Windows

Major Action:

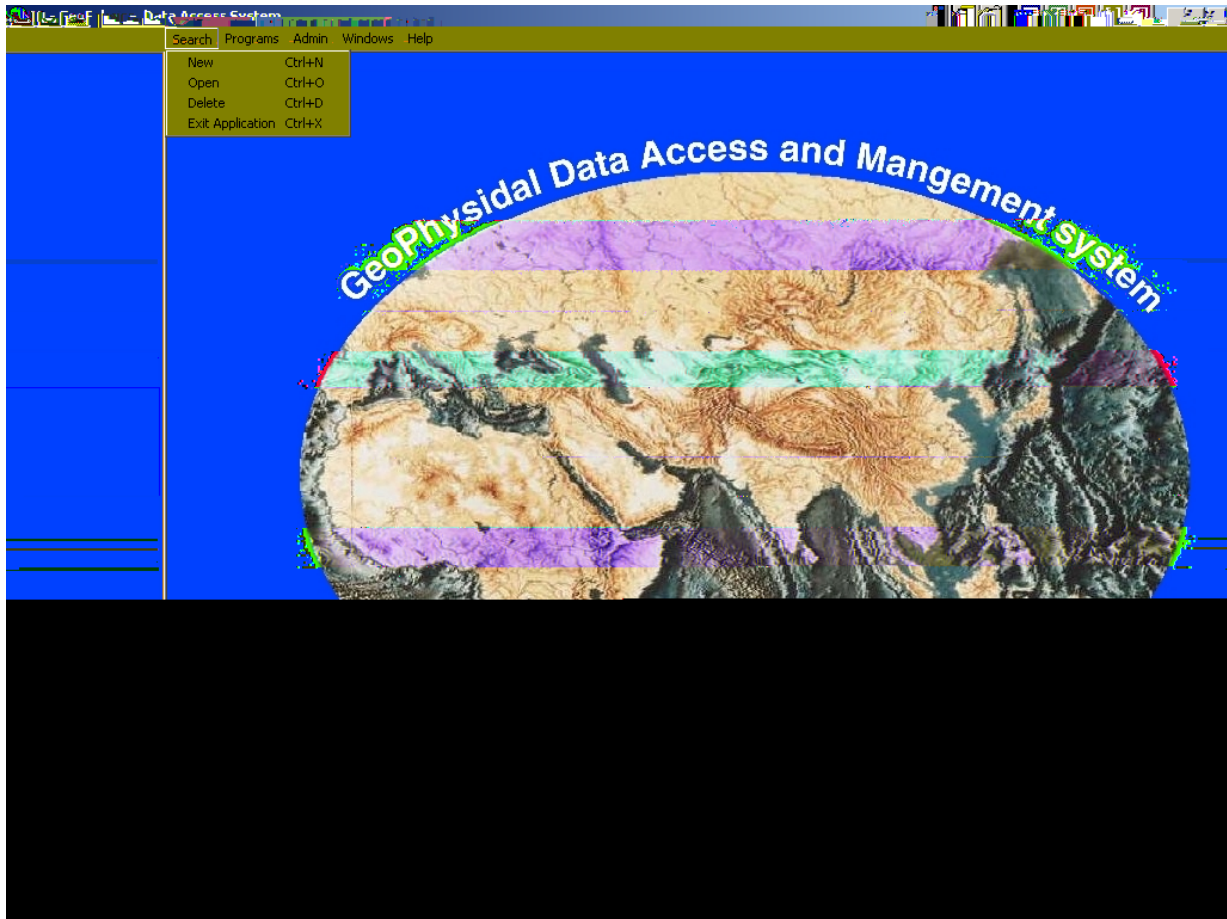
Help

Major Action:

Major Action:

9. User Interface – Screen Sequence

9.1 Initial Screen



Search Programs Admin Windows Help

Search Key :

Title :

Select The type to Enable Parameter Selection

Select Database	<input checked="" type="checkbox"/>	Database
Parameters Surveyed	<input checked="" type="checkbox"/>	Parameter
Contributing Source/Project		Source
Survey Identifier	<input checked="" type="checkbox"/>	Ship ID
Search Area		Area
Survey Date		Date
EEZ		EEZ

9.2.1 Ship and cruise selection screen

For International database

Select Source

Include
 Exclude

Include
 Exclude

Ship IDs	Org Cruise No.	Inodc Cruise No.
ATLANTIS II	ANTAC10	0
CHAIN	ANTAC21B	0
CHARLES DARWIN	ANTAC23	0
CONRAD	ANTAC8B	0
D/V GLOMAR CHALLENGER	ANTAC9A	0
DMITRIJ MENDELEEV	ANTAC9B	0
FUJI		
HAKUHO MARU		
HMS BEAGLE		
HMS BOXER		

OK Cancel Clear

For National (NIO) database

NIO - GeoPhysical Data Access System - [Select Ship]

Search Programs Admin Windows Help

Select Source

Include
 Exclude

Include
 Exclude

Ship IDs	Org Cruise No.	Inodc Cruise No.
AS	0039	744
FR	0045	750
GV	020A	723
NR	114	823
SK	125	835
	15	718
	154	864
	22	726
	31	736
	42	747

OK Cancel Clear

NIO - GeoPhysical Data Access System - [Set Data Parameter]

Search Programs Admin Windows Help

Parameters

Operator
 Union Intersection

Bathymetry Actual Depth
 Corrected Depth

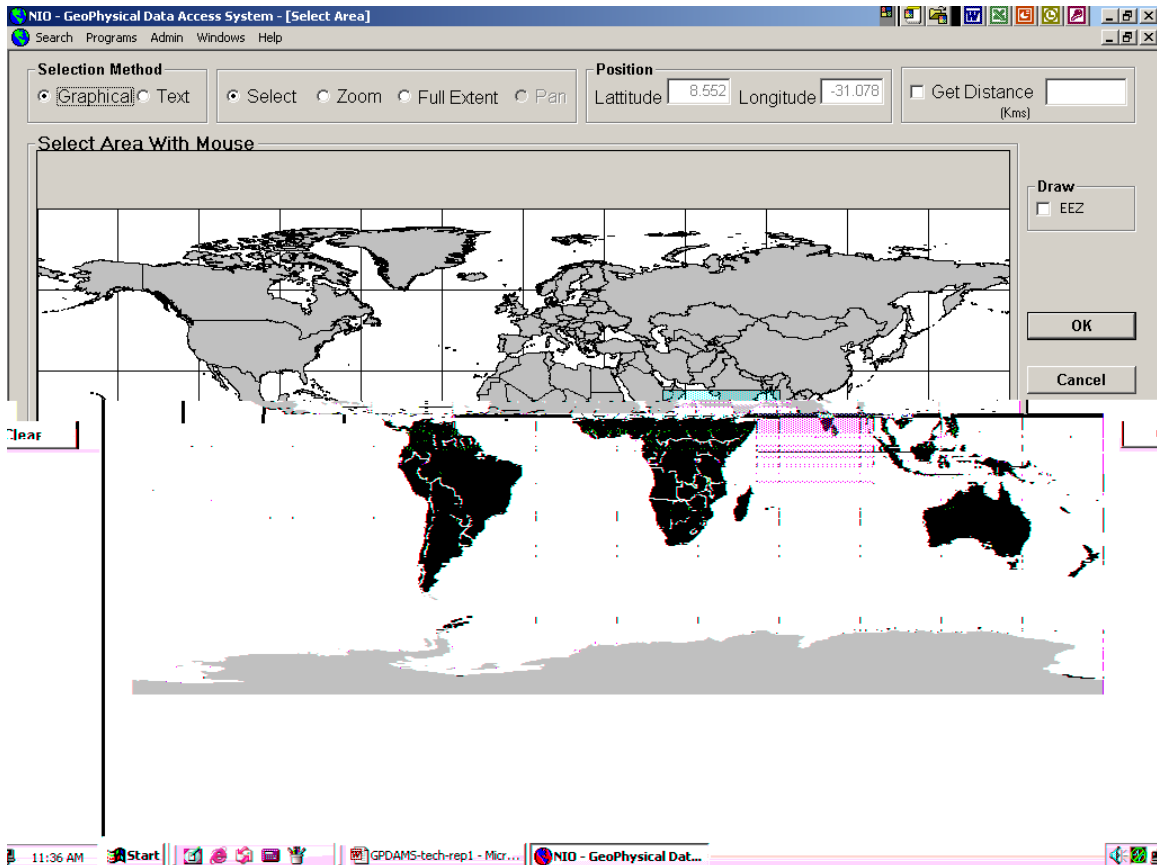
Magnetics Magnetic Anomaly
 Total Magnetic Field
 Residual Field

Gravity Observed Gravity
 Free air Anomaly
 EOTVOS Correction
 Brougar Anomaly

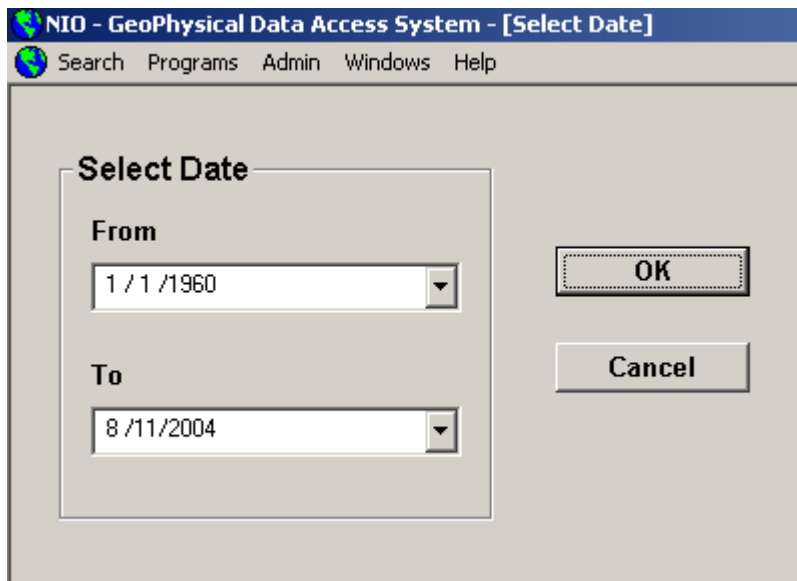
Seismic Shot Point

OK
Cancel
Clear

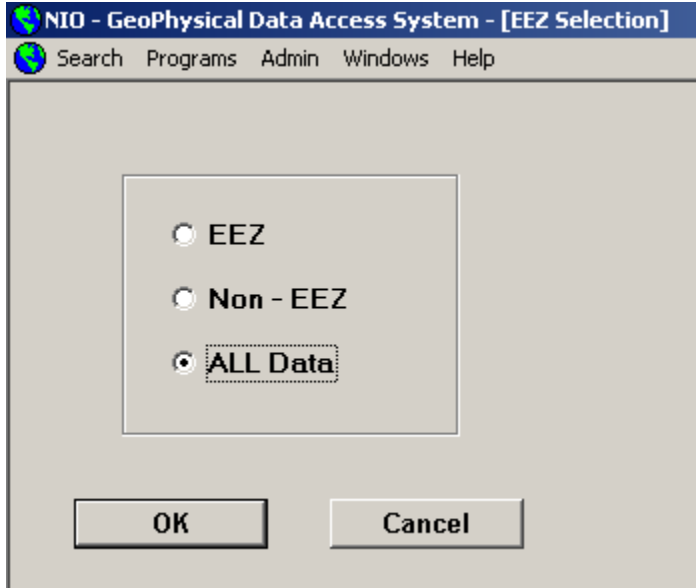
Area Selection Screen :



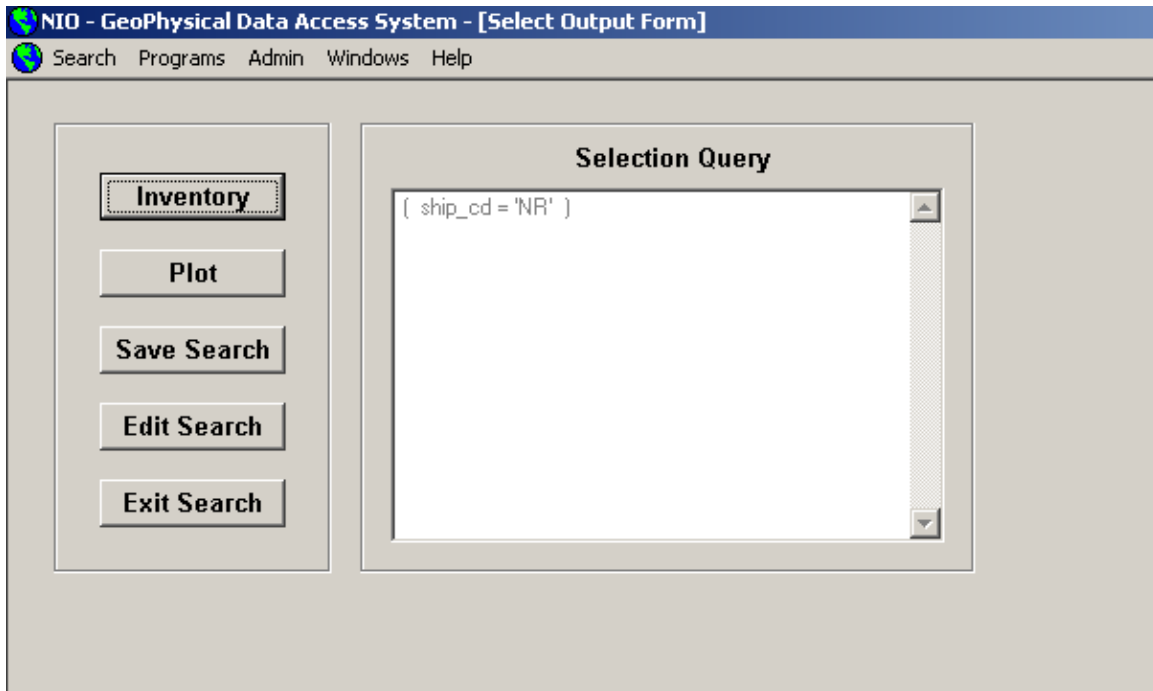
9.2.4 Date Selection Screen:

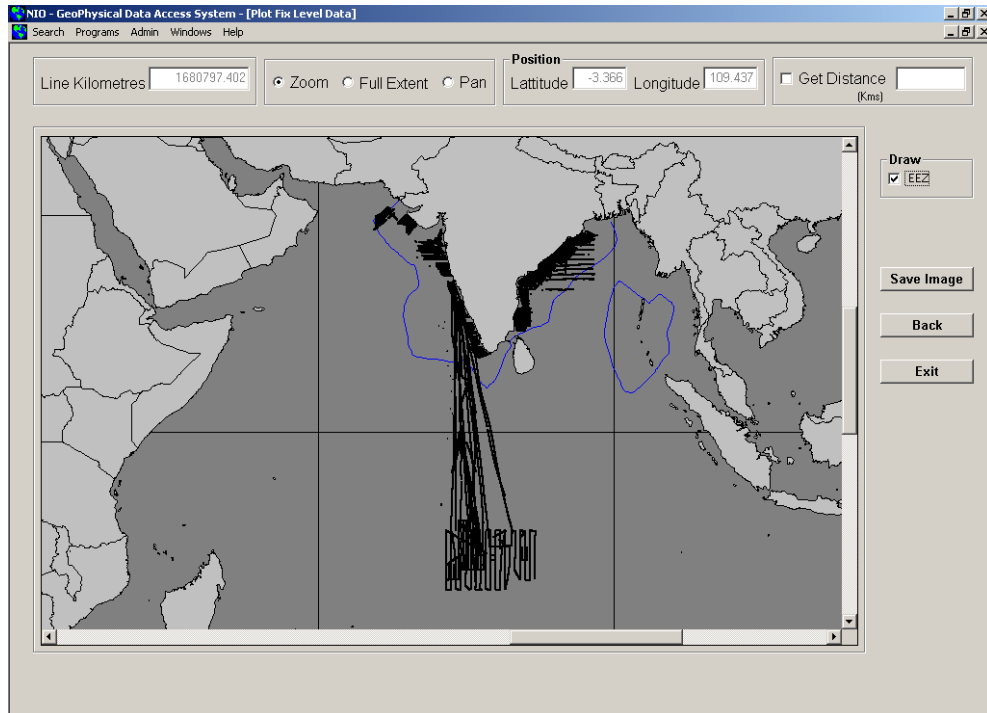
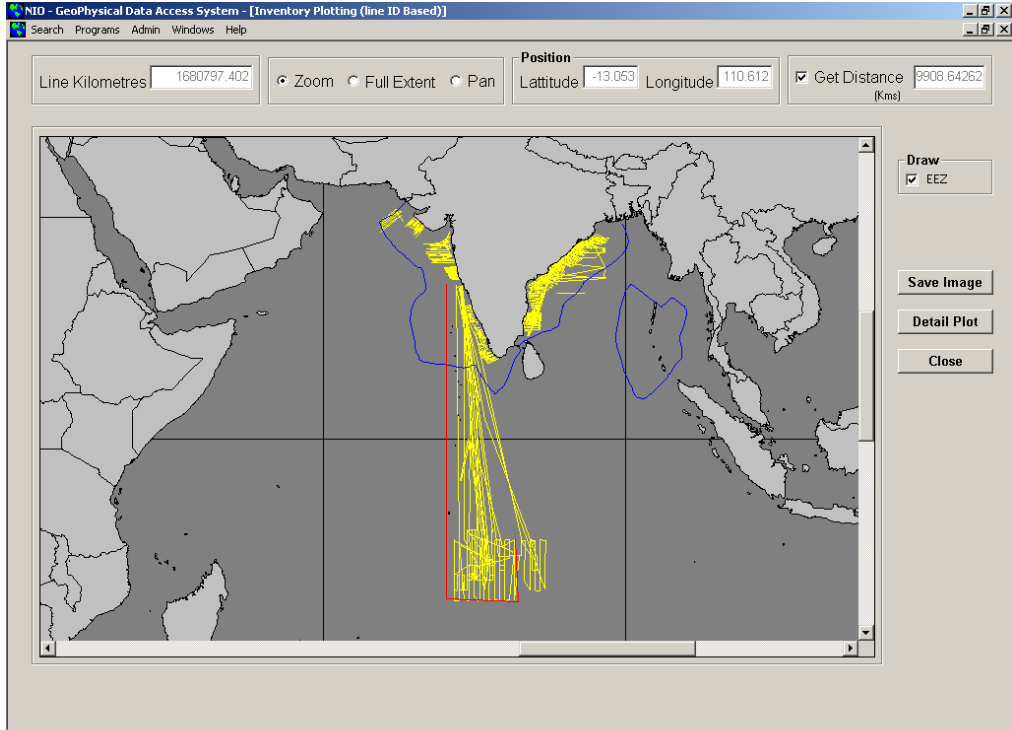


9.2.5 Data selection – Within or outside EEZ:



9.3 Select output screen:





Inventory of the Data Selected

Summary

Latitude : To

Longitude : To

Survey IDs (Line IDs) Included :

Size of Data To be Downloaded : Kb

No. Of Records :

Parameters Selected :

Download

Save Inventory

Close

Select fields to download

- INODC_CR_N
- INODC_ST_N
- ORG_CR_NO
- ORG_ST_NO
- SHIP_CD
- COUNTRY_CD
- INST_CD
- READING_DT
- LINE_ID
- LATITUDE
- LONGITUDE
- ACT_DEPTH
- EEZ
- CORR_DEPTH
- TOT_MAG_FI
- MAG_ANO
- RES_FIELD
- OBS_GRAVIT
- EOTVOS
- FREE_AIR_A
- BROUG_ANO
- SEISMIC_SH

Select All

Select None

OK

Back

Exit

NIO - GeoPhysical Data Access System - [Selected Data]

Search Programs Admin Windows Help

INODC CR #	INODC ST	ORG CR NO	ORG ST N	SHIP CD	COUNTRY C	INST CD	READING DT	LINE ID	LATITUDE
274	4875	192	0686	GV	41	NIO	2/27/1988	10	15.978
274	4876	192	0687	GV	41	NIO	2/28/1988	10	15.979
274	4877	192	0688	GV	41	NIO	2/28/1988	10	15.981
274	4878	192	0689	GV	41	NIO	2/28/1988	10	15.982
274	4879	192	0690	GV	41	NIO	2/28/1988	10	15.967
274	4880	192	0691	GV	41	NIO	2/28/1988	10	15.969
274	4881	192	0692	GV	41	NIO	2/28/1988	10	15.971
274	4882	192	0693	GV	41	NIO	2/28/1988	10	15.972
274	4883	192	0694	GV	41	NIO	2/28/1988	10	15.974
274	4884	192	0695	GV	41	NIO	2/28/1988	10	15.976
274	4885	192	0696	GV	41	NIO	2/28/1988	10	15.977
274	4886	192	0697	GV	41	NIO	2/28/1988	10	15.979
274	4887	192	0698	GV	41	NIO	2/28/1988	10	15.981
274	4888	192	0699	GV	41	NIO	2/28/1988	10	15.982
274	4889	192	0700	GV	41	NIO	2/28/1988	10	15.984
274	4890	192	0701	GV	41	NIO	2/28/1988	10	15.986
274	4891	192	0702	GV	41	NIO	2/28/1988	10	15.987
274	4892	192	0703	GV	41	NIO	2/28/1988	10	15.989
274	4893	192	0704	GV	41	NIO	2/28/1988	10	15.991
274	4894	192	0705	GV	41	NIO	2/28/1988	10	15.992
274	4895	192	0706	GV	41	NIO	2/28/1988	10	15.994
274	4896	192	0707	GV	41	NIO	2/28/1988	10	15.996
274	4897	192	0708	GV	41	NIO	2/28/1988	10	15.997
274	4898	192	0709	GV	41	NIO	2/28/1988	10	15.999
127	501	72	1	GV	41	NIO	4/1/1980	C	18.837
127	502	72	2	GV	41	NIO	4/1/1980	C	18.834
127	503	72	3	GV	41	NIO	4/1/1980	C	18.833
127	504	72	4	GV	41	NIO	4/1/1980	C	18.833
127	505	72	5	GV	41	NIO	4/1/1980	C	18.833
127	506	72	6	GV	41	NIO	4/1/1980	C	18.836

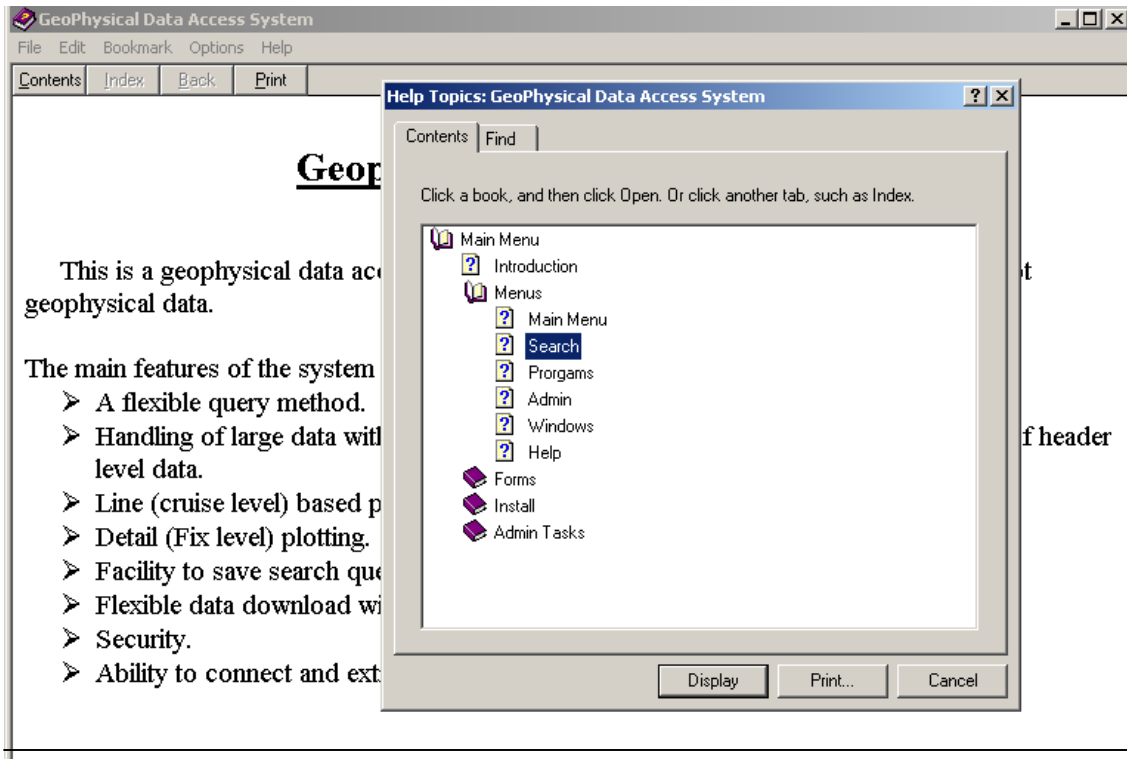
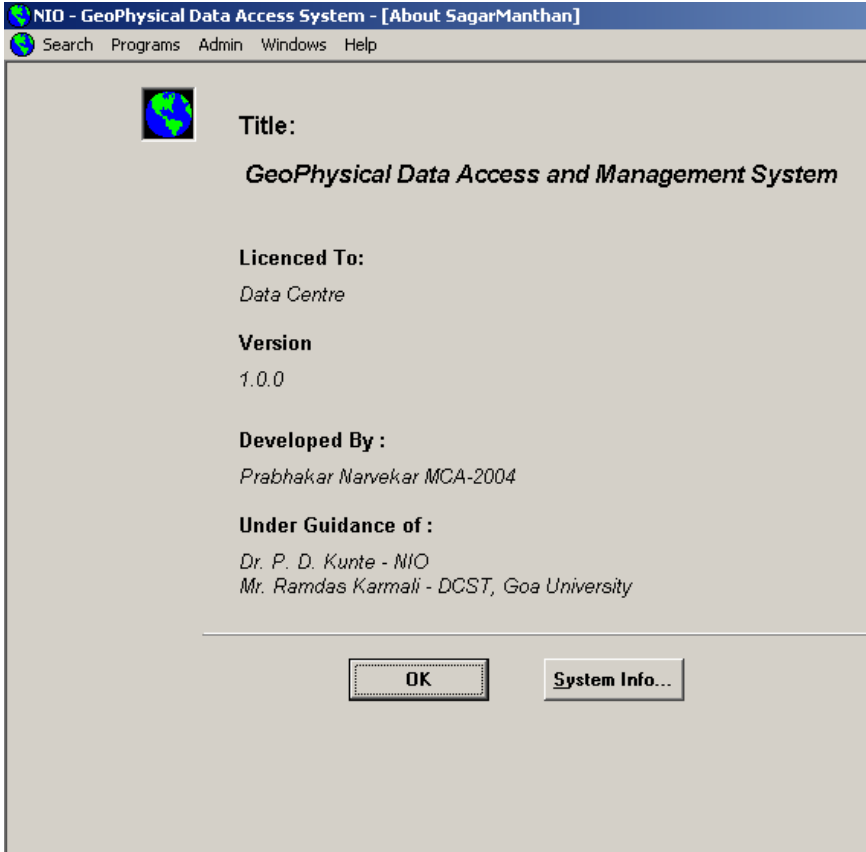
Record Selected : 1/170797 Download Back Close

9.8. Data Management (Administrative) Screen :

NIO - GeoPhysical Data Access System - [Type of Data]

Search Programs Admin Windows Help

- Security
- Logout Ctrl+L
- Statistics Generation ▶
- Assign EEZ
- Import from Excel file
- Import International Data
- Read International Header
- Map International Data From Header



•
•