

## ANALYSIS OF LEAD INGOTS FROM AN 18TH CENTURY SHIPWRECK NEAR POOMPUHAR

*Dr. R.R. Nair and G. Parthihan*

National Institute of Oceanography

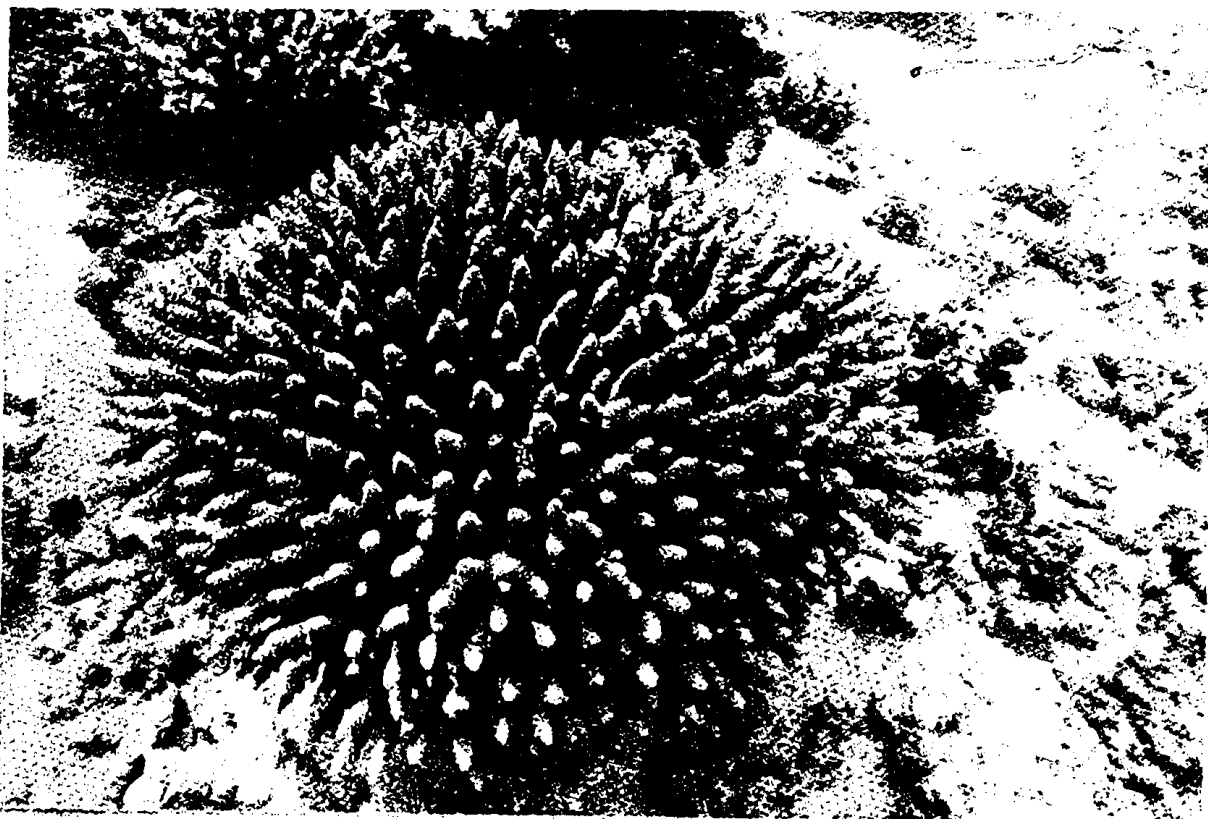
Dona Paula - Goa 403 004.

### Elemental Concentration of the Lead Sample (Archaeological)

Sl. No.	Element	Con.	Remark
1.	LEAD	93±1.5%	IN%
2.	GOLD	<10	PPM
3.	NICKEL	<6	PPM
4.	ZINC	8±1	PPM
5.	CHROMIUM	<10	PPM
6.	CADMIUM	<3	PPM
7.	COPPER	130±5	PPM
8.	ANTIMONY	<20	PPM
9.	IRON	72±5	PPM

\* GOLD, NICKEL, CHROMIUM AND ANTIMONY CONCENTRATIONS WERE WITHIN DETECTION LIMITS.

\* ANALYSED ON AAS 5000 INSTRUMENT BY FLAME TECHNIQUE.



*(Photographed by S.N. Bandodker, Marine Archaeology, NIO.)*