

Identification of *Balanus amphitrite* larvae from field zooplankton using species specific primers

CHE TAN C. GAONKAR, LIDITA KHANDEPARKER*, DAT TESH V. DESAI AND

ARGA CHANDRASHEKAR ANIL

National Institute of Oceanography, Council of Scientific and Industrial Research, Goa- 403004, India

*Corresponding author: Email: klidita@nio.org; Tel: 91-832-2450432; Fax: 91-832-2450615

Abstracts

Identification of marine invertebrate larvae using morphological characters is laborious and complexed with phenotypic plasticity. *Balanus amphitrite* is a dominant barnacle, important in the context of intertidal ecology and biofouling of manmade structures. Morphological identification of barnacle larval forms in a mixed population is tricky because of their intricacy and similarity in size, shape and developmental stages. We report the development and application of nucleic acid based Polymerase Chain Reaction (PCR) method for the specific identification of the barnacle, *B. amphitrite*, from the heterogenous zooplankton sample. This method is reliable and accurate thereby overcoming taxonomic ambiguity. Sequence alignment of the 18S rRNA gene region of selected species of barnacles allowed designing of *B. amphitrite* specific PCR primers. Assay specificity was evaluated by screening DNA obtained from selected species of barnacles. The oligonucleotide primers used in the study flanked a 1600 bp region within the 18S rRNA gene. The primer is specific and can detect as less as 10 individuals of *B. amphitrite* larvae spiked in a background of ~186 mg of zooplankton. This technique facilitates accurate identification and the primer can be used as a marker for enumeration of *B. amphitrite* larvae in the plankton.

Keywords: Barnacle; *Balanus amphitrite*; Larvae; Zooplankton; 18S rRNA

INTRODUCTION

Larval ecology studies help in understanding the population dynamics, community patterns, ecosystem structure and biodiversity of native and invasive species (Webb *et al.*, 2006). Identification of marine invertebrate larvae is a tedious, labor intensive task by expert taxonomists. Traditionally, morphological characters used in planktonic larval identification are tricky because of larval intricacy and similarity in size, shape and developmental stages and confound only to their adult forms (Chanley & Andrews, 1971; Branscomb & Vedder, 1982; Shanks, 1986; Nichols & Black, 1994). Due to their small size, shape and similar developmental stages, it is difficult to identify these larvae morphologically, where they play a pivotal role in taxonomic identification (Levin, 1990). Sometimes larval identification becomes extremely difficult due to phenotypic plasticity (Hebert, 2002).

Molecular techniques have the potential to accurately identify the organism to its species level, thereby overcoming taxonomic ambiguity. Identification and quantification of marine invertebrate larvae is made easy using molecular techniques (Baldwin *et al.*, 1996; Bilodeau *et al.*, 1999; Makinster *et al.*, 1999; Morgan & Rogers, 2001; Deagle *et al.*, 2003; Larsen *et al.*, 2005; Vadopalas *et al.*, 2006; Jones *et al.*, 2008; Chen *et al.*, 2013). Polymerase Chain Reaction (PCR) along with sequencing has led to accurate identification of any organism to its species level. Appropriate use of specific primers can facilitate rapid, sensitive and accurate detection of any individual species in a population. Some molecular techniques which assist in identification or characterization of organisms are DNA barcoding (Hebert *et al.*, 2003a,b); Random amplified polymorphic DNA (Coffroth & Mulawka, 1995); multiplex PCR (Hare *et al.*, 2000); Middle repetitive sequence analysis (MaKinster *et al.*, 1999); Amplified fragment length polymorphism (Bucklin, 2000; Rogers, 2001); Restriction fragment length polymorphism and Single strand conformation polymorphism analysis (Hillis *et al.*, 1996). Oligonucleotide probes used for specific detection of individual larvae in a mixed population are either concise till family level (Bell & Grassle, 1998), genus level (Frischer *et al.*, 2000) or to species level (Frischer *et al.*, 2000; Hare *et al.*, 2000). Molecular tools with respect to PCR based approaches are more reliable and frequently used in larval identification (Hare *et al.*, 2000; Wood *et al.*, 2003; Webb *et al.*, 2006; Chen *et al.*, 2013).

Barnacles are of major concern in biofouling studies around the world. They have drawn the attention of many investigations in marine plankton ecology owing to their easy accessibility on the rocky intertidal regions and also because some species are dominant in marine fouling (Strathmann *et al.*, 1981; Crisp,

1984; Connell, 1985; Sutherland, 1990; Holm, 1990; Raimondi, 1991; Bertness *et al.*, 1991; Thiagarajan *et al.*, 1997a, b). Barnacles possess both planktotrophic and a lecithotrophic larval stage, which settle and metamorphose on hard substratum resulting in macrofouling. Morphological identification of barnacle larval forms in a population is difficult because of their intricacy and similarity in size, shape and developmental stages, requires extensive microscopy and taxonomic expertise.

Balanus amphitrite, an acorn barnacle, has wide distribution, can be easily maintained in the laboratory, and possess six planktonic naupliar stages followed by a pre-settlement cypris stage. This species has been extensively used in different studies related to larval development, metamorphosis, influence of different chemical cues and antifouling assays (Rittschof *et al.*, 1984; Maki *et al.*, 1988; Clare *et al.*, 1994; Anil *et al.*, 1995; Khandeparker *et al.*, 2003, 2006, 2011). Since *B. amphitrite* larvae are the primary target of investigations related to biofouling and plankton ecology, their quick enumeration and identification is crucial. In the present study, a PCR based approach was used for detection of a dominant fouling barnacle, *B. amphitrite* (syn. *Amphibalanus amphitrite*; Pitombo, 2004) larvae from the mixed population.

Mitochondrial DNA and nuclear DNA have been the major targets for species identification due to their high conservation and high copy numbers per cell (Stach & Tubeville, 2002). Application of mtDNA (12S and 16S) has been useful for species identification, because sequences from various kinds of species have been deposited in database. Identification of barnacles, based on analysis of 12S and 16S rRNA gene has been reported by Begum *et al.* (2004) and Simon-Blecher *et al.* (2007). Recently, a species specific primer for quantitative real time PCR (qPCR) was evaluated for specific detection and quantification of *B. amphitrite* using 12S rRNA gene (Endo *et al.*, 2010). Nucleic acid based sandwich hybridization assays using rRNA target probe was used for barnacle detection of the group-(order Thoracica) and species-(*Balanus glandula*) which could detect as less as single barnacle larva in water column (Goffredi *et al.*, 2006). Designing of the species specific primers within the 18S rRNA gene region helps in detecting individual species, since 18S rRNA gene regions are slowly evolved among different orders and families, including invertebrates (Winnepeninckx *et al.*, 1995; Bleidorn *et al.*, 2003; Pradillon *et al.*, 2007). In the present study an attempt was made to develop species specific primers within the 18S rRNA gene region which has not been attempted earlier for *B. amphitrite* and this provides an additional dimension to this field, especially with reference to identification of *B. amphitrite* larvae in a mixed zooplankton sample. The primers were designed by comparing the 18S rRNA sequences of closely related *Balanus* sp. and evaluating the conserved region within the 18S rRNA gene

sequence. This approach for planktonic larval detection is less tedious compared to morphological microscopic examination and less expensive than other DNA based approaches.

MATERIALS AND METHODS

Sample Collection

Adult *B. amphitrite* were collected from the intertidal region of Goa, West Coast of India. Adults obtained from field samples were brought to the laboratory and exposed to air for 1-2 h and then immersed in filtered seawater, which triggered the release of larvae. The Instar II nauplius larvae obtained from the adults were used as a positive control and for internal spiking in the present investigation. Horizontal hauls were taken for collection of zooplankton using 100- μ m mesh Heron-Tranter (HT) zooplankton net with a calibrated flow meter attached to it in the vicinity of Dona Paula Bay (15° 27.5' N, 73° 48' E), west coast of India. The plankton samples were either preserved in 95% ethanol or directly processed for DNA isolation and PCR analysis. The preserved samples were quantified for the presence of cirripede larvae. The number of larvae present in different samples varied from 50 to 4000 ind m⁻³. Four other barnacle species (*Chthamalus malayensis*, *Megabalanus tintinnabulum*, *Lepas* sp. and *Ibla* sp.) were also collected from the study area. The adult barnacles were identified based on the morphological features as described by (Karande, 1967; Wagh & Bal, 1970; Henry & McLaughlin, 1975; Flowerdew, 1985; Pitombo, 2004; Fernando, 2006). They were collected for extraction of genomic DNA and verification of primer's specificity.

Extraction of genomic DNA

The adults of *B. amphitrite* were starved overnight prior to DNA extraction. Genomic DNA was extracted from adult barnacles namely *B. amphitrite*, *Chthamalus malayensis*, *Megabalanus tintinnabulum*, *Lepas* sp. and *Ibla* sp. Whole adult muscle tissue was used for genomic DNA isolation. DNA extracted from newly hatched *Artemia* sp. nauplii was used as control. The zooplankton samples were weighed and then subjected to DNA extraction using DNA Extraction solution (GeneI, India). The extracted DNA was visualized on a 0.8% Agarose gel stained with Ethidium bromide and observed under UV illumination.

Designing of *B. amphitrite* species specific primers

18S rRNA gene sequences of barnacles (Table 1) were obtained from the NCBI Genebank (<http://www.ncbi.nlm.nih.gov/>) and compiled. These 18S rRNA gene sequences were aligned using

Clustal X 1.8 (Thompson *et al.*, 1997). Since the sequence of *B. amphitrite* 18S rRNA gene was not available in any of the databases, primers were designed by selecting a short highly conserved region within the 5' end region between barnacles with few mismatches in the last five nucleotides in 3' region of the primer (Table 1). Target primers were designed in the gene region where there were mismatch pair related with other barnacle species. Primers were manually designed using BioEdit, with standard priming conditions like primer length, self annealing, possible loops, GC content and melting temperature (T_m), which were evaluated every time during each primer design. During our analysis, some of the 3' end nucleotides of the forward primer were changed in order to eliminate strong loop, self annealing or primer dimer formation.

Polymerase Chain Reaction

DNA isolated from the adult samples was used for PCR amplification of the 18S rRNA gene. DNA amplification of the 18S rRNA gene region was performed using primers which annealed only with the *B. amphitrite* species. 5 μ L of extracted DNA was used for PCR amplification using a PTC 200 Thermal cycler (MJ Research). PCR reaction was carried out with a 50 μ L reaction mixture containing 10mM of each dNTPs, 20pmoles of each primer, 1U of Taq polymerase, 1X PCR reaction buffer containing 10mM MgCl₂. Amplification of the 18S rRNA gene region was carried out using *B. amphitrite* specific primers (Table 2). The thermal cycler was programmed using a touchdown PCR protocol. One cycle of 94°C for 2 min, followed with 35 cycles of 1 min at 94°C, 45 sec at 58°C, 1 min at 72°C and final cycle of 10 min at 72°C. The resulting fragments were resolved electrophoretically on 1% agarose gel for 1 h at 90V. The resulting amplicons were compared with a commercial 1Kb DNA ladder (Genetix, India). Amplification was carried out in replicates and batches, to determine the specificity, sensitivity and reproducibility of the designed primers.

Verification of primer's specificity

Primer specificity was evaluated by PCR amplification of 18S rRNA gene region using extracted genomic DNA from five other barnacle species (*Chthamalus malayensis*, *Megabalanus tintinnabulum*, *Lepas* sp. and *Ibla* sp.) other than *B. amphitrite*. The designed primers amplified ~1600bp amplicons only from the *B. amphitrite* (Fig. 1). However, other species of barnacles did not show amplification with similar primer and PCR conditions. PCR amplification using gDNA from *Artemia* sp. also showed no amplicon, resulting as negative control for the designed primers.

Evaluation of primers for *B. amphitrite* specificity

DNA isolated from mixed zooplankton samples were subjected to PCR amplification using the above protocol. The zooplankton samples were screened under microscope and all cirripede larvae were eliminated which were used as control, in order to check the specificity of our designed primers. In order to check the presence or absence of any PCR inhibitors in extracted DNA, the zooplankton samples without cirripede larvae, were spiked with 10 and 100 larvae (Instar II) of *B. amphitrite*. Owing to small size and low DNA content in case of Instar II barnacle nauplii one larva could not be amplified. DNA isolated from *Artemia* sp. was used as control.

RESULTS AND DISCUSSION

Alignment of the 18S rRNA gene sequences of barnacles (Table 1) obtained from Genebank were evaluated using Clustal X. Sequences of all individuals revealed a high rate of conservation within the 18S rRNA gene region. Very low mismatch regions were present within the 18S rRNA gene region of *Balanus* sp. The forward primer was designed in this region because it had a conserved 5' end with few mismatch at the 3' region and the reverse primer was designed in conserved region compared with other barnacles (Table 1). The designed primers amplified ~1600bp amplicons only from the *B. amphitrite* species (Fig. 1).

DNA extracted from the mixed planktonic population showed positive result when amplified with the *B. amphitrite* specific primer, indicating the presence of *B. amphitrite* larvae in mixed sample. The zooplankton sample without cirripede larvae were spiked with 10 and 100 numbers of *B. amphitrite* larvae, produced ~1600bp fragment stating the sensitivity of the designed primer for the specific detection of *B. amphitrite* and also eliminating the presence of any PCR inhibitors (Fig. 2). In the present study a simple and inexpensive methodology was adopted for the specific detection of *B. amphitrite* larvae in a mixed population. 18S rRNA genes contain both regions which are highly conserved or variable, specific primers can be targeted to these characteristic sites for families, genus or species (Amann *et al.*, 1990). Mostly these ribosomal regions are best suited for probe designing (Peplies *et al.*, 2004). In the present study we used this information for designing species specific primers. However, 28S and the mitochondrial rRNA (12S and 16S rRNA) gene regions can also be used for such studies if there is no single mismatch in 18S rRNA gene, within the species level. Identification of organisms using 12S rRNA gene sequence has also been attempted in detection and quantification of barnacle larvae in plankton samples using qPCR (Endo *et al.*, 2010). It has a high inter specific

variability along with low intra specific variability (Hebert *et al.*, 2003). In environmental sample where mixed population of species is present, a nested PCR approach has also been used to resolve the individual species (Patil *et al.*, 2005b). They developed species specific PCR assays for the detection of single species of dinoflagellate, *Gymnodinium catenatum* in both environmental samples and in ballast water. The specificity of the primer showed that upto 5 cysts of *G. catenatum* can be detected in mixed populations. Similar results were achieved in detecting larval forms in Pacific oysters *Crassostrea gigas* (Patil *et al.*, 2005a), Tropical oyster *C. belchiri* (Klinbunga *et al.*, 2000) and in the sea star *Asterias* sp. (Deagle *et al.*, 2003) using PCR based approach.

In the present study, efficiency of the PCR assay was enhanced by increasing the number of target species. Primer sensitivity was cross checked with all available barnacle species in the study location. *B. amphitrite* specific primers did not amplify the other barnacle species, indicating that the primers were specific only to *B. amphitrite*. The presence of PCR inhibitors in zooplankton sample was ruled out by conducting a PCR with zooplankton spiked with known numbers of *B. amphitrite* larvae. The resulting amplicons in these samples resulted in PCR success, ruling out the presence of any PCR inhibitors.

We demonstrate that the *B. amphitrite* larvae can be detected with extreme sensitivity by PCR amplification using the 18S species specific primers designed in this study. Application of this method for detection of the *B. amphitrite* larvae in a mixed population can facilitate accurate screening of large number of samples and solve significant problems associated with larval ecology. Also this approach can be used to differentiate *B. amphitrite* larvae with that of the closely related groups of barnacles within the mixed community of barnacles. Real-time PCR (qPCR) is recently recognized as an effective device for detection and quantification of different planktonic organisms in a mixed population. In future this tool can be adopted using the designed *B. amphitrite* specific primers in the present study for quantification of *B. amphitrite* in the plankton.

ACKNOWLEDGEMENTS

We are grateful to Dr. Satish R Shetye, the Director National Institute of Oceanography, Goa for his support and encouragement. We acknowledge the help provided by Dr. Rakhee Khandeparker and other colleagues of BBD during this study. This work was carried out as a part of Ballast Water Management Program, India that was funded by Directorate General of Shipping, Government of India. This is a NIO contribution #####.

REFERENCES

- Anil A.C., Chiba K., Okamoto K. and Kurokura H.** (1995) Influence of temperature and salinity on larval development of *Balanus amphitrite*: implications in fouling ecology. *Marine Ecology Progress Series* 118, 159–166.
- Amann R.I., Krumholz L. and Stahl D.A.** (1990) Fluorescent-oligonucleotide probing of whole cells for determinative, phylogenetic, and environmental studies in microbiology. *Journal of Bacteriology* 172, 762–770.
- Baldwin B.S., Black M., Sanjur O., Gustafson R., Lutz R.A. and Vrijenhoek R.C.** (1996) A diagnostic molecular marker for zebra mussels (*Dreissena polymorpha*) and potentially co-occurring bivalves: mitochondrial COI. *Marine Molecular Biology and Biotechnology* 5, 9-14.
- Begum R.A., Yamaguchi T. and Watabe S.** (2004) Molecular phylogeny of thoracican barnacles based on the mitochondrial 12S and 16S rRNA genes. *Sessile Organisms* 21, 47-54.
- Bell J.L. and Grassle J.P.** (1998) A DNA probe for identification of larvae of the commercial surf clam (*Spisula solidissima*). *Marine Molecular Biology and Biotechnology* 7, 127-137.
- Bertness M.D., Gaines S.P., Bermudez D. and Sandford E.** (1991) Extreme spatial variation in the growth and reproductive output of the acorn barnacle *Semibalanus balanoides*. *Marine Ecology Progress Series* 75, 91–100.
- Bilodeau A.L., Lankford W.S., Kim T.J., Felder D.L. and Neigel J.E.** (1999) An ultra sensitive method for detection of single crab larvae (*Sesarma reticulatum*) by PCR amplification of a highly repetitive DNA sequence. *Marine Ecology* 8, 683-684.
- Bleidorn C., Vogt L. and Bartolomaeus T.** (2003) New insights into polychaete phylogeny (Annelida) inferred from 18S rDNA sequences. *Molecular Phylogenetics and Evolution* 29, 279–288.
- Branscomb E.S. and Vedder K.** (1982) A Description of the Naupliar Stages of the Barnacles *Balanus glandula* Darwin, *Balanus cariosus* Pallas, and *Balanus crenatus* Bruguière (Cirripedia, Thoracica). *Crustaceana*, 42, 83-95.
- Bucklin A.** (2000) Methods for population genetic analysis of zooplankton. In: Harris R.P., Wiebe P.H., Lenz J., Skjoldal H.R. and Huntley M. (eds) *ICES Zooplankton Methodology Manual*. Academic Press, London, pp 533-570.
- Chanley P. and Andrews J.D.** (1971). Aids for identification of bivalve larvae of Virginia. *Malacologia* 11, 45-119.
- Chen H.-N., Hoeg J.T. and Chan B.K.K.** (2013). Morphometric and molecular identification of individual barnacle cyprids from wild plankton: an approach to detecting fouling and invasive barnacle species. *Biofouling* 29(2), 133-145.

- Clare A.S., Freet R.K. and McClary Jr. M.** (1994) On the antennular secretions of the cyprid of *Balanus amphitrite*, and its role as a settlement pheromone. *Journal of the Marine Biological Association of the UK* 74, 243–250.
- Coffroth M.A. and Mulawka III J.M.** (1995) Identification of marine invertebrate larvae by means of PCR-RAPD species specific markers. *Limnology and Oceanography* 40, 181–189.
- Connell J.H.** (1985) The consequences of variation in initial settlement vs. post-settlement mortality in rocky intertidal communities. *Journal of Experimental Marine Biology and Ecology* 93, 11–45.
- Crisp D.J.** (1984) Overview of research on marine invertebrate larvae. In: Costlow J.D. and Tipper R.C. (eds) *Marine biodeterioration: an interdisciplinary study*. Naval Institute Press, Annapolis, pp 103–126.
- Deagle B.E., Bax N.J., Hewitt C.L. and Patil J.G.** (2003) Development and evaluation of a PCR-based test for detection of *Asterias* (Echinodermata: Asteroidea) larvae in Australian plankton samples from ballast water. *Marine and Freshwater Research* 54, 709–719.
- Endo N., Sato K., Matsumura K., Yoshimura E., Odaka Y. and Nogata Y.** (2010) Species-specific detection and quantification of common barnacle larvae from the Japanese coast using quantitative real time PCR. *Biofouling* 26, 901–911.
- Fernando S.A.** (2006) Monograph on Indian barnacles. OSTC Marine Benthos-02, Ocean Science and Technology Cell, CUSAT, Kochi, pp. 219.
- Flowerdew M.W.** (1985) Indices of genetic identity and distance in three taxa within the *Balanus amphitrite* Darwin complex (Cirripedia, Thoracica). *Crustaceana* 49 (1), 7–15.
- Frischer M.E., Danforth J.M., Tyner L.C., Leverone J.R., Marelli D.C., Arnold W.S. and Blake N.J.** (2000) Development of an *Argopecten*-specific 18S rRNA targeted genetic probe. *Marine Biotechnology* 2, 11–20.
- Goffredi S.K., Jones W.J., Scholin C.A., Marin R. and Vrijenhoek R.C.** (2006) Molecular detection of marine invertebrate larvae. *Marine Biotechnology* 8, 149–160.
- Hare M.P., Palumbi S.R. and Butman C.A.** (2000) Single-step species identification of bivalve larvae using multiplex polymerase chain reaction. *Marine Biology* 137, 953–961.
- Hebert P.D.N.** (2002) Life in polar waters. *Integrative and Comparative Biology* 42, 1242.
- Hebert P.D.N., Cywinska A., Ball S.L. and deWaard J.R.** (2003a) Biological identifications through DNA barcodes. *Proceedings of the Royal Society of London B* 270, 313–321.
- Hebert P.D.N., Ratnasingham S. and deWaard J.R.** (2003b) Barcoding animal life: cytochrome c oxidase subunit 1 divergences among closely related species. *Proceedings of the Royal Society of London B* 270, 596–599.
- Henry D.P. and McLaughlin P.A.** (1975) The barnacles of the *Balanus amphitrite* complex (Cirripedia, Thoracica). *Zoologische Verhandelingen Leiden* 141, 1–254.

- Hillis D.M., Mable B.K. and Moritz C.** (1996) Applications of molecular systematics: the state of the field and a look to the future. In: Hillis D.M., Moritz C. and Mable B.K. (eds) *Molecular Systematics*. Sinauer Associates, Sunderland, pp. 515–543.
- Holm E.R.** (1990) Attachment behavior in the barnacle *Balanus amphitrite amphitrite* (Darwin): genetic and environmental effects. *Journal of Experimental Marine Biology and Ecology* 135 (2), 85–98.
- Jones W.J., Preston C., Marin R., Scholin C.A. and Vrijenhoek R.C.** (2008) A robotic molecular method for in situ detection of marine invertebrate larvae. *Molecular Ecology Resources* 8, 540-550.
- Karande A.A.** (1967) On cirripede crustaceans (barnacles), an important fouling group in Bombay waters. Proceedings Symposium on Crustacea. *Marine Biological Association of India* 2/4, 1942-1953.
- Khandeparker L., Anil A.C. and Raghukumar S.** (2003) Barnacle larval destination: piloting possibilities by bacteria and lectin interaction. *Journal of Experimental Marine Biology and Ecology* 289, 1–13.
- Khandeparker L., Anil A.C. and Raghukumar S.** (2006) Relevance of biofilm bacteria in modulating the larval metamorphosis of *Balanus amphitrite* Darwin. *FEMS Microbiology Ecology* 58:425–438.
- Khandeparker L. and Anil A.C.** (2011) Role of conspecific cues and sugars in the settlement of cyprids of the barnacle, *Balanus amphitrite*. *Journal of Zoology* 284, 206–214.
- Klinbunga S., Ampayup P., Tassanakajon A., Jarayabhand P. and Yoosukh W.** (2000) Development of Species-Specific Markers of the Tropical Oyster (*Crassostrea belcheri*) in Thailand. *Marine Biotechnology* 2, 476–484.
- Larsen J.B., Frischer M.E., Rasmussen L.J. and Hansen B.W.** (2005) Single-step nested multiplex PCR to differentiate between various bivalve larvae. *Marine Biology* 146, 1119–1129.
- Levin L.A.** (1990) A review of methods for labeling and tracking marine invertebrate larvae. *Ophelia* 32, 115-144.
- Maki J.S., Rittschof D., Costlow J.D. and Mitchell R.** (1988) Inhibition of attachment of larval barnacles, *Balanus amphitrite*, by bacterial films. *Marine Biology* 97, 199–206.
- MaKinster J.G., Felder D.L., Chlan C., Boudreaux M. and Neigel J.E.** (1999) PCR amplification of a middle repetitive element detects larval stone crabs (Crustacea: Decapoda: Menippidae) in estuarine plankton samples. *Marine Ecology Progress Series* 181, 161–168.
- Morgan T.S. and Rogers A.D.** (2001) Specificity and sensitivity of microsatellite markers for the identification of larvae. *Marine Biology* 139, 967–973.
- Nichols S.J. and Black M.G.** (1994) Identification of larvae: the zebra mussel (*Dreissena polymorpha*), quagga mussel (*Dreissena rostriformis bugensis*), and Asian clam (*Corbicula fluminea*). *Canadian Journal of Zoology* 72, 406-417.

- Patil J.G., Gunasekera R.M., Deagle B.E. and Bax N.J.** (2005a) Specific detection of Pacific oyster (*Crassostrea gigas*) larvae in plankton samples using nested polymerase chain reaction. *Marine Biotechnology* 7, 11-20.
- Patil J.G., Gunasekera R.M., Deagle B.E., Bax N.J. and Blackburn S.I.** (2005b) Development and evaluation of a PCR based assay for detection of the toxic dinoflagellate, *Gymnodinium catenatum* (Graham) in ballast water and environmental samples. *Biological Invasions* 7, 983-994.
- Peplies J., Glockner F.O., Amann R. and Ludwig W.** (2004) Comparative sequence analysis and oligonucleotide probe design based on 23S rRNA genes of Alphaproteobacteria from North Sea bacterioplankton. *Systematic and Applied Microbiology* 27, 573–580.
- Pitombo F.B.** (2004) Phylogenetic analysis of the Balanidae (Cirripedia, Balanomorpha). *Zoologica Scripta*, 33 (3), 261-276.
- Pradillon F., Schmidt A., Peplies J. and Dubilier N.** (2007) Species identification of marine invertebrate early stages by whole larvae in situ hybridisation of 18S ribosomal RNA. *Marine Ecology Progress Series* 333, 103-116.
- Raimondi P.T.** (1991) Settlement behavior of *Chthamalus anisopoma* larvae largely determines the adult distribution. *Oecologia* 85, 349–360.
- Rittschof D., Branscomb E.S. and Costlow J.D.** (1984) Settlement and behavior in relation to flow and surface in larval barnacles, *Balanus amphitrite* Darwin. *Journal of Experimental Marine Biology and Ecology* 82, 131–146.
- Rogers A.** (2001) Molecular Ecology and Identification of marine invertebrate larvae. In: Atkinson D. and Thorndyke M. (eds) *Environment and Animal development: Genes, Life Histories and Plasticity*. BIOS Scientific Publishers, Oxford, pp. 29-69.
- Shanks A.L.** (1986) Tidal periodicity in the daily settlement of intertidal barnacle larvae and an hypothesized mechanism for the cross-shelf transport of cyprids. *Biological Bulletin* 170, 429–440.
- Simon-Blecher N., Huchon D. and Achituv Y.** (2007) Phylogeny of coral inhabiting barnacles (Cirripedia; Thoracica; Pyrgomatidae) based on 12S, 16S and 18S rDNA analysis. *Molecular Phylogenetics and Evolution* 44, 1333-1341.
- Stach T. and Tubeville J.M.** (2002) Phylogeny of Tunicata inferred from molecular and morphological characters. *Molecular Phylogenetics and Evolution* 25, 408-428.
- Strathmann R.R., Branscomb E.S. and Vedder, K.** (1981) Fatal errors in set as a cost of dispersal and the influence of intertidal flora on set of barnacles. *Oecologia* 48, 13–18.
- Sutherland J.P.** (1990) Recruitment regulates demographic variation in a tropical intertidal barnacle. *Ecology* 71, 955–972.

Thiyagarajan V., Venugopalan V.P., Nair K.V.K. and Subramoniam T. (1997a) Larval description of *Balanus reticulatus* Utinomi (Cirripedia, Balanidae), reared in the laboratory. *Journal of Experimental Marine Biology and Ecology* **209**, 215-231.

Thiyagarajan V., Venugopalan V.P., Subramoniam T. and Nair K.V.K. (1997b) Description of the naupliar stages of *Megabalanus tintinnabulum* (Cirrepedia: Balanidae). *Journal of Crustacean Biology* **17(2)**, 332-342.

Thompson J.D., Gibson T.J., Plewnaik F., Jeanmougin F. and Higgins D.G. (1997) The Clustal X windows interface: flexible strategies for multiple sequence alignment aided by quality analysis tools. *Nucleic Acids Research* **25**, 4876–4882.

Vadopalas B., Bouma J.V., Jackels C.R. and Friedman C.S. (2006) Application of real-time PCR for simultaneous identification and quantification of larval abalone. *Journal of Experimental Marine Biology and Ecology* **334**, 219–228.

Wagh A.B. and Bal D.V. (1970) Observations on systematic of sessile barnacles from the west coast of India-1. *Journal Bombay natural History Society* **71(1)**, 109-123.

Webb K.E., Barnes D.K.A., Clark M.S. and Bowden D.A. (2006) DNA barcoding: A molecular tool to identify Antarctic marine larvae. *Deep-Sea Research II* **53**, 1053–1060.

Winnepenninckx B., Backeljau T. and de Wachter R. (1995) Phylogeny of protostome worms derived from 18S rRNA sequences. *Molecular Biology and Evolution* **12**, 641–649.

and

Wood A., Krogran N.J., Dover J., Schneider J., Heidt J., Boateng M.A., Dean K., Golshani A., Zhang Y., Greenblatt J.F., Johnston M. and Shilatifard A. (2003) Bre1, an E3 ubiquitin ligase required for recruitment and substrate selection of Rad6 at a promoter. *Molecular Cell* **11**, 267–274.

Legends to tables

Table 1. *Balanus amphitrite* specific primers aligned with the corresponding sequence from other available barnacles.

Table 2. Sequences of Oligonucleotide Primers used for Species Specific Detection of *Balanus amphitrite*.

Legends to figures

Figure 1. Agarose gel electrophoresis of PCR amplified 1600bp product of the 18S rRNA gene from *Balanus amphitrite* using specific primers. Left lane represents standard size markers (1Kb DNA ladder, Chromous). Lane 1 is control using *Artemia* sp., Lane 2 is the PCR product of 18S rRNA gene region using *B. amphitrite* genomic DNA as template. Lane 3 to 6 are genomic DNA from other known available barnacles as template: *Megabalanus tintinnabulum* (3); *Chthamalus malayensis* (4); *Lepas* sp. (5); *Ibla* sp. (6).

Figure 2. PCR detection of *Balanus amphitrite* larvae in plankton sample. Left lane contains standard size markers (1Kb DNA ladder, Chromous). Lane 1 is control. Lane 2 is zooplankton without cirrepede larvae. Lane 3 is PCR product of zooplankton. Lane 4 is zooplankton (without cirrepede larvae) spiked with 10 numbers of *B. amphitrite* larvae. Lane 5 is PCR product of zooplankton (without cirrepede larvae) spiked with 100 numbers of *B. amphitrite* larvae.



Figure 1. Agarose gel electrophoresis of PCR amplified 1600bp product of the 18S rRNA gene from *Balanus amphitrite* using specific primers. Left lane represents standard size markers (1Kb DNA ladder, Chromous). Lane 1 is control using *Artemia* sp., Lane 2 is the PCR product of 18S rRNA gene region using *B. amphitrite* genomic DNA as template. Lane 3 to 6 are genomic DNA from other known available barnacles as template: *Megabalanus tintinnabulum* (3); *Chthamalus malayensis* (4); *Lepas* sp. (5); *Ibla* sp. (6).

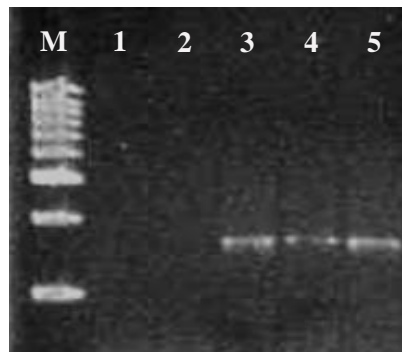


Figure 2. PCR detection of *Balanus amphitrite* larvae in plankton sample. Left lane contains standard size markers (1Kb DNA ladder, Chromous). Lane 1 is control. Lane 2 is zooplankton without cirrepede larvae. Lane 3 is PCR product of zooplankton. Lane 4 is zooplankton (without cirrepede larvae) spiked with 10 numbers of *B. amphitrite* larvae. Lane 5 is PCR product of zooplankton (without cirrepede larvae) spiked with 100 numbers of *B. amphitrite* larvae.

Table 1. *Balanus amphitrite* specific primers aligned with the corresponding sequence from other available barnacles.

<i>Species</i>	<i>Forward Primer Sequence</i>	<i>Reverse Primer Sequence</i>
<i>B. amphitrite</i>	CATGCAACCGAGCCCCAGTCCAG	CCTAGACTGGCAGCTGGCTTCGGC
<i>B. perforatus</i>GT.C.T.
<i>B. crenatus</i>GTCTC.
<i>B. nubilus</i>G.G.C..A.C.
<i>B. glandula</i>GTCTT.
<i>Megabalanus tintinnabulum</i>GTC.C.
<i>Chthamalus</i> sp.T..
<i>Lepas</i> sp.G.C.
<i>Ibla</i> sp.G.C.

A dot represents similar nucleotides within the primer sequence

Table 2. Sequences of oligonucleotide primers used for species specific detection of *Balanus amphitrite*.

Primer Name	Oligonucleotide sequence	Treatment	Source
BAF127	5'- CATGCAACCGAGCCCCAGTCCAG- 3'	Amplification	Present study
BAR1735	5'- CCTAGACTGGCAGCTGGCTTCGGC- 3'	Amplification	Present study