

PROCEEDINGS
OF THE
BIOLOGICAL SOCIETY OF WASHINGTON

A REVIEW OF THE COPEPOD *SCOTTOCALANUS*
SECURIFRONS (T. SCOTT) AND A NOTE ON
ITS SYNONYM *SCOLECITHRIX CUNEIFRONS* WILLEY
(CALANOIDA: SCOLECITHRICIDAE)

BY T. C. GOPALAKRISHNAN

Regional Centre of National Institute of Oceanography
(C. S. I. R.) Cochin, India

ABSTRACT

Scottocalanus securifrons from the International Indian Ocean Expedition Collections is described and compared with that of T. Scott 1893, A. Scott 1909, Tanaka 1961, *Lophothrix securifrons* Wolfenden 1904 and *Scolecithrix cuneifrons* Willey 1918. A thorough examination of the descriptions of *securifrons* and *cuneifrons* and the examination of ♀ syntypes of *S. securifrons* from the British Museum revealed a doubtful existence of *Scolecithrix cuneifrons* as a distinct species. Hence it is considered as a synonym of *S. securifrons* in agreement with Vervoort (1965).

INTRODUCTION

While studying the scolecithricid copepods collected during the International Indian Ocean Expedition 1960-65 (IIOE) I encountered a number of specimens of both sexes belonging to the genus *Scottocalanus* Sars. Upon comparing the IIOE specimens with published descriptions of species of *Scottocalanus*, I found good agreement with *S. securifrons* (T. Scott, 1893) and also with *S. cuneifrons* (Willey, 1918). The IIOE specimens are assigned to the older *S. securifrons* and described below.

Scottocalanus securifrons (T. Scott)

(Figure 1 a-g, Figure 2 a-c, Figure 3 a-h)

Scolecithrix securifrons T. Scott, 1893, p. 47, pl. 4, figs. 40-56, pl. 5, fig. 1 [♀ only, ♂ = *Scottocalanus helenae* (Lubbock)].—Giesbrecht and Schmeil, 1898, p. 49.—van Breemen, 1908, p. 76, fig. 88 [♀ only].—Canu, 1896, p. 425.—Thompson, 1903, p. 20.—Norman 1903, p. 137.—Cleve, 1904, p. 197.—Cons. Explor. Mer, 1909, p. 99.—Jespersen, 1940, p. 36.

Lophothrix securifrons Wolfenden, 1904, p. 120, pl. 9, figs. 12-15.

Lophothrix securifrons (T. Scott).—Wolfenden, 1911, p. 269.

Scottocalanus acutus Sars, 1905, p. 7.

Scolecithrix cuneifrons Willey, 1918, p. 194, figs. 17-24.

Scottocalanus securifrons (T. Scott).—Sars, 1905, p. 7 [by implication]; 1912, p. 654; 1924-1925, p. 160-162, pl. 45 figs. 1-8.—Pearson, 1906, p. 19.—Farran, 1908, p. 57; 1920, p. 18, 21; 1926, p. 267; 1929, p. 251.—Paulsen, 1909, p. 127.—A. Scott, 1909, p. 104, pl. 25 figs. 1-9, pl. 28 figs. 1-9.—Stebbing, 1910, p. 529.—With, 1915, p. 220, pl. 8 fig. 13, text figs. 71-73.—Cons. Explor. Mer, 1916, p. 57.—Lysholm and Nordgaard, 1921, p. 21.—Rose, 1929, p. 26; 1933, p. 144, fig. 144; 1942, p. 148.—Wilson, 1936, p. 91; 1950, p. 340.—Tanaka, 1937, p. 259, figs. 9a-c; 1953, p. 132; 1961, p. 141-143, fig. 106; 1969, p. 275.—Leavitt, 1938, p. 384.—Lysholm, Nordgaard and Wiborg, 1945, p. 26.—Sewell, 1947, p. 143.—Fraser and Saville, 1949a, pp. 61, 63.—Brodsky, 1950, p. 242, fig. 152.—Wiborg, 1955, p. 51.—Hida and King, 1955, p. 11.—Marques, 1956, p. 15; 1958, p. 225; 1959, p. 211.—Heinrich, 1958b, p. 1029.—Vinogradov, 1960, p. 502.—Grice, 1962, p. 213, pl. 19 figs. 12-15.—Grice and Hart, 1962, appendix, tab.—Owre, 1962, p. 492.—Vervoort, 1965, p. 36.—Fleminger, 1967, p. 194.—Owre and Foyo, 1967, p. 63, figs. 98, 400-403, 409, 410.—Park, 1970, p. 476.—Bowman, 1971, p. 34.

Description of the specimens: Female. Length 4.2 mm. Head and first thoracic segment, 4th and 5th thoracic segments fused. Head with high median crest (Fig. 1c). Last thoracic segment produced posteriorly into triangular expansion terminating in sharp pointed spine on either side. Rostrum bifid at tip (Fig. 2a). Abdomen 4-segmented. Genital segment swollen ventrally at mid-length; its ventral posterior margin overlapping the following segment (Fig. 1d). Posterolateral margins of genital segment furnished with spines which are absent on dorsal and ventral side (Fig. 1e). A. Scott (1909) shows spines on the posterior margin of the genital segment present on the dorsal as well as lateral surfaces. Posterior margins of 2nd and 3rd abdominal segments with a hyaline fringe (Fig. 1e). Anal segment very short. Caudal rami almost as wide as long, each with 4 setae.

First antenna with 23 separate segments, when the partly separated 8th and 9th segments are counted as one (Fig. 1a). First maxilla with

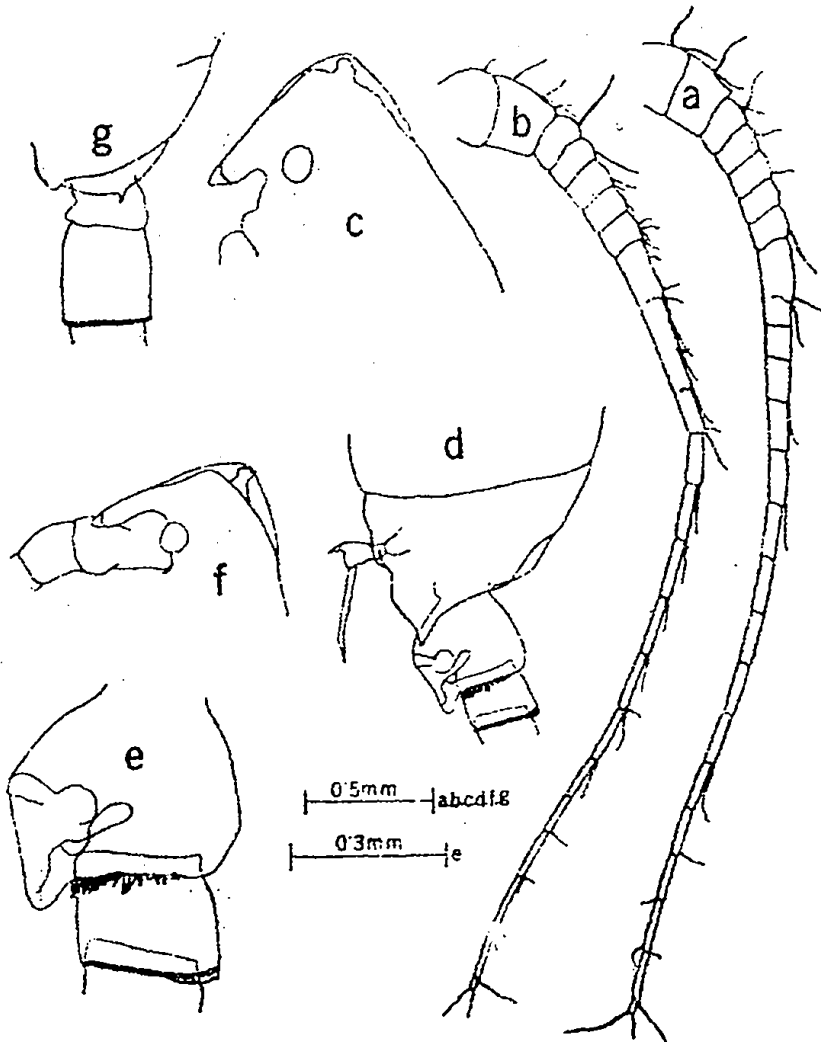


FIG. 1. *Scottocalanus securifrons*. a, 1st antenna ♀; b, 1st antenna ♂; c, frontal profile ♀; d, last thoracic segment and genital segment ♀; e, genital segment ♀, enlarged; f, frontal profile ♂; g, last thoracic segment ♂.

numbers of setae on different lobes as follows (Fig. 2 b): Inner lobe 1 with 12 setae of which 3 are on posterior surface; inner lobe 2 with 2 setae; inner lobe 3 with 3 setae; basipod 2 with 5 setae; endopod segment 1 with 3 setae; endopod segments 2 and 3 together with 4 setae; exopod with 8 setae; outer lobe with 9 setae. Exopod segment with fine surface hairs at distal end. Second maxilla endopod with 4 bud-like and

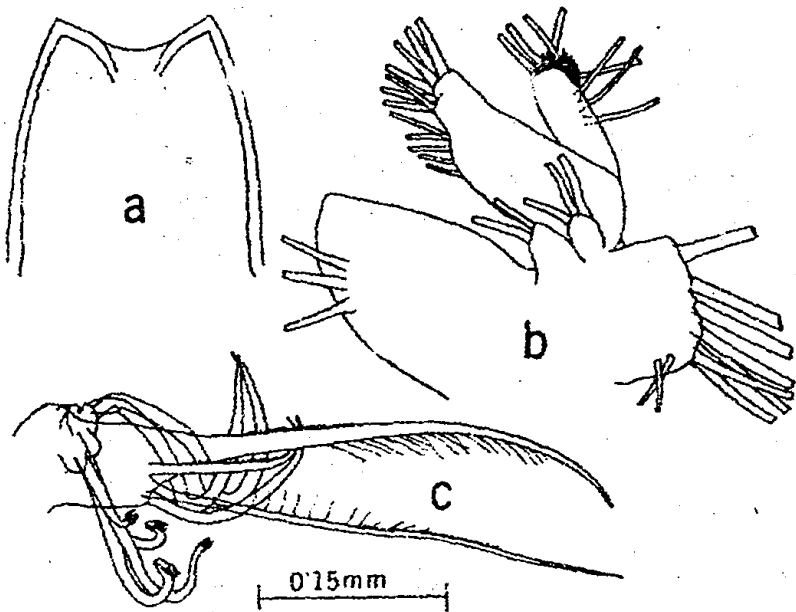


FIG. 2. *Scottocalanus securifrons*. a, rostrum ♀; b, 1st maxilla ♀; c, distal portion of 2nd maxilla ♀.

3 vermiform filaments (Fig. 2 c). Swimming legs 1-4 as shown in figures (Figs. 3 a-d).

Fifth pair of legs asymmetrical; subapical spine of left leg thicker than that of right leg. Subapical spines with two rows of teeth (Fig. 3 e).

Male: Length 4.57 mm. General appearance similar to that of female. Head with high median crest (Fig. 1 f). Last thoracic segment terminating in small spine on either side (Fig. 1 g). Abdomen 5-segmented. Posterior margin of 2nd to 4th abdominal segments with hyaline fringe (Fig. 1 g). First antenna with 20 segments when fused 8th to 12th segments, partly divided by 2 incomplete sutures between segments 8 and 9 and 11 and 12, are counted as one (Fig. 1 b). 5th leg as illustrated (Fig. 3 f-h). The small teeth on the inner margin of the proximal joint of the endopod of the left leg figured by A. Scott are not present in Tanaka's specimens, Willey's specimens or in the HIOE specimens.

DISCUSSION

The HIOE specimens agree well with descriptions of *S. securifrons* by T. Scott (1893, ♀ only), A. Scott (1909), Wolfenden (1904), and Tanaka (1961). They also appear to conform to Willey's (1918) description of *S. cuneifrons*. Willey was aware of the similarity of his *S. cuneifrons* to *S. securifrons*, and stated that he was at first inclined to identify his specimens as *S. securifrons*, but decided to establish a

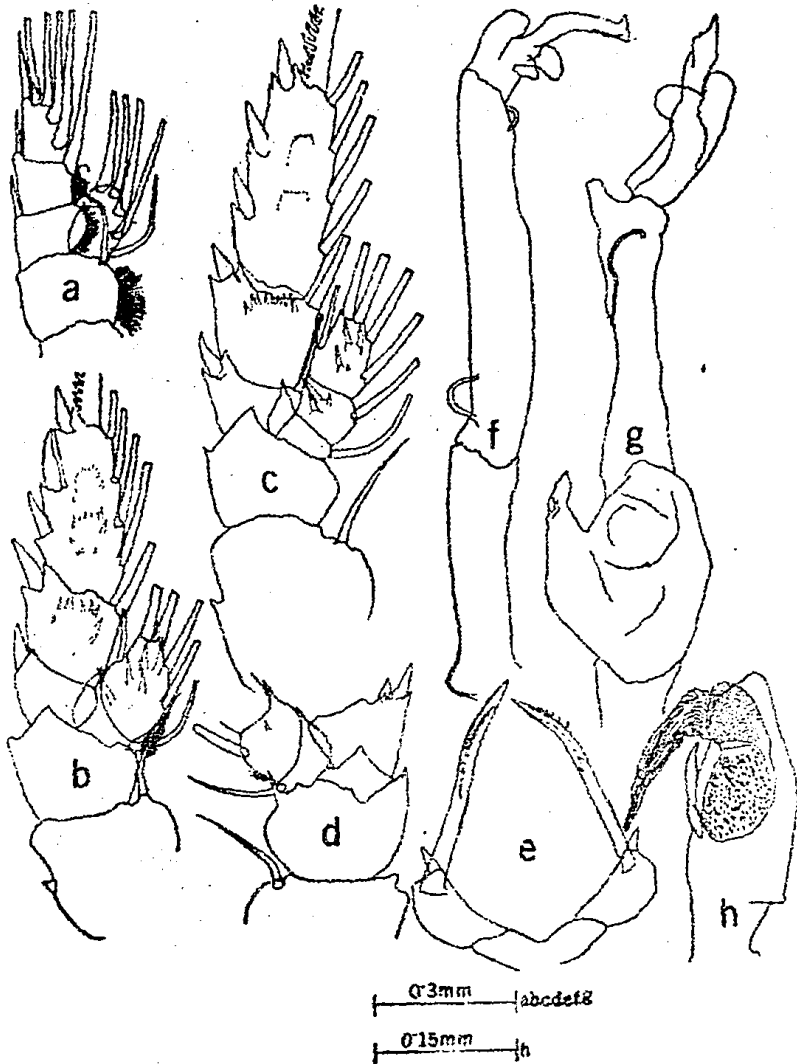


FIG. 3. *Scottocalanus securifrons*. a, 1st leg ♀; b, 2nd leg ♀; c, 3rd leg ♀; d, proximal portion of 4th leg ♀; e, 5th leg ♀; f, left 5th leg ♂; g, right 5th leg ♂; h, left 5th leg ♂, 2nd joint of Re, enlarged.

new species for them because the male fifth legs of his specimens differed from those of *S. securifrons*. Apparently he was referring to T. Scott's male, which is now believed to belong to a different species, *Scottocalanus helenae* (Lubbock), and not to the male described by A. Scott which had a fifth leg very similar to that of *S. cuneifrons*. Curiously,

Willey did not cite either T. Scott (1893) or A. Scott (1909) in his bibliography.

In order to be certain about the identity of T. Scott's specimens, I requested a loan of them from The British Museum (Natural History). Although Scott (1893) reported *S. securifrons* from 5 "Buccaneer" stations, Dr. Roger J. Lincoln reported that the British Museum had only 2 females, the male being missing. Upon examining these 2 females, I found that one of them is not *S. securifrons* but another species of *Scottocalanus*, possibly *S. australis* Farran (1936). The remaining female is herewith designated as the lectotype of *Scolecithrix securifrons* T. Scott in order to obviate further confusion.

Distribution: The species has a fairly wide distribution, and has been recorded from the Atlantic, Pacific and Indian Oceans. It has been recorded from the central and southern part of the Arabian Sea (Sewell, 1947), from the Indian Ocean off Port Shepstone, South Africa (Cleve, 1904a), from many localities in the eastern part of the Malay Archipelago (A. Scott, 1909, and Snell's Expedition), from the Philippine Islands region (Wilson, 1950), from the central equatorial Pacific, 00°03'N, 157°00'E (Grice, 1962), from the California Current region (Fleminger, 1967), from Sagami and Suruga Bays, Izu region, Japan (Tanaka, 1937, 1961) from surface waters off Three Kings Islands, New Zealand (Farran, 1929), from many localities in the West-Pacific ranging from off Peru to the Galapagos Islands region (Wilson, 1950) and from the Far Eastern and Polar Seas of the U.S.S.R. (Brodsky, 1950). The specimens described in this paper are from around the central part of the equatorial Indian Ocean (03°29'N, 77°54'E).

In the Atlantic *S. securifrons* is widely distributed over large areas, penetrating at least as far north at the Atlantic slope off Cabot Strait, 42°31'N, 63°31.5'W (Willey, 1918) and 43°18'N, 60°1'W (Rose, 1929). Also known from 47°47'–63°08'N, 8°00'–26°20'W (With, 1915; Lysholm and Nordgaard, 1921); the South coast of Iceland, 63°08'N, 21°30'W; 62°47'N, 15°03'W (Paulsen, 1909; Jespersen, 1940); the Faroe Channel, ± 60°N, 7°W (Norman, 1903; Wolfenden, 1904); 28°–58°N, 7°–50°5'W (Lysholm, Nordgaard and Wiborg, 1945); NNW of Achill Head, Ireland (Norman, 1903); 52°08'–54°33'N, 10°30'–15°53.9'W (Thompson, 1933; Farran, 1908); off the south-west coast of Ireland (Farran, 1920); 27°43'–47°43'N, 8°06'–42°40.5'W (Sars, 1925); Bermuda (Wilson, 1936); 30°08'N, 31°19'W (Sars, 1912); Florida current (Owre, 1932); between Bermuda and New York (Grice and Hart, 1932); Bay of Biscay ± 47°N, 8°W (Farran, 1926); 44°17'N, 4°38'W (Canu, 1896); 20°41'N, 31°53'W; 17°28'N, 29°42'W; 16°24'N, 28°53'W (Wolfenden, 1911); Gulf of Guinea (T. Scott, 1894); off Angola (Marques, 1956, 1958, 1959); 26°59'S, 17°05'W and 35°10'S, 2°33'W (Wolfenden, 1911). It has been captured in the northern part of the North Sea during the periodical plankton investigations, 1902–1908 (Cons. Explor. Mer 1909, Scottish area). It has been recorded from the southeastern United States between Cape Hatteras and Southern Florida (Bowman, 1971).

ACKNOWLEDGMENTS

I am grateful to Dr. N. K. Panikkar, former Director, National Institute of Oceanography, India for allowing me to take the material to the U. S. National Museum and for his interest in the progress of this study. My sincere thanks are due to Dr. Janet M. Bradford for her encouragement and to Dr. T. E. Bowman for his valuable suggestions and helpful criticism during the preparation of this paper. Thanks are also due to the U. S. National Museum for providing all facilities to pursue this work.

LITERATURE CITED

- BOWMAN, T. E. 1971. The distribution of calanoid copepods off the southeastern United States between Cape Hatteras and southern Florida. *Smithsonian Contrib. Zool.* No. 98:1-58.
- BREEMEN, I. J. VAN. 1908. VIII. Copepoden. *Nordisches Plankton* 4(8):1-263.
- BRODSKY, K. A. 1950. Calanoida of the Far Eastern Seas and Polar Basin of the U.S.S.R. Keys to the Fauna of the USSR No. 35: 1-442. (Translation: Israel Program for Scientific Translations, 1967.)
- CANU, E. 1896. Copepodes. In R. Koehler, ed. *Résultats scientifiques de la Campagne du "Caudan" dans le Golfe de Gascogne*, Fasc. 2. *Ann. Univ. Lyon* 26:421-437, pl. 18.
- CLARKE, P. T. 1904. The plankton of the South African seas. I. Copepoda. *Mar. Invest. South Africa (1902-08)*; 3:177-210, pls. 1-6.
- COMITE PERMANENT INTERNATIONAL POUR L'EXPLORATION DE LA MER. 1909. Catalogue des espèces de plantes et d'animaux observées dans le plankton recueilli pendant les expéditions périodiques depuis le mois d'août 1905 jusqu'au mois de mai 1908. *Publ. Circ. Cons. Perm. Int. Explor. Mer* No. 48:155 pp.
- . 1916. Catalogue des espèces de plantes et d'animaux observées dans le plankton recueilli pendant les expéditions périodiques depuis le mois de juillet 1908 jusqu'au mois de décembre 1911. *Publ. Circ. Cons. Perm. Int. Explor. Mer* No. 70: 87 pp.
- FARRAN, G. P. 1908. Second report on the Copepoda of the Irish Atlantic Slope. Fisheries, Ireland, *Sci. Invest.* 1908 No. 2 [1908]; 104 pp., 10 pls.
- . 1920. On the local and seasonal distribution of the pelagic Copepoda of the south-west of Ireland. *Publ. Circ. Cons. Perm. Int. Explor. Mer* No. 73:1-30.
- . 1926. Biscayan plankton collected during a cruise of H.M.S. 'Research,' 1900. Part 14. The Copepoda. *Jour. Linnean Soc. London, Zool.* 36(243):219-310, pls. 5-10.
- . 1929. Crustacea, pt. 10, Copepoda. *British Antarctic (Terra Nova) Expedition, 1910, Nat. Hist. Rep., Zool.* 8:203-306, 4 pls.

- . 1936. Copepoda. Sci. Repts. Great Barrier Reef Exped. 1928-29, 5(3):73-142.
- FLEMMING, A. 1967. Distributional atlas of calanoid copepods of the California Current region. Part II. CalCOFI Atlas No. 7:1-213.
- FRASER, J. H. AND A. SAVILLE. 1949. Plankton distribution in Scottish and adjacent waters in 1948. *Ann. Biol. (Copenhagen)* 5: 61-62.
- GIESBRECHT, W. AND O. SCHMEIL. 1898. Copepoda. I, Gymnoplea. *Das Tierreich* 6:1-169.
- GRICE, G. D. 1962. Calanoid copepods from the equatorial waters of the Pacific Ocean. *Fish. Bull. U. S. Fish Wildl. Serv.* 186, vol. 61:171-246.
- GRICE, G. D. AND ARCH D. HART. 1962. The abundance, seasonal occurrence and distribution of the epizooplankton between New York and Bermuda. *Ecol. Monogr.* 32(4):287-309.
- HEINRICH, A. K. 1958. On the feeding of copepods in the tropical region. *Dokl. Akad. Nauk SSSR.* 119(5):1028-1031 [in Russian].
- HIDA, T. AND J. E. KING. 1955. Vertical distribution of zooplankton in the central equatorial Pacific, July-August, 1952. *U. S. Fish. Wildl. Serv. Spec. Sci. Rep.—Fisheries No. 144*: 22 pp.
- JESPENSEN, P. 1940. Non-parasitic Copepoda. *Zool. Iceland* 3(33): 1-116.
- LEAVITT, B. B. 1938. The quantitative vertical distribution of macrozooplankton in the Atlantic Ocean Basin. *Biol. Bull.* 74:376-394, 5 figs.
- LYSHOLM, B. AND O. NORDGAARD. 1921. Copepoda collected on the cruise of the M.S. *Annauer Hansen* in the North Atlantic, 1913. *Bergens Mus. Aarb.* 1918-1919, Hft. 1, No. 2:1-37.
- LYSHOLM, B., O. NORDGAARD, AND K. F. WILBOG. 1945. Copepoda from the "Michael Sars" North Atlantic Deep-Sea Expedition, 1910. *Rep. Sci. Res. "Michael Sars" N. Atlantic Deep-Sea Exped. 1910*, 5(7):1-60, 1 text fig., 27 tables.
- MARQUES, E. 1956. Copépodos marinhos de Angola. *Trabalhos de Missão de Biologia marítima Campanhas em Angola. Ann. Junta Invest. Ultramar* 8, Tom. 2(2):1-30.
- . 1958. Copépodos dos mares de Angola. I. Calanoida. *Ann. Junta Invest. Ultramar* 11, Tom. 3:219-228.
- . 1959. Copépodos marinhos de Angola (2A. Campanha, 1952-53). *Mem. Junta Invest. Ultramar* (2)4:197-222.
- NORMAN, A. M. 1903. Copepoda Calanoida, chiefly abyssal, from the Farøe Channel and other parts of the North Atlantic. *Jour. Linn. Soc. London, Zool.* 29:133-141.
- OWRE, H. B. 1962. Plankton of the Florida Current. Part VIII. A list of the Copepoda. *Bull. Mar. Sci. Gulf Caribbean* 12(3): 489-495.

- OWRE, H. B. AND M. FOYO. 1967. Copepods of the Florida Current. *Faun. Caribaea*, No. 1. Crustacea, Part 1: Copepoda: 1-137.
- PARK, T. S. 1970. Calanoid Copepods from the Caribbean Sea and Gulf of Mexico. 2. New species and new records from plankton samples. *Bull. Mar. Sci.* 20(2):472-546.
- PAULSEN, O. 1909. Plankton-investigations in the waters round Iceland and in the North Atlantic in 1904. *Medd. Komm. Havundersog. ser. Plankton* 1(8):1-57, 9 figs.
- PEARSON, JOSEPH. 1906. A list of the marine Copepoda of Ireland. Part 2. Pelagic species. Fisheries, Ireland, *Sci. Invest.* 1905 No. 6 [1906]: 37 pp.
- ROSE, M. 1929. Copépodes pélagiques particulièrement de surface provenant des campagnes scientifiques de S.A.S. le Prince Albert I de Monaco. *Résult. Camp. Sci. Monaco* 78:1-126.
- . 1933. Copépodes pélagiques. *Faune de France*, vol. 26, 374 pp., 456 text-figs.
- . 1942. Les Scolecithricidae (Copépodes pélagiques) de la Baie d'Alger. *Ann. Inst. Océanogr. Monaco* 21(3):113-170, 58 text figs.
- SARS, G. O. 1905. Liste préliminaire des Calanoides recueillis pendant les campagnes de S.A.S. le Prince Albert de Monaco (2e partie). *Bull. Inst. Océanogr. Monaco* 40: 24 pp.
- . 1912. List of Crustacea from selected stations. In J. Murray and J. Hjort. *The Depths of the Ocean*, pp. 645-656.
- . 1924, 1925. Copépodes particulièrement bathypélagiques provenant des campagnes scientifiques de Prince Albert I^{er} de Monaco. *Résult. Camp. Scient. Prince Albert I, Fasc. 69*: text (1925) 408 pp.; atlas (1924) 127 pls.
- SCOTT, A. 1909. The Copepoda of the Siboga Expedition. Part I. Free-swimming, littoral and semi-parasitic Copepoda. *Siboga-Expeditie*, 17 (Monogr. 29a): 324 pp., 69 pls.
- SCOTT, T. 1893. Report on the Entomostraca from the Gulf of Guinea. *Trans. Linn. Soc. London Ser. 2*, 6(1):1-161, 15 pls.
- SEWELL, R. B. S. 1947. The free-swimming planktonic copepoda. Systematic account. *Sci. Rep. John Murray Exped. 1933-1934*, 8(1): 303 pp., 71 text figs.
- STEBBING, T. R. R. 1910. General Catalogue of South African Crustacea (Part V of S.A. Crustacea, for the Marine Investigations in South Africa). *Ann. S. African Mus.* 6:281-593, pls. 1-22.
- TANAKA, O. 1937. Copepods from the deep water of Suruga Bay. *Japanese Jour. Zool.* 7(2):251-271, pls. 17-19.
- . 1953. The pelagic Copepods of the Izu region. *Rec. Oceanogr. Works Japan*, n.s. 1(1):126-137.
- . 1961. The pelagic copepods of the Izu Region, middle Japan. Systematic account VII. Family Scolecithricidae (Part I). *Publ. Seto Mar. Biol. Lab.* 9:139-190.
- . 1969. Some calanoid copepods collected chiefly by the U.S.

- steamer Albatross from the Pacific Ocean. *Publ. Seto Mar. Biol. Lab.* 17(4):253-278.
- THOMPSON, ISAAC. 1903. Report on the Copepoda obtained by Mr. George Murray, during the cruise of "Oceana" in 1898. *Ann. Mag. Nat. Hist.* (7)12:1-36, pls. 1-7.
- VERVOORT, W. 1965. Pelagic Copepoda, Part II. Copepoda Calanoida of the families Phaennidae up to and including Acartiidae, containing the description of a new species of Aetideidae. *Atlantide Rep.* 8:9-216.
- VINOGRADOV, M. E. 1960. On the Plankton of deep water in the sea of Japan. *Zool. Zh.* 39:500-508 [In Russian].
- WIBORG, K. F. 1955. Zooplankton in relation to hydrography in the Norwegian Sea. *Fiskeridir. Skr., Ser. Havunders.* 11, 4:1-66.
- WILLEY, A. 1918. Report on the Copepoda obtained in the Gulf of St. Lawrence and adjacent waters, 1915. *Canadian Fish. Exped.*, 1914-15: 173-220.
- WILSON, C. B. 1936. Plankton of the Bermuda Oceanographic Expeditions IV. Notes on Copepoda. *Zoologica* 21:89-96.
- . 1950. Copepods gathered by the U.S. Fisheries Steamer Albatross from 1887-1909, chiefly in the Pacific Ocean. *U. S. Nat. Mus. Bull.* 100, 14(4):i-ix, 141-441, 36 pls.
- WITH, CARL. 1915. Copepoda I. Calanoida Amphiscandria. *Danish Ingolf Exped.* 3(4): 260 pp., 8 pls., 79 text figs.
- WOLFENDEN, R. N. 1904. Notes on the Copepoda of the North Atlantic Sea and the Faroe Channel. *Jour. Mar. Biol. Assoc. U.K.* n.s. 7(1):110-146.
- . 1911. Die marinen Copepoden der Deutschen Südpolar-Expedition 1901-1903. II. Die pelagischen Copepoden der Westwinddrift und des Südlichen Eismees mit beschreibung mehrer neuer Arten aus dem Atlantischen Ozean. *Deutsche Südpolar-Exped.* vol. 12, *Zool.* 4:182-380, pls. 22-40.