

Biological pretreatment and bioconversion of agricultural wastes, using ligninolytic and cellulolytic fungal consortia.

Rathinam Ramarajan¹ and Cathrine Sumathi Manohar²

Biological Oceanography Division, CSIR-National Institute of Oceanography, Dona Paula,
Goa. 403 004. INDIA.

¹ Current address: Richcore Lifesciences Pvt. Ltd., Bengaluru, Karnataka 560105. INDIA.
e-mail address : r.rathi25@gmail.com

² Corresponding author:

Address : Biological Oceanography Division, CSIR-National Institute of Oceanography, Dona Paula,
Goa. 403 004. INDIA.

Telephone : 0091 832-2450441, Fax Number : 0091-832 2450602,

e-mail address : cathrine@nio.org

running head: bioconversion of agricultural wastes using fungal consortia

Abstract

Agricultural wastes have attractive potentials as an alternate energy source. However, the major bottleneck is to identify eco-friendly treatment methodologies to utilize them. The large diversity of unexplored, novel and potential microorganisms hold a great promise and require periodic isolation and characterization of microorganisms for bioprospection. In this study, approximately a hundred fungal isolates from mangrove and coral reef habitats were tested for their lignocellulolytic enzyme activities based on plate assay, followed by quantification of enzyme activity. Of this, M2E (*Inonotus tropicalis*) and 2a (*Cerrena unicolor*) showed good growth and proficient ligninolytic activity; isolates GK1 (*Chaetomium globosum*) and GK2 (*Chaetomium brasiliense*) exhibited exceptional cellulolytic activity on lignocellulosic substrates such as rice straw and sugarcane bagasse. Consortia of the potential ligninolytic and cellulolytic isolates were set-up to determine its ability to biodegrade these lignocellulosic substrates. The efficiency of the consortia was determined based on the increase in enzyme activity; it was also evident through scanning electron microscopy, X-Ray diffraction analysis of the degraded substrates and on the sugar yield. Experiments were also carried out to compare the biological with physical pretreatment methods. The consortium of ligninolytic and cellulolytic marine-derived fungi developed in this study prove to have the potential for application in the effective utilization of agricultural wastes.

Keywords: agricultural wastes; enzymes; biological pretreatment; fungal consortia, marine.

Introduction

Annually 200 billion tons of lignocellulosic biomass is generated across the globe from agriculture, forestry, paper industries and agro-based processing units (Chandel and Singh 2011). Disposal of these wastes is an environmental concern, as they are accumulated rapidly and its natural rate of degradation is very slow. Lignocellulosic agricultural by-products such as rice straw, sugarcane bagasse and corn cobs are complex polymeric structures comprising of cellulose, hemicellulose, and lignin (Chen 2014). They have a wide range of application as raw material for the synthesis of various products such as organic acids, food additives, single cell proteins, enzymes and as feedstock for production of biofuels (Ragauskas et al. 2006; Viikari et al. 2007). The most crucial step for the utilization of lignocellulosic waste is its delignification, through pretreatment processes.

Industries follow various pretreatment methods through physical processes such as comminution, irradiation, steam explosion etc. Chemical treatment uses alkali, acid, organic solvent hydrolysis and (or) ozonolysis and various physico-chemical methods adapted by combining steam explosion with sulphur dioxide treatment, ammonia fiber explosion, carbon-di-oxide explosion, microwave assisted chemical treatment etc. Some of the several disadvantages of the physical and chemical methods are, the requirement of harsh operating conditions, energy intensive processes (Sun and Cheng 2002) and the formation of inhibitors like furans and phenolic compounds (Palmqvist and Hahn-Hägerdal 2000). Though biological methods could overcome some of these problems, their poor efficiency and treatment rates reduce its application at an industrial scale (Taherzadeh and Karimi 2008). All these drawbacks make lignocellulosic biomass a constricted energy source.

Various strategies are being developed to improve the efficiency for bioutilisation of the lignocellulosic substrates. In nature, microorganisms with their unique ecological significance survive synergistically on the same substrate. Similarly, consortiums of potential microbes are shown to be efficient in the degradation of the natural substrates in comparison with a single organism (Kausar et al. 2013; Cortes-Tolalpa et al. 2016). The lignocellulosic substrates are recalcitrant in nature and its effective biodegradation requires synergistic action of microbes, which can provide optimal combination of enzymes. Studies have also shown that the biodegradation of lignocellulosic substrates requires a complex set of enzymes which includes peroxidases, laccases, endoglucanases, exoglucanases, β -glucosidases, fucosidases and xylanases in different concentrations and proportions (Jiménez et al. 2014; Brossi et al. 2015). Interaction between the cultures forming the consortium and their synergistic enzyme activity has shown to greatly improve the biodegradation process. Use of microbial consortia can also help in overcoming the disadvantages of biological treatment; such as

improving the capacity to breakdown toxic end-products and augmenting the otherwise slow reaction processes. Studies have also shown that microbes from different ecological habitats can form consortia with high potential to efficiently bioutilise the agricultural wastes (Cortes-Tolalpa et al. 2016; Jiménez et al., 2016). In this study, we have examined the efficiency of marine derived ligninolytic and cellulolytic fungi in consortia to carry out simultaneous biological pretreatment and saccharification to release fermentable sugars.

Materials and methods

Sampling, isolation and molecular identification of fungal isolates

Fungi were isolated from mangrove sediments and coral sand using the particle plating technique (Bills and Polishook 1994). They were grouped into morphotypes, purified and maintained on microbiological media, as described in Jebaraj and Raghukumar (2009). A qualitative analysis of the fungal isolates was carried out for the lignocellulolytic enzymes by plate assay on Boyd and Kohlmeyer (BK) agar medium (Kohlmeyer and Kohlmeyer 1979). Model compounds such as guaiacol (D'Souza-Ticlo et al. 2006), carboxymethyl cellulose (CMC) and birch wood xylan (Teather and Wood 1982) were used for the assay. Potential isolates with prominent lignocellulolytic activity are deposited with National Collection of Industrial Microorganisms, Pune, India. The molecular identification of the isolates was carried out based on the partial 18S rRNA gene sequence and they are deposited in the NCBI GenBank under accession numbers KU720997 - KU721003. Isolate 2a, a known ligninolytic isolate *Cerrena unicolor* MTCC 5159, (Raghukumar et al. 1999) was also considered for the study.

Enzyme activity of isolates grown on simple liquid media

Isolates were grown in BK media for determination of Laccase, LiP and MnP enzyme activity. They were grown in Basal salt solution containing 1% birch wood xylan and CMC for estimating xylanase and CMCase activity respectively. Homogenized mycelial mats, approximately 10% (v/v) from seven day old cultures grown on BK media were used as inoculum for all the experiments. Pure cultures were incubated in the respective media for fourteen days at 28±0.5°C under static conditions. At the end of the incubation period, cultures were harvested on moisture free, pre-weighed, Whatmann Grade 1 Filter Paper (GE Healthcare, UK). The culture filtrates were collected in clean, sterile tubes for quantification of enzymes.

Enzyme activity of isolates and consortia grown on lignocellulosic substrates

Rice Straw (RS) and Sugarcane bagasse (SCB) were chosen as solid substrates for SSF. They were cut into 2-3 cm long pieces, sun dried and left in the hot air oven at 60°C for 24 hours to remove the moisture content completely. They were ground into powder and particles that passed through a

sieve of 1 mm pore size were used for the experiments. Individual isolates were grown on these substrates amended with chicken manure (CM) (80% substrate and 20% chicken manure) to attain the recommended C: N ratio (Agbogbo and Holtzapfle 2007). Each of the fungal cultures was allowed to grow on fine powdered, sterilized substrates (about 3 gm amended with CM) in 250 ml Erlenmeyer flasks and an initial moisture level in the ratio 1:4 (w/v) of the substrate was maintained. After fourteen days of growth at $28\pm 0.5^{\circ}\text{C}$ enzymatic hydrolysate containing the lignocellulolytic enzymes and fermentable sugars was collected following the protocol of Lin et al. (2011). In short, 20 mL sodium phosphate buffer (pH 7.0) per gram of the substrate was added to all the flasks and incubated in a rotary shaker for 1hr at 200 rpm. Then the cell free filtrate was collected by centrifugation at 7000 rpm for 10 min at 4°C and a final filtration through Whatmann filter paper. The treated substrates were incubated again with 40 ml of the respective filtrates and the slurry was incubated on a rotary shaker (120 rpm) at 50°C for 24 hrs. The lignocellulolytic enzyme activity and sugar concentration was estimated in the hydrolysate before and after the incubation. Uninoculated substrates were taken as negative controls and processed following the same protocol of the experimental set-ups.

The fungal isolates selected were evaluated for their interactions with each other through compatibility tests as described by Molla et al. (2001). To study the biodegradation potential of the consortia, the sterilized substrates were co-inoculated with the homogenate of both the fungal isolates of each consortium in the ratio of 1:1 and incubated. All other experimental procedures were similar to the protocol followed to determine the enzymatic activity and sugar yield by single isolates.

Comparison between physical and biological pretreatment method

Experiments were carried out to compare the biological pretreatment with physical pretreatment through mild steam explosion or autoclave treatment (AC) and microwave irradiation treatment (MW). The substrates were subjected to AC treatment at 121°C , 15 psi for 1hr and irradiated at 270 W for 10 minutes for MW pretreatment. Only the best consortium which gave the highest sugar yield on RS and SCB were considered for this study. The combined effect of biological and physical pretreatments on the sugar yield was also studied. All the procedures followed for inoculation, incubation and harvesting were the same as described earlier.

Quantitative estimation of lignocellulolytic activity

Ligninolytic enzymes Laccase (Niku-Paavola et al. 1988), LiP (Tien and Kirk 1988) MnP (Paszczyński, Crawford, and Huynh 1988) and cellulolytic enzymes CMCCase, Avicelase, FPase and xylanase were determined in the cell free culture filtrates (Ghose 1987) following standard

procedures. The enzyme units were expressed as micromole of substrate transformed per minute per liter of culture filtrate i.e. as enzyme units per liter of culture filtrate (UL^{-1}). The sugar yield was determined by dinitrosalicylic acid (DNS) method (Miller 1959). All estimates were carried out in triplicates.

Scanning electron microscopy (SEM) analysis

SEM analysis was carried out to observe the physical changes in the native untreated and treated substrates. Images of the substrates were taken using a JEOL JSM-5800 SEM at magnification 600 X. The dried samples to be analysed were mounted on a conductive carbon tape and coated with gold palladium using sputter coater (SPI-MODULE) for 140 sec at DC 47 mA and 20 kV.

X-Ray Diffraction (XRD) analysis

The change in crystallinity of the samples before and after treatment was estimated by, the XRD analysis of the substrates. Microcrystalline cellulose (Avicel PH-101) was used as a positive control. Scanning was performed on a Rigaku X-Ray diffractometer (Ultima IV) instrument set at 40 kV, 20 mA; radiation was Cu $K\alpha$ ($\lambda = 1.54 \text{ \AA}$) and a range between 5° and 40° with a step size of 0.02° . Crystallinity Index (CrI) was calculated according to the empirical method described by Segal et al. (1959) where,

$$\text{CrI} = \frac{(I_{002} - I_{AM}) \times 100}{I_{002}}$$

Where, CrI expresses the relative degree of crystallinity, I_{002} is the maximum intensity of the 002 lattice diffraction and I_{AM} is the height of the minimum between the 002 and the 101 peaks. The crystallite size was calculated from the Scherrer equation, where the width of the crystalline peak (002) at half height has been directly related to the crystallite size.

$$D(hkl) = \frac{K\lambda}{\beta_0 \cos\theta}$$

Where $D(hkl)$ is the size of crystallite in nm, K is the Scherrer constant (0.94), λ is the X-ray wavelength (0.15418 nm for Cu). β_0 is the full width at half maximum of the reflection hkl and 2θ is the corresponding Bragg angle (Oh et al. 2005).

Results and discussion

Isolation, screening and enzyme activity of isolates

Of the hundred fungal isolates screened on plate assay, seven fungal isolates GK1 (*Chaetomium globosum*) and GK2 (*Chaetomium brasiliense*) from the Gulf of Kutch region; G4 (*Engyodontium album*), G10 (*Metarhizium anisopliae*) and G13 (*Engyodontium album*) from the Grande Is. off Goa;

M155 (*Acremonium persicinum*), M158 (*Acremonium minutisporum*) from the Gulf of Mannar; M2E (*Inonotus tropicalis*) from the Goa mangrove habitats, exhibited good lignocellulolytic activity. The activity of these isolates and isolate 2a, *Cerrena unicolor* (D'Souza et al. 2009) was evaluated in the liquid culture media based on the laccase, LiP, MnP, CMCase and xylanase activity. These enzymes play a crucial role in degrading the lignocellulosic biomass to release fermentable sugars and the isolates exhibited different levels of enzyme activity (Table 1).

All the three major ligninolytic enzymes Laccase, LiP and MnP, activity was recorded only in the isolates M155, M2E and 2a. Among these isolates M2E showed very good activity of 12.2, 3.8, 37.5 UL^{-1} of Laccase, LiP and MnP respectively. LiP and MnP are the important peroxidases and were produced by nearly five isolates, but the activity of all the isolates was less than M2E. Based on the quantification of the lignin degrading enzymes of the different isolates grown on BK broth, M2E could be designated as the most potential lignin degrader (Table 1). CMCase and xylanase activity reflects the ability of the isolates to actively participate in the saccharification process of the delignified or cellulose substrates. Isolates GK1 and GK2 showed significant CMCase and xylanase activity followed by M2E. Isolate M2E which shows good activity for all the five enzymes seems to have a good potential for industrial applications (Table 1).

Enzyme activity of isolates on lignocellulosic substrates

The lignin degrading enzyme activities of M2E and 2a increased considerably when the isolates were grown on lignocellulosic substrates, RS and SCB. Laccase activity in isolates M2E and 2a increased considerably from approximately 10 and 1 UL^{-1} to 37.1 and 52.5 UL^{-1} , respectively, when they were grown on RS. A much significant increase to 383.3 and 946.4 UL^{-1} was observed when the isolates were grown on SCB (Figure 1a). A ten-fold increase in LiP activity was observed in isolates M2E and 2a on RS and there was not much increase on SCB substrate (Figure 1b). M2E showed increased MnP activity when grown on RS and SCB from 37.5 to 194.6 and 649.8 UL^{-1} respectively. However, 2a did not show any increase in MnP activity on both the substrates (Figure 1c). The isolates GK1 and GK2 were able to grow on RS and SCB (visual observation) but they did not show any quantifiable ligninolytic activity (Figure 1).

CMCase (endoglucanase), avicelase (exoglucanase) and FPase (total cellulase activity) assays were performed to understand the cellulolytic activity of the isolates. Xylanase activity in isolates is important as hemicellulose is composed of about 70% xylan. Only when the hemicellulose is broken down, the cellulose regions becomes accessible to the cellulase enzymes, which depolymerises it to pentose sugars which will then be available for the fermentation process. The four isolates studied for its cellulolytic activity on untreated lignocellulosic substrates did not show much change in their endoglucanase and exoglucanase activity (Figure 2a and 2b). Isolates GK1 and GK2 with the highest

cellulolytic activity on BSS media (Table 1) showed an increase in activity of FPase from approximately 70 to 170 UL^{-1} and < 500 to approximately 1500 UL^{-1} when they were grown on RS (Figure 2c and 2d). However, no change in activity was observed when the isolates were grown on SCB. This could be because the substrates were not pretreated and it clearly shows that delignification is crucial for efficient utilization of the substrates.

Lignocellulolytic activities of fungal isolates have an enormous potential for bio utilization of agricultural wastes as they are the major group of microorganisms capable of synthesizing enzymes to degrade these substrates (Cohen and Hadar 2001). The application of crude enzyme cocktails from a consortium is also explored for its direct application in biodegradation, as sugar loss due to consumption when whole cultures are used can be avoided (Jiménez et al. 2014). Dias et al. (2010) recorded a maximum laccase production of 0.10, MnP about 0.82, xylanase and CMCase of 0.08 and 0.15 UmL^{-1} respectively in a basidiomycetous fungi grown on wheat straw. Studies carried out using nine strains of *Phanerochaete chrysosporium* for its lignocellulolytic enzyme production on paddy straw reported CMCase activity of 0.36 – 0.42 and FPU of 0.55 – 0.88 U mL^{-1} (Mishra and Pandey Lata 2007). However, isolate 2a and M2E from this study showed a much better increase in ligninolytic activity on the substrates (Figure 1a). Based on the enzyme activity and growth characteristics, M2E and 2a were identified as ligninolytic isolates. Both belong to phylum Basidiomycota and are studied for its lignolytic activity. Though reports say that *Inonotus* sp. are difficult to be grown under laboratory conditions, M2E isolate grew luxuriantly and exhibited good enzyme activity in the experimental set up. Similarly isolates GK1 and GK2 *Chaetomium* spp. selected for their cellulolytic activity are also widely studied for their biotechnological potentials (Cohen and Hadar 2001). Fungal consortia between these potential isolates were set-up to study their bioconversion efficiency.

Enzyme activity of fungal consortia grown on lignocellulosic substrates

Consortiums were set up between the ligninolytic isolates M2E or 2a and the cellulolytic isolates GK1 or GK2. Molla et al. (2001) have defined that interactions between isolates can be categorized as mutual intermingling, partial intermingling, inhibition at contact point, inhibition at a distance and replacement. Compatibility evaluation of the isolates showed that none of the combinations showed inhibition or replacement, so all the possible combinations of consortia were selected for further studies. The interaction between M2E and GK1 clearly showed mutual intermingling and all the other combinations M2E with 2a and GK2, 2a with GK1 and GK2, GK1 with GK2 were found to be partially intermingling (Figure 1S).

The enzyme activity in a consortium is highly influenced by the extent of compatibility between the organisms. The maximum recorded laccase activity by, an individual isolate was less than 1000 UL^{-1} and increase in activity of all consortia with 2a was recorded up to 3000 UL^{-1} in the 2a +GK2 set up (Figure 3a). None of the other consortia showed any increase in the Laccase activity and there was no increase in LiP and MnP activity in any of the consortia (Figure 3b and c). Increase in CMCase and Avicelase activity was observed in consortiums comprising of ligninolytic (M2E and 2a) and cellulolytic (GK1 and GK2) isolates (Figure 4a and b) in comparison with the activity of individual isolates. All the consortia showed increase in FPase and xylanase activity (Figure 4c and d).

Comparison of sugar yield by single isolates and consortia from lignocellulosic substrates

The sugar concentration yielded from RS and SCB when treated with individual isolates was less than 1 gL^{-1} , except GK2 which yielded the highest sugar concentration of 1.35 gL^{-1} from SCB (Table 2). There was a marginal increase in the sugar yield from all the consortia in comparison with the single isolates. Among the different consortia, M2E+GK2 gave the maximum sugar yield of 4.39 gL^{-1} on SCB followed by 2a+GK2 which yielded 2.64 gL^{-1} on RS (Table 2).

SEM analysis

SEM images of the untreated and treated substrates with single isolates and the best consortia for each substrate, gave evidence of the physical changes that occurred during the treatment (Figure 5). In case of untreated RS, the structures appear smooth and the ordered arrangements can be observed on the surface (Figure 5a). But the rice straw treated by M2E (Figure 5b) and 2a (Figure 5c) shows disrupted surfaces and of flaking out. The rice straw treated by GK1 (Figure 5d) and GK2 (Figure 5e) did not show much change except for some uneven and worn out structures. Maximum disruption of the RS can be seen in the substrates treated by the consortium 2a+GK2 (Figure 5f) as compared to the single isolates. Similarly, untreated SCB has smooth and continuous surfaces, the external fibers are loosened during the treatment with M2E and 2a, minor disruptions by GK1 and GK2 are also evident and intense flaking caused by the best consortia M2E+GK2 is reflected from the SEM images (Figure 5g - l).

XRD analysis

Cellulose in natural substrates is highly complex as there are transition regions known as paracrystalline cellulose between crystalline and amorphous structures (Larson, Wickholm, and Iversen 1997). The amorphous forms are readily degraded compared to the crystalline components. It is also possible that the amorphous region is buried in the interior that is tightly packed by neighboring crystallites making it sufficiently impenetrable to the enzymes. In such cases, the enzymes target the crystallites and break them down (Park et al. 2010).

The crystallinity index (CrI) and crystallite size (nm) from the XRD spectra was analysed for the untreated and treated samples (Segal et al. 1959). The peak height of the XRD spectrum was measured to calculate the CrI, which reduced from 56.6 to 42.52 % in RS treated with 2a+GK2 consortia and SCB CrI reduced from 49.02 to 42.92 % following treatment by M2E+GK2 consortia (Table 3). Avicel tested as a positive control, showed the highest CrI of 80.6% due to its microcrystalline structure. The crystallite size of untreated RS and SCB was in the size range of 0.9266 nm and 0.8345 nm respectively. The crystallite sizes of treated RS and SCB reduced and it could be confirmed by the decrease in CrI, which is associated with the reduction of crystalline domains or increase of the amorphous domains (Poletto, Heitor, and Zattera 2014). The decrease in the CrI and crystallite size could be because the crystalline cellulose was converted to a less ordered amorphous form and its accumulation was also reflected in the broadening of the peak in the XRD spectrum.

The reduction in the crystallinity of cellulose in the substrate is one of the crucial steps known to significantly affect hydrolysis. The X-Ray diffraction profile of the treated substrates shows that the crystallinity indices and crystallite size were reduced and converted to amorphous regions (Table 3). The isolates employed in this study prove to be efficient in the biodegradation of lignocellulosic substrates. Optimization of this process would further increase its efficiency thus making it an economically applicable method on industrial scales.

Comparative analysis of biological and physical pre-treatment

It was observed that consortiums formed from efficient ligninolytic and cellulolytic fungi could enhance the final sugar yield obtained without the requirement of any other additional pretreatment methods. Experiment were also carried out to compare the biological with physical pretreatment methods; the combined effect of biological and physical pretreatment to increase the sugar yield was also tested. The sugar yield by GK2, when grown on RS, without any pretreatment was only 0.42 gL⁻¹ and in the two different physical pretreatments the sugar yield increased to 1.03 and 0.72 gL⁻¹. The same isolate, when grown on SCB, without pretreatment the sugar yield was 1.35 gL⁻¹ and following physical pretreatment it yielded 1.64 and 1.44 gL⁻¹ (Table 4). The biological pretreatment by the two ligninolytic isolates M2E and 2a showed very good activity and the maximum sugar concentration of 2.64 and 4.39 gL⁻¹ from RS and SCB respectively was obtained. High MnP activity by M2E+GK2 consortium on SCB and increased laccase activity of 2a+GK2 on RS followed by good cellulolytic of these consortia (Figure S2 and S3) could be the main reason for the increased sugar yield from the substrates. Though the physical pretreatment and the combination of physical and biological pretreatment was able to moderately increase the sugar yield from the substrates, it was less than

those obtained through biological pretreatment using the developed consortia. These results clearly demonstrate that potential fungal isolates can be used for biological pretreatment and effective bioutilization of lignocellulosic substrates.

Pensupa et al. (2013) compared the glucose concentration in the hydrolysate obtained by the hydrolysis of the fermented wheat straw using the fungal culture filtrate and the commercial cellulase Ctec2. The former gave 4.34 and the latter gave 3.13 mg mL⁻¹ of glucose respectively. These results were comparable to the maximum sugar concentration of 2.64 and 4.39 gL⁻¹ obtained by the enzymatic hydrolysate of RS by 2a+GK2 and SCB by M2E+GK2 respectively (Table 3). Studies show that physical treatment such as microwave irradiation can enhance the saccharification process (Binod et al. 2012). In our results, the physical pretreatment and combination of physical and biological pretreatment were able to moderately increase the sugar yield from the substrates, but the maximum sugar yield was obtained through biological pretreatment in two of the best developed consortia (Table 4). In the present work, we have shown that the use of consortia between ligninolytic and cellulolytic fungi could efficiently enhance the degradation of rice straw and sugarcane bagasse.

Conclusion

A consolidated bioprocessing technique, which combines enzyme production, saccharification, and fermentation, is gaining recognition. The simultaneous biological pretreatment and saccharification process tested in this study using a consortium of ligninolytic and cellulolytic marine derived fungi proves to have potential for effective utilization of agricultural wastes. The maximum sugar concentration of the enzymatic hydrolysate obtained was 2.64 mg/ml from RS by 2a+GK2 and 4.39 mg/ml from SCB by M2E+GK2. This was considerably higher than the results obtained for any individual isolate studied. It was also observed that autoclave and microwave treatment under specified employed conditions could not enhance the sugar concentration obtained by biological pretreatment and saccharification using the most efficient consortia. Also, the effect of these physical pretreatments alone could not give similar results to biological pretreatments. This shows that microbial consortia of potential isolates can be utilized for effective biodegradation of lignocellulosic substrates. Identification of such potential isolates from natural habitats is an ongoing process and is required to develop a sustainable, efficient and economically feasible technology.

Acknowledgments

The authors would like to thank Mr. Ram Murti Meena, Mr. Areef Sardar and Mr. Girish Prabhu, CSIR-NIO for technical support during Sequencing, SEM and XRD analysis. Ms. Rathinam Ramarajan would like to thank the Director, CSIR-NIO and Head, BOD, CSIR-NIO for granting her

required permissions to carry out the work as a part of her M. Tech dissertation work in Industrial Biotechnology at National Institute of Technology Karnataka, Surathkal. This study was funded by Council of Scientific and Industrial Research grant PSC0206. This is NIO's contribution number xxx.

References

- Agbogbo, F. K., and M. T. Holtzapfle. 2007. Fixed-bed fermentation of rice straw and chicken manure using a mixed culture of marine mesophilic microorganisms. *Bioresour. Technol.* 98: 1586–1595. doi:10.1016/j.biortech.2006.06.021.
- Bills, G. F., and J. D. Polishook. 1994. Abundance and diversity of microfungi in leaf litter of a lowland rain forest in Costa Rica. *Mycologia* 86: 187–198. doi: 10.2307/376 0635.
- Binod, P., K. Satyanagalakshmi, R. Sindhu, U. K. Janu, R. K. Sukumaran, and A. Pandey. 2012. Short duration microwave assisted pretreatment enhances the enzymatic saccharification and fermentable sugar yield from sugarcane bagasse. *Renew. Energ.* 37: 109–116. doi:10.1016/j.renene.2011.06.007.
- Brossi, M. J. L, Jiménez, L. Cortes-Tolalpa, J. D. van Elsas. 2016. Soil-derived microbial consortia enriched with different plant biomass reveal distinct players acting in lignocellulose degradation. *Microb. Ecol.* 71(3):616-27. doi: 10.1007/s00248-015-0683-7.
- Chandel, A. K., and O. V. Singh. 2011. Weedy lignocellulosic feedstock and microbial metabolic engineering: advancing the generation of 'Biofuel'. *Appl. Microbiol. Biotechnol.* 89: 1289–1303. doi: 10.1007/s00253-010-3057-6.
- Chen, H. 2014. Chemical Composition and Structure of Natural Lignocellulose. In *Biotechnology of Lignocellulose*, ed. H. Chen, 25–71. Netherlands: Springer.
- Cohen, R., and Y. Hadar. 2001. The roles of fungi in agricultural waste conversion in Fungi. In *Bioremediation*, ed. G. M. Gadd, 305–334. New York: Cambridge University Press.
- Cortes-Tolalpa, L., D. J. Jiménez, M. J. L. Brossi, J. Falcao-Salles, J. D. van Elsas. 2016. Different inocula produce distinctive microbial consortia with similar lignocellulose degradation capacity. *Appl. Microbiol. Biotechnol.* 100 (17) : 7713 – 7725. doi: 10.1007/s00253-016-7516-6.
- D'Souza-Ticlo, D. Sharma and C. Raghukumar. 2009. A thermostable metal-tolerant laccase with bioremediation potential from a marine-derived fungus. *Mar. Biotechnol.* 11(6): 725-737. doi:10.1007/s10126-009-9187-0.
- D'Souza-Ticlo, D., R. Tiwari, A. K. Sah, and C. Raghukumar. 2006. Enhanced production of laccase by a marine fungus during treatment of colored effluents and synthetic dyes. *Enzyme Microb. Tech.* 38: 504–511. doi:10.1016/j. enz mictec.2005.07.005.
- Dias, A. A., G. S. Freitas, G. S. Marques, A. Sampaio, I. S. Fraga, M. A. Rodrigues, D. V. Evtuguin, and R. M. Bezerra. 2010. Enzymatic saccharification of biologically pre-treated wheat straw with white-rot fungi. *Bioresour. Technol.* 101: 6045–6050. doi: 10.1016/j.biortech.2010.02.110.

- Ghose, T., 1987. Measurement of cellulase activities. *Pure Appl. Chem.* 59: 257–268. <http://dx.doi.org/10.1351/pac198759020257>.
- Jebaraj, C. S., and C. Raghukumar. 2009. Anaerobic denitrification in fungi from the coastal marine sediments off Goa, India. *Mycol. Res.* 113: 100–109. doi:10.1016/j.mycres.2008.08.009.
- Jiménez, D. J., F. Dini-Andreote, and J. D. van Elsas. 2014. Metataxonomic profiling and prediction of functional behaviour of wheat straw degrading microbial consortia. *Biotechnol. Biofuels.* 7:92. doi: 10.1186/1754-6834-7-92.
- Jiménez, D. J., M. J. L. Brossi, J. Schückel, S. K. Kračun, W. G. T. Willats, J. D. van Elsas. 2016. Characterization of three plant biomass-degrading microbial consortia by metagenomics- and metasecretomics-based approaches. *Appl. Microbiol. Biotechnol.* doi:10.1007/s00253-016-7713-3.
- Kausar, H., M. R. Ismail, H. M. Saud, R. Othman, and S. Habib. 2013. Use of lignocellulolytic microbial consortium and pH amendment on composting efficacy of rice straw. *Compost Sci. Util.* 21: 121–133. doi: 10.1080/1065657X.2013.842131.
- Kohlmeyer, J., and E. Kohlmeyer. 1979. *Marine Mycology*. Academic Press, New York.
- Larson, P. T., K. Wickholm, and T. Iversen. 1997. A CP/MAS ¹³C NMR investigation of molecular ordering in celluloses. *Carbohydr. Res.* 302:19–25. doi:10.1016/S0008-6215(97)00130-4.
- Lin, H., B. Wang, R. Zhuang, Q. Zhou, and Y. Zhao. 2011. Artificial construction and characterization of a fungal consortium that produces cellulolytic enzyme system with strong wheat straw saccharification. *Bioresour. Technol.* 102: 10569–10576. doi:10.1016/j.biortech.2011.08.095.
- Miller, G. L. 1959. Use of dinitrosalicylic acid reagent for determination of reducing sugar. *Anal. Chem.* 31: 426–428. doi: 10.1021/ac60147a030.
- Mishra, B. and A. K. Pandey Lata. 2007. Lignocellulolytic enzyme production from submerged fermentation of paddy straw. *Indian J. of Microbiol.* 47: 176–179. doi: 10.1007/s12088-007-0034-6.
- Molla, A. H., A. Fakhru'l-Razi, S. Abd-Aziz, M. M. Hanafi, and M. Z. Alam. 2001. In-vitro compatibility evaluation of fungal mixed culture for bioconversion of domestic wastewater sludge. *World J. Microbiol. Biotechnol.* 17: 849–856. doi: 10.1023/A:1013844306960.
- Niku-Paavola, M.-L., E. Karhunen, P. Salola, and V. Raunio. V. 1988. Ligninolytic enzymes of the white-rot fungus *Phlebia radiata*. *Biochem. J.* 254: 877–884. PMID: PMC1135164.
- Oh, S.Y., D. I. Yoo, Y. Shin, H. C. Kim, H. Y. Kim, Y. S. Chung, W. H. Park, and J. H. Youk. 2005. Crystalline structure analysis of cellulose treated with sodium hydroxide and carbon dioxide by means of X-ray diffraction and FTIR spectroscopy. *Carbohydr. Res.* 340: 2376–2391. doi:10.1016/j.carres.2005.08.007.
- Palmqvist, E., and B. Hahn-Hägerdal. 2000. Fermentation of lignocellulosic hydrolysates. I: inhibition and detoxification. *Bioresour. Technol.* 74: 17–24. doi:10.1016/S0960-8524(99)00160-1.

- Park, S., J. O. Baker, M. E. Himmel, P. A. Parilla, and D. K. Johnson. 2010. Research cellulose crystallinity index: measurement techniques and their impact on interpreting cellulase performance. *Biotechnol. Biofuels* 3:10. doi: 10.1186/1754-6834-3-10.
- Paszczyński, A., R. L. Crawford, and V. B. Huynh. 1988. Manganese peroxidase of *Phanerochaete chrysosporium* : Purification. *Methods Enzymol.*161: 264–270. doi: 10.1016/0076-6879(88)61028-7.
- Pensupa, N., M. Jin, M. Kokolski, D. B. Archer, and C. Du. 2013. A solid state fungal fermentation-based strategy for the hydrolysis of wheat straw. *Bioresour. Technol.* 149: 261–267. doi: 10.1016/j.biortech.2013.09.061.
- Poletto, M., L. Heitor, and A. J. Zattera. 2014. Native Cellulose: Structure, Characterization and Thermal Properties. *Materials* 7: 6105–6119. doi:10.3390/ma7096105.
- Ragauskas, A. J., C. K. Williams, B. H. Davison, G. Britovsek, J. Cairney, C. A. Eckert, W. J. Frederick Jr, J. P. Hallett, D. J. Leak, C. L. Liotta, J. R. Mielenz, R. Murphy, R. Templer, and T. Tschaplinski. 2006. The path forward for biofuels and biomaterials. *Science* 311: 484–489. doi: 10.1126/science.1114736.
- Raghukumar, C., T. M. DeSouza, R. G. Thorn, and C. A. Reddy. 1999. Lignin-modifying enzymes of *Flavodon flavus*, a basidiomycete isolated from a coastal marine environment. *Appl. Environ. Microbiol.* 65: 2103-2111. URL: [http:// aem.Asm. org/content/65/5/2103.full](http://aem.asm.org/content/65/5/2103.full).
- Segal, L., J. Creely, A. Martin, and C. Conrad. 1959. An empirical method for estimating the degree of crystallinity of native cellulose using the X-ray diffractometer. *Tex. Res. J.* 29: 786-794. doi: 10.1177/004051755902901003.
- Sun, Y., and J. Cheng. 2002. Hydrolysis of lignocellulosic materials for ethanol production: a review. *Bioresour. Technol.* 83: 1-11. doi:10.1016/S0960-8524(01)00212-7.
- Taherzadeh, M. J., and K. Karimi. 2008. Pretreatment of lignocellulosic wastes to improve ethanol and biogas production: a review. *Int. J. Mol. Sci.*9: 1621-1651. doi:10. 3390 /ijms 9091621.
- Teather, R. M., and P. J. Wood. 1982. Use of Congo red-polysaccharide interactions in enumeration and characterization of cellulolytic bacteria from the bovine rumen. *Appl. Environ. Microbiol.* 43: 777-780. PMID: PMC241917.
- Tien, M., and T. K. Kirk. 1988. Lignin peroxidase of *Phanerochaete chrysosporium*. *Methods Enzymol.* 161: 238-249. doi: 10.1016/0076-6879(88)61025-1.
- Viikari, L., M. Alapuranen, T. Puranen, J. Vehmaanperä, and M. Siika-Aho. 2007. Thermostable enzymes in lignocellulose hydrolysis. In *Biofuels*, 121-145. Heidelberg, Berlin: Springer.

Figure legends

Figure 1. Ligninolytic enzymes Laccase (a) LiP (b) and MnP (c) activity of four selected isolates grown on plain BK media (black), rice straw (grey) and sugarcane bagasse (white).

Figure 2. Cellulolytic enzymes CMCase (a), Avicelase (b), FPase (c) and Xylanase (d) activity of four selected isolates grown on basal salt solution containing the respective substrates (black), on rice straw (grey) and sugarcane bagasse (white).

Figure 3. Ligninolytic enzymes Laccase (a), LiP (b) and MnP (c) activity of consortia on rice straw (grey) and sugarcane bagasse (white).

Figure 4. Cellulolytic enzymes CMCase (a), Avicelase (b), FPase (c) and Xylanase (d) activity of consortia on rice straw (grey) and sugarcane bagasse (white).

Figure 5. Scanning electron microscopy images of untreated rice straw (a), rice straw treated by M2E (b), 2a (c), GK1 (d), GK2 (e), 2a + GK2 (f) untreated sugarcane bagasse (g), sugarcane bagasse treated by M2E (h), 2a (i), GK1 (j) , GK2 (k) , M2E + GK2 (l) Scale measures 50 μ .

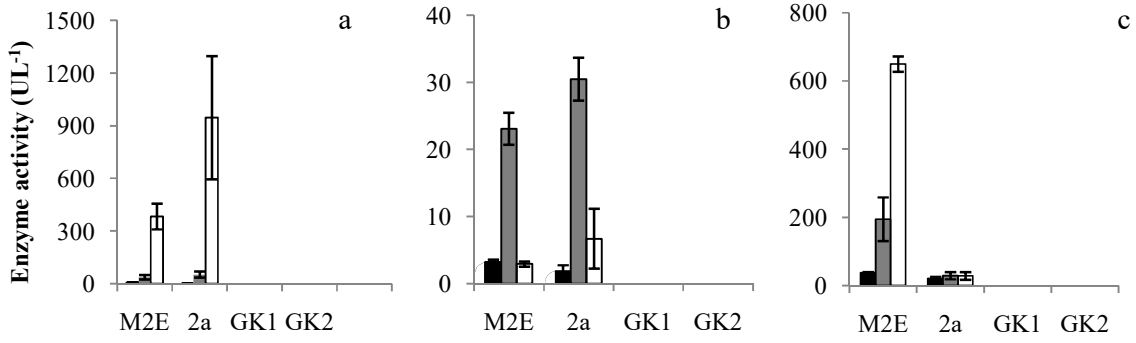


Figure 1

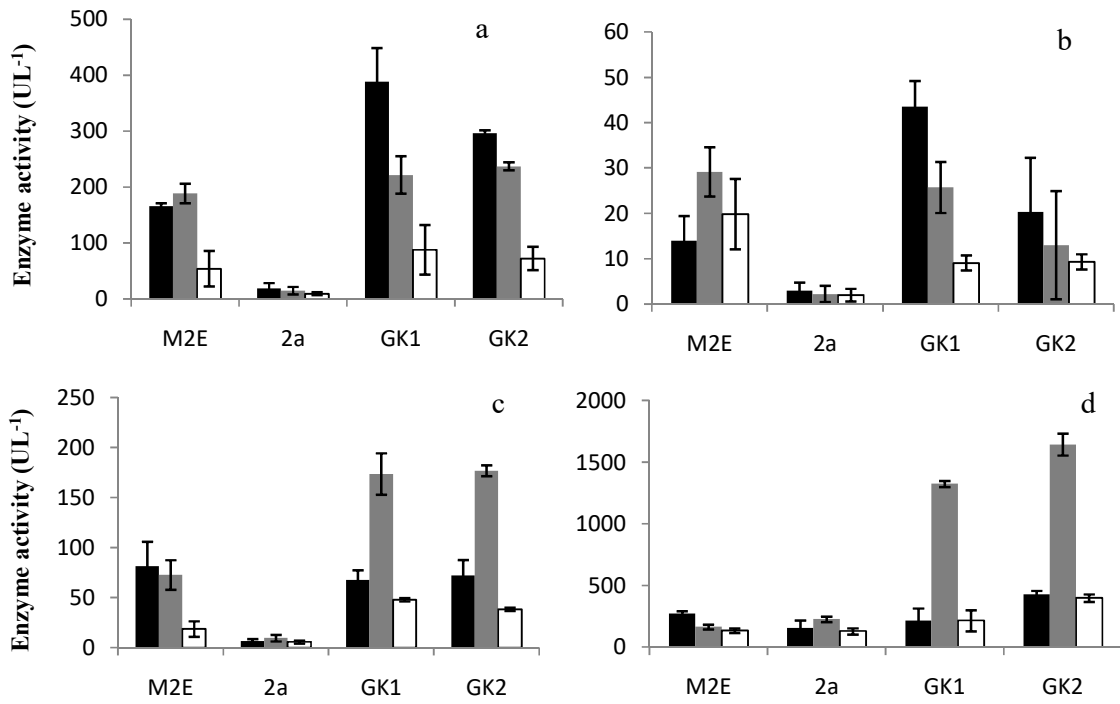


Figure 2

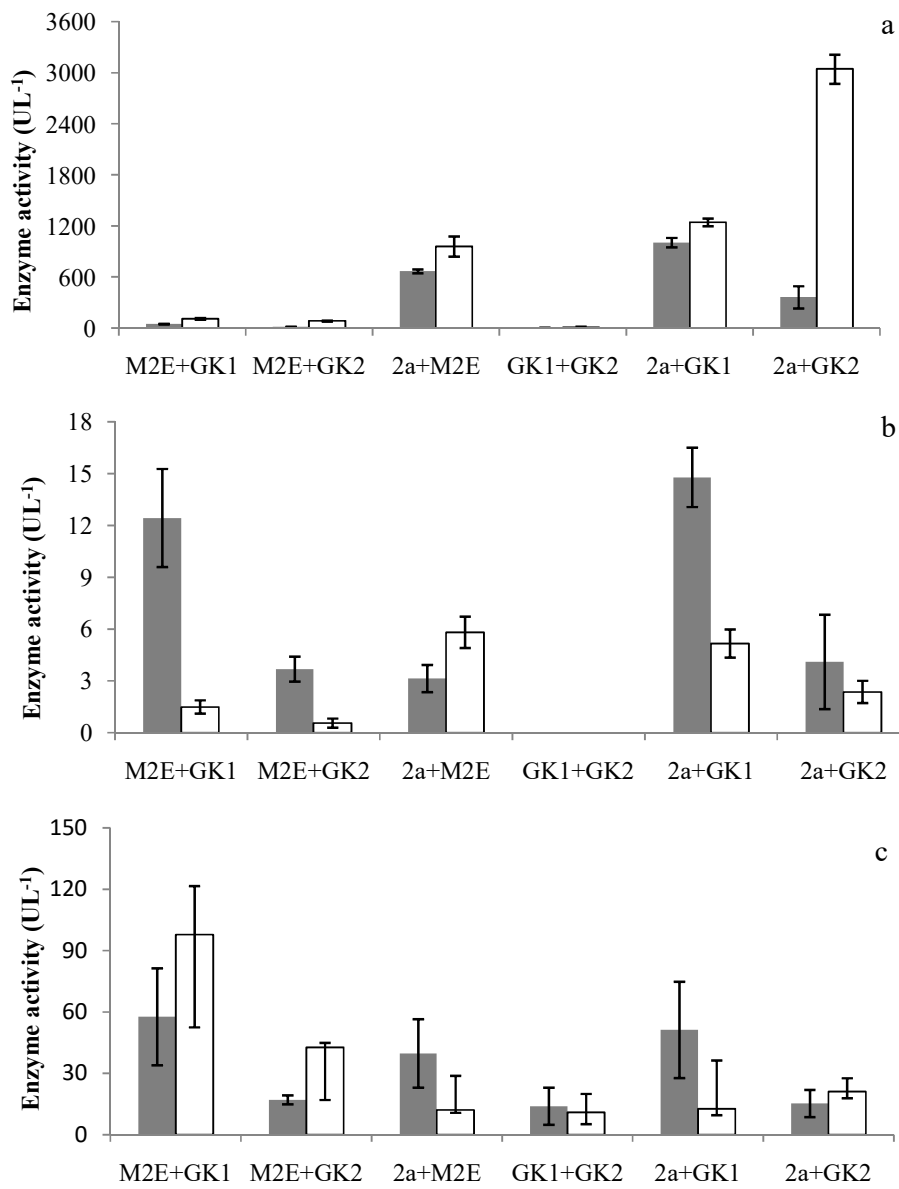


Figure 3

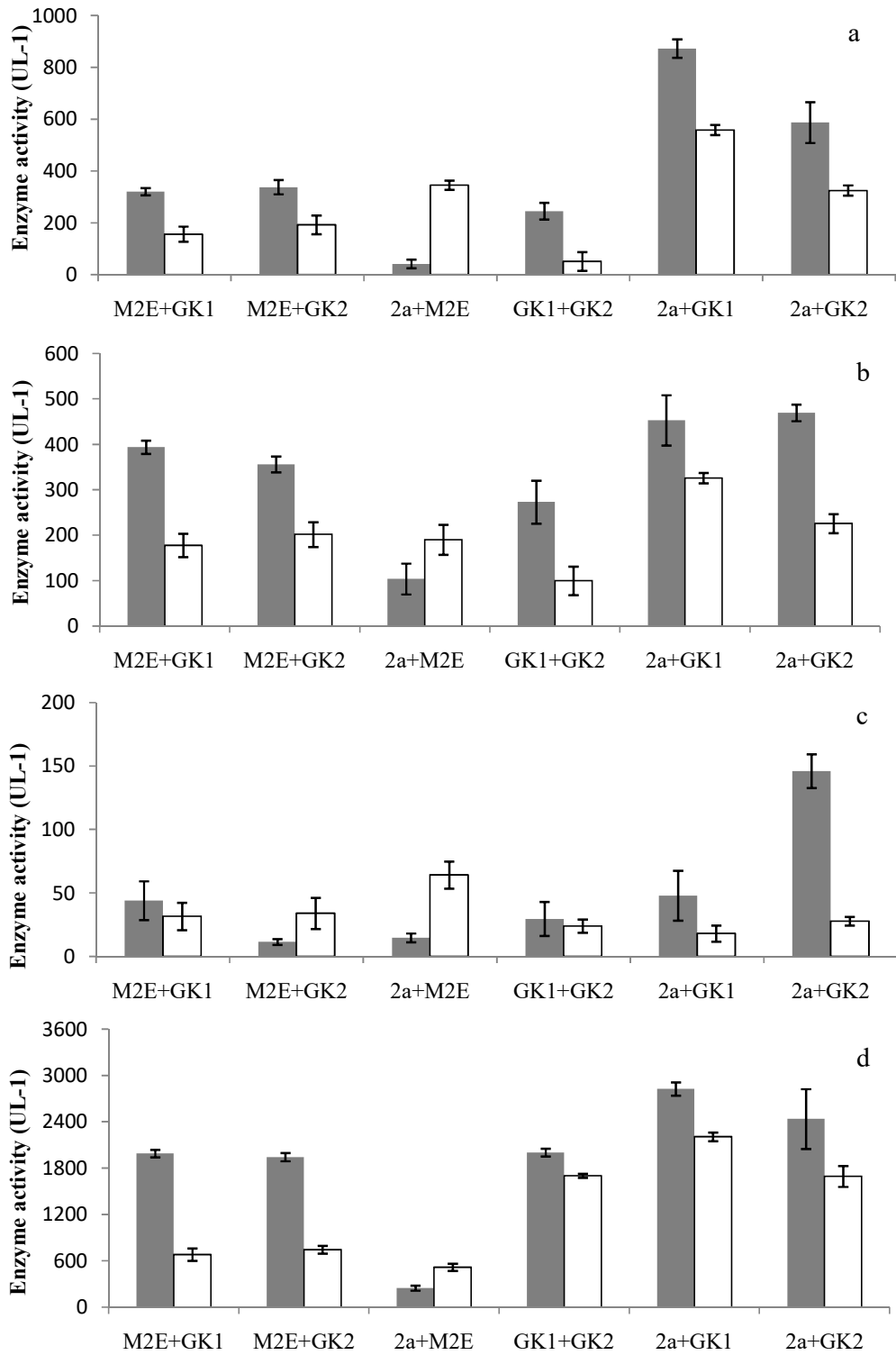


Figure 4

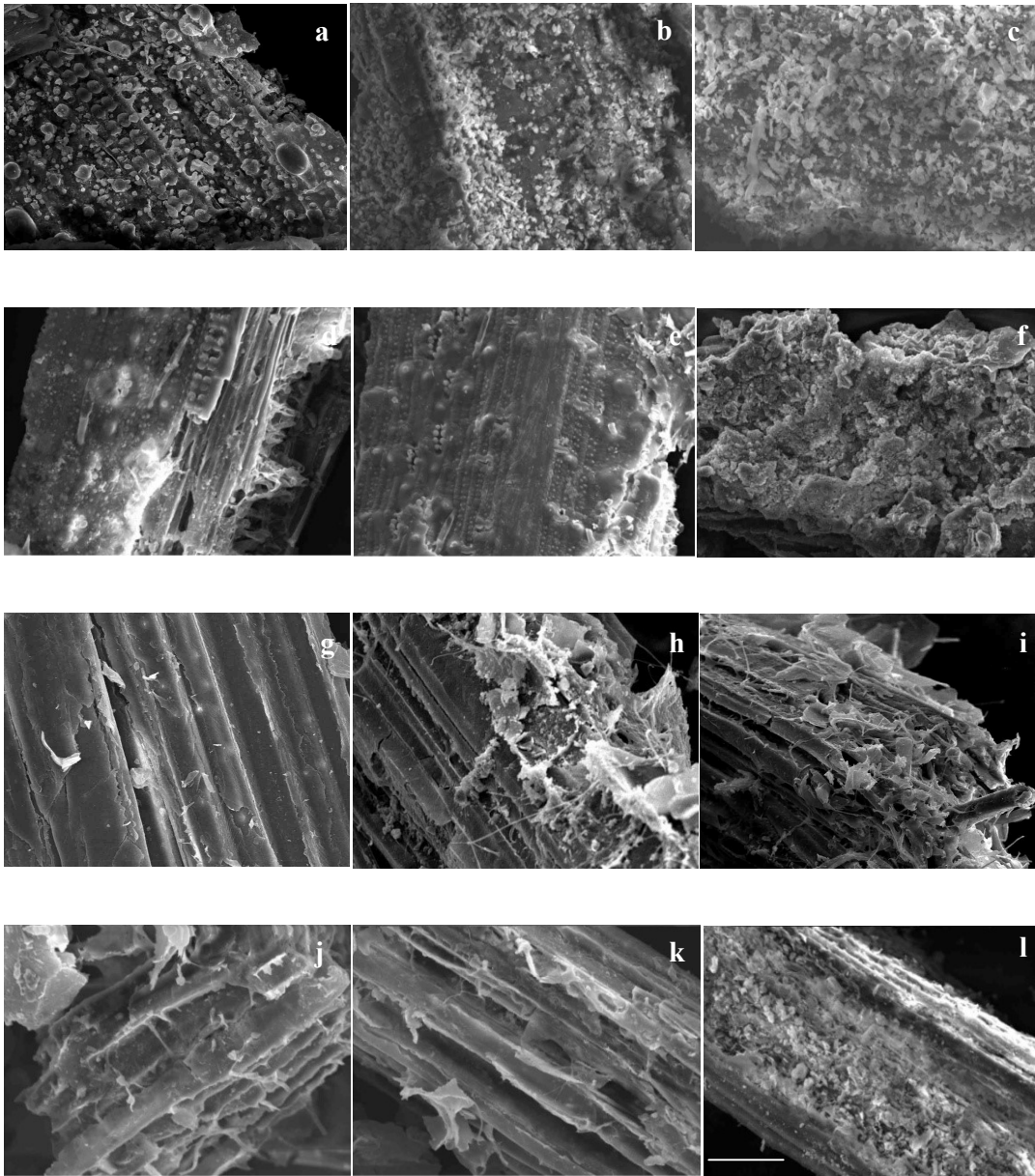


Figure 5

Table 1. Lignocellulolytic enzyme activity (UL^{-1}) of the fungal isolates

Media	BK			BSS-C	BSS-X
Enzyme activity (UL^{-1})	Laccase	LiP	MnP	CMCase	Xylanase
GK1	ND	ND	ND	400.7 (41.6)	277.3 (54.1)
GK2	ND	ND	ND	270.9 (20.3)	403.4 (16.9)
G4	ND	2.2 (0.1)	ND	15.4 (4.3)	59.3 (29.6)
G10	ND	2.0 (0.3)	ND	11.6 (3.1)	57.7 (4.6)
G13	ND	0.4 (0.1)	2.1 (0.6)	35.4 (12.3)	77.5 (27.6)
M155	0.1 (0.0)	0.2 (0.0)	2.4 (0.7)	51.0 (13.8)	122.7 (39.5)
M158	ND	0.2 (0.1)	3.0 (3.1)	17.4 (6.4)	48.6 (22.2)
M2E	12.2 (1.0)	3.8 (0.3)	37.5 (1.9)	161.5 (21.9)	238.5 (53.2)
2a	0.4 (0.0)	1.4 (0.8)	25.6 (2.3)	17.9 (9.5)	102.0 (16.4)

Note: Standard deviation values of the triplicates are given within parenthesis,
BK: Boyd and Kohlmeyer media, BSS-C and BSS-X: Basal salt solution with carboxymethyl cellulose and birch wood xylan respectively; ND: Not detectable under employed assay conditions

Table 2. Sugar yield (gL^{-1}) from rice straw and sugarcane bagasse hydrolysate

Substrate	Rice Straw		Sugar cane bagasse	
	0 hours	24 hours	0 hours	24 hours
Isolates / Consortia				
GK1	0.41 (0.07)	0.46 (0.11)	0.55 (0.06)	0.68 (0.12)
GK2	0.28 (0.09)	0.42 (0.05)	0.60 (0.28)	1.35 (0.53)
M2E	0.46 (0.05)	0.57 (0.14)	0.18 (0.08)	0.53 (0.07)
2a	0.09 (0.05)	0.20 (0.07)	0.72 (0.06)	0.73 (0.09)
M2E+GK1	0.52 (0.17)	0.61 (0.08)	0.7 (0.09)	1.47 (0.42)
M2E+GK2	0.51 (0.13)	1.09 (0.27)	1.15 (0.22)	4.39 (0.18)
2a+GK1	0.26 (0.04)	0.83 (0.05)	0.12 (0.04)	0.65 (0.07)
2a+GK2	0.15 (0.04)	2.64 (0.17)	0.1 (0.04)	0.89 (0.07)
M2E+2a	0.1 (0.06)	0.12 (0.04)	0.39 (0.10)	0.41 (0.10)
GK1+GK2	0.61 (0.09)	0.88 (0.12)	0.93 (0.07)	2.37 (0.16)
Negative Control*	0.18 (0.14)	0.23 (0.13)	0.29 (0.06)	0.31 (0.06)

*Without inoculum

Table 3. Crystallinity index and crystallite size of samples which yielded the maximum sugar content

Substrates	Crystallinity Index (%)	Crystallite size (nm)
Untreated rice straw	56.56	0.9266
Rice straw treated with 2a+GK2	42.52	0.7178
Untreated Sugar cane bagasse	49.02	0.8345
Sugar cane bagasse treated with M2E+GK2	42.92	0.7176
Avicel (positive control)	80.61	4.3653

Table 4. Comparison of sugar yield (gL^{-1}) from the rice straw and sugarcane bagasse hydrolysate using different pre-treatment techniques

Substrate	Rice Straw		Sugarcane Bagasse	
	0 hours	24 hours	0 hours	24 hours
Biological pre-treatment				
GK2	0.28 (0.09)	0.42 (0.05)	0.60 (0.28)	1.35 (0.53)
M2E+GK2	0.51 (0.13)	1.09 (0.27)	1.15 (0.22)	4.39 (0.18)
2a+GK2	0.15 (0.04)	2.64 (0.17)	0.1 (0.04)	0.89 (0.07)
Autoclave pre-treatment				
GK2	1.16 (0.16)	1.03 (0.10)	1.45 (0.16)	1.64 (0.07)
M2E+GK2	0.69 (0.09)	0.85 (0.14)	1.09 (0.08)	1.24 (0.22)
2a+GK2	0.36 (0.15)	0.58 (0.11)	0.48 (0.11)	0.66 (0.10)
Microwave pre-treatment				
GK2	0.69 (0.26)	0.72 (0.59)	1.39 (0.11)	1.44 (0.17)
M2E+GK2	0.59 (0.19)	0.91 (0.14)	1.12 (0.08)	3.76 (1.46)
2a+GK2	0.40 (0.11)	0.50 (0.14)	0.50 (0.03)	0.62 (0.08)

Supplementary Information

Figure 1S. Interactions between different fungal isolates M2E and GK1 (a), M2E and GK2 (b), 2a and GK1 (c), 2a and GK2 (d), M2E and 2a (e), GK1 and GK2 (f) during compatibility test

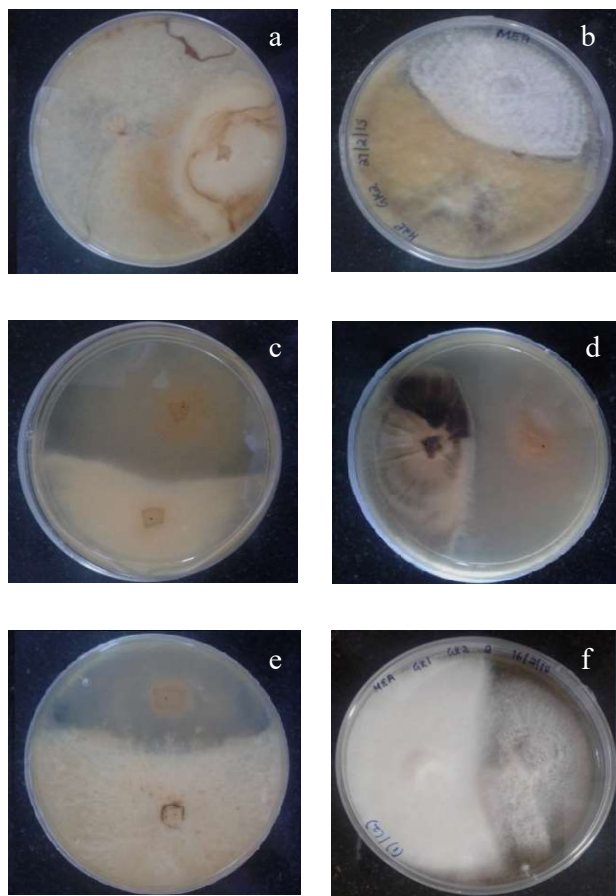
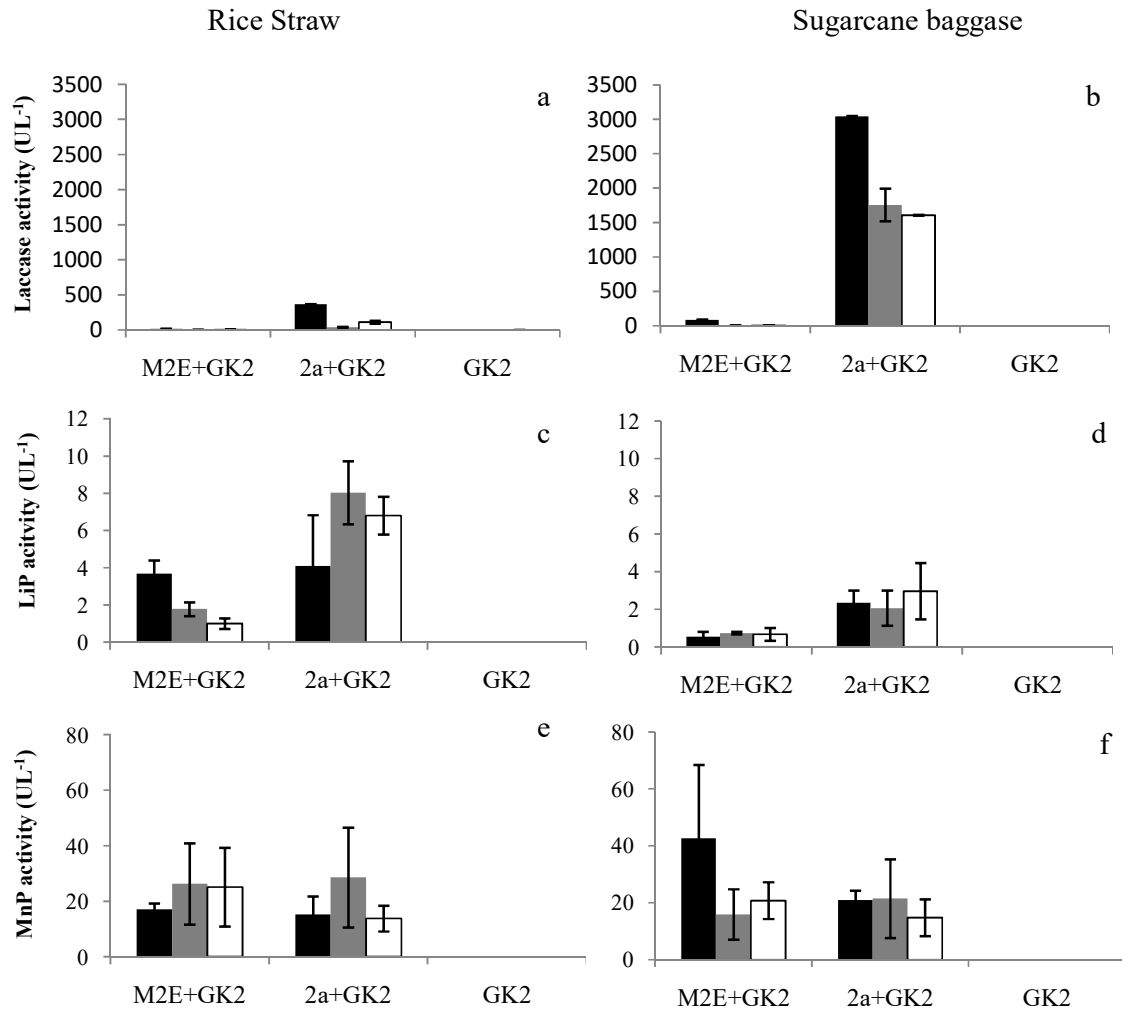


Figure 2S. Activity of lignolytic enzymes: Laccase (a, b), LiP (c, d) and MnP (e, f) through biological (black), autoclave (grey) and microwave (white) treatment of rice straw and sugarcane bagasse.



Xylanase (g, h) through biological (black), autoclave (grey) and microwave (white) treatment of rice straw and sugarcane bagasse.

