

LOW LIGHT PHYTOPLANKTON GENERA OBSERVED IN THE COASTAL AND ESTUARINE WATERS OF GOA, INDIA

Reshmitha Ramakrishnan*-Suresh Thayapurath - U GaunsManguesh- Albertina BalbinaDias-
Rajdeep Roy

National Institute of Oceanography, Goa 403004, India
(Ph: 0832-2450365)

(reshmitharamakrishnan@gmail.com / suresh@nio.org)

Abstract:

This is the first study carried-out to understand the phytoplankton genera in the low light (less than $50\mu\text{mol}/\text{m}^2/\text{s}$ of photosynthetically available radiation) for the estuarine and coastal waters of Goa, India. There were 93 phytoplankton genera observed of which the most abundant were *Skeletonema* spp., *Leptocylindrus* spp., *Thalassiosira* spp., *Cerataulina* sp., and *Fragilariopsis* sp. The centric diatom *Skeletonema* spp. was the most abundant phytoplankton genera observed during all the seasons. Similarly, other abundant genera observed all through the year in low light in the coastal and estuarine waters were *Cerataulina* sp., *Chaetoceros* spp., *Coscinodiscus* spp., *Leptocylindrus* spp., *Navicula* spp., *Nitzschia* spp., *Pleurosigma* spp., *Pseudo-nitzschia* spp., and *Thalassiosira* spp. Phytoplankton observed only in estuarine waters were *Bacillaria* sp., *Planktoniella* sp., *Biddulphia* sp., and *Asterionellopsis* spp., while *Enotia* sp., *Oxytoxum* sp., were observed only in the coastal waters during the summer season. Contributions of chlorophyll *a* and fucoxanthin were relatively higher at low light regions, while the photoprotective pigment β -carotene was lower than observed at the surface. The maximum spectral light available at the low light region varied for water types, and was 537 to 581 nm in the coastal waters, while it shifted to longer wavelengths 561 to 648 in the estuarine waters.

Keywords: *Coastal waters, estuaries, low light, photoacclimation, umbrophillic phytoplankton.*

Introduction

Light is the source of life on planet Earth. However, unlike the terrestrial environment where there is no dearth of solar light required for photosynthesis, the aquatic regions are not blessed to have sufficient light at all depths. Phytoplankton are planktons or 'wanderers' and have to survive wherever they are taken and hence phytoplankton have the abilities to survive under extreme light levels. The acclimation of phytoplankton under extreme light conditions form are labelled related to light adaptations such as high light or sun or 'heliophilic' and adapted to low light or shade or 'umbrophilic' (Ryther et al., 1959). Photoacclimation is their way of life (Dubinsky et al., 2010). Though it has been shown in laboratory studies that the minimum light level required by phytoplankton is about $2\mu\text{mol}/\text{m}^2/\text{s}$ (Overmann and Garcia-Pichel, 2005), the actually observed light levels are reported to be even lower (Raven and Cockell, 2006). They are very efficient at utilizing the energy and it has been observed that at the very low light respiration rates are much lower. Most of the microscopic O_2 evolving organism of cyanobacteria and eukaryotes can have photolithotrophic growth i.e. using photons as the sole energy to compensate irradiance as low as about $0.35\mu\text{mol}/\text{m}^2/\text{s}$ (Raven et al., 2000).

The light is spectral in nature with varying levels of energy inversely proportional to the wavelengths. Hence these phytoplankton in low light regions need to be studied for their photoacclimation and 'chromatic acclimation'. Though it has been argued that the spectral light was inconsequential and was believed earlier that photosynthesis required light in the PAR region (Dring, 1981), which however proved wrong with recent studies. Recent studies revealed that spectral light does play an important role in photosynthesis (Gorai et al., 2014).

The light harvesting capabilities can be appreciated when it is observed that there are extensive deep chlorophyll maxima observed just near the 1% of light levels (Moore et al., 2006; Dubinsky, 2010). The global primary productivity estimations do consider light levels only till 1% and it has been evident from various studies and observations that there were plenty of phytoplankton even below this light levels whose contributions were significant and cannot be ignored. There also seems to hold some relations with regards to their light utilization for photosynthesis between the taxonomic groups of phytoplankton and cell sizes observed in low light (Richardson et al., 1983; Geider et al., 1986; Cullen and Macintyre, 1998; Finkel, 2001; Boyd et al., 2010).

One of the earliest studies on phytoplankton community in the coastal and estuarine waters of Goa were from Devassy and Goes (1988) which provided information on the seasonal variations of phytoplankton communities in the coastal and estuarine waters. These drowned river valley type estuaries are known as 'monsoonal estuaries' and the monsoon has an influence on the phytoplankton

community (Patil and Anil, 2011). Detailed studies of the phytoplankton in these estuaries exhibited the large diversities of the phytoplankton communities, with blooms and harmful algae (Matondkar et al., 2007; Patil and Anil, 2011; Pednekar et al., 2012; Pednekar et al., 2014).

Presently there is no information available of the phytoplankton composition in the low light regions of the waters of Goa. The availability of light at the benthic regions of the estuarine and coastal waters of Goa show spatial and temporal variations and there were regions in the water column that were under very low light. This is the first study that reports the phytoplankton genera at low light in these coastal and estuarine waters of Goa and the variations of physical, biological and optical parameters at these low light regions.

Materials and methods

Study area

The field measurements were carried out in the coastal and estuarine waters of Goa, a site located between latitude 15.3° to 15.73°N and longitude 73.6 to 74.1°E at the central west coast of India (Figure 1). The study areas included coastal waters and the two estuaries Mandovi and Zuari. One of the main factors that influence these waters are the rains during the southwest monsoon in the months of June to September hence they are often called as “monsoonal estuaries”. Tides are the sole driving force for circulation and mixing in the estuaries during the non-monsoon season (Shetye et al., 2007; Vijith et al., 2009). There are much fewer discharges during the non-monsoon seasons and the waters are vertically well mixed. Monsoonal upwelling is the common feature observed during the southwest monsoon in the coastal waters of Goa, which plays an important role in the biogeochemistry of these waters. Seasonal hypoxia has been observed in the sub-surface waters during the post-monsoon period of September to October (Naqvi et al., 2000; Naqvi et al., 2006). The coastal waters have algal blooms of varied species, some of which are seasonal such as *Trichodesmium* blooms which were often observed during the summer season (Naqvi et al., 1998; Desa et al., 2005; Parab et al., 2006; Gomes et al., 2008). Temperature inversions were also reported in these waters (Thadathil and Gosh, 1992). Large variations in colored dissolved organic matter (CDOM) were observed in these waters with contrasting features in the estuarine and coastal waters (Albertina Balbina Dias et al., 2017).

The depth of the stations in the coastal waters varied between 2.5 to 26 m and 2 to 8 m in the estuaries. The optical studies indicate that secchi depth varies from 2.1 to 3.1m in the coastal waters and 1.2 to 2.4m in the estuaries.

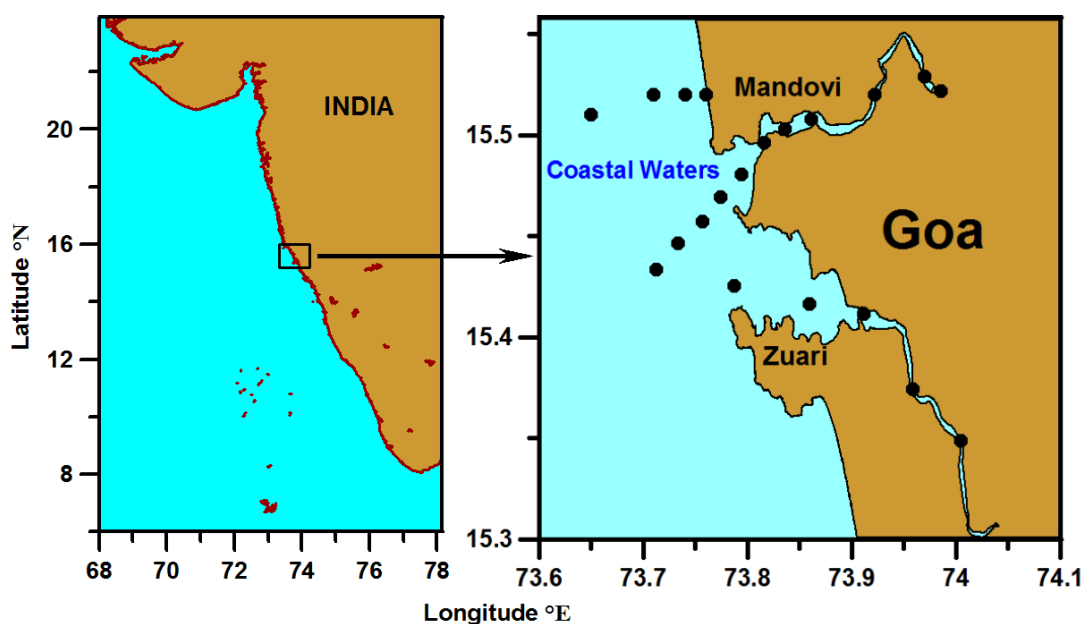


Figure 1. Study area showing water sample collections sites in the coastal and estuarine waters of Goa, India.

Environmental data and sample collection

There were two types of data used for the study, the one that was available from the measurements using in-situ profiling instrument and the other available from the water samples collected at the same stations as in-situ measurements. The measurements and water samples were collected during field measurement campaigns on a boat in the coastal and estuarine waters every month during fair weather conditions at pre-identified stations (Figure 1). No measurements were carried out in the coastal waters during the monsoon period. The data include from the period 2013 to 2016 covering 50 stations of which 37 were in the estuaries and 13 in the coastal waters.

Most of the earlier studies related to low light and photoacclimation were restricted in the lower region of PAR about $30\mu\text{mol}/\text{m}^2/\text{s}$ (Fischer et al., 1996; Tracy and Macintyre, 2000; Zastrow, 2001; Stayehr et al., 2002; Rodrigue et al., 2006; Finkel et al. 2006; Dubinsky and Stambler, 2009) the data used for this study included only data at depths with PAR values less than $50\mu\text{mol}/\text{m}^2/\text{s}$, which is equivalent to about $12.5\text{ W}/\text{m}^2$ of solar irradiance in PAR region (Suresh et al., 1996). Though the minimum value of PAR measured was about $0.22\mu\text{mol}/\text{m}^2/\text{s}$ this could be within small error considering the detection limit of the radiometer. The mean of the spectral dark readings taken in the laboratory was about $0.2\mu\text{W}/\text{cm}^2/\text{nm}$ and dark current readings were taken care during processing. All optical, physical, biological and ancillary parameters were obtained at the same depths of low light observations (Figure 2).

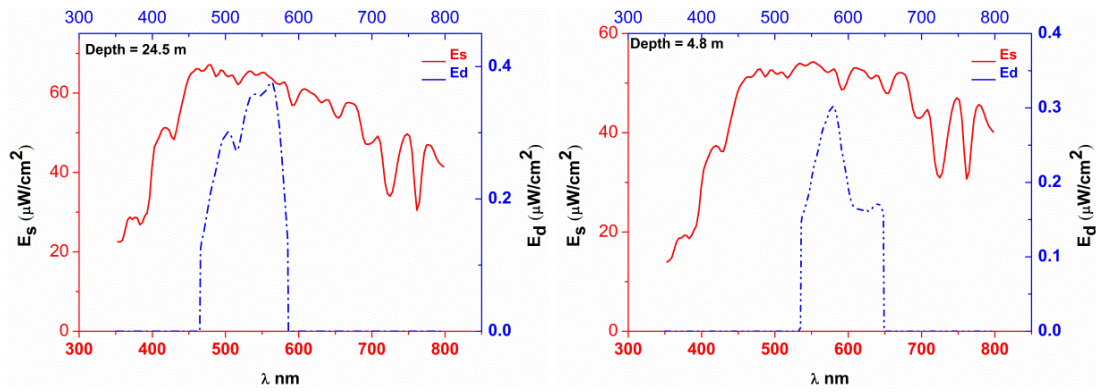


Figure 2. Solar irradiance at the surface of the water (straight line) and at low light region (dashed line) for the two stations in the coastal waters of Goa (Left) and Mandovi estuary (Right). Depth at low light is indicated in the top left corner of each diagram.

The water samples were collected either by Niskin water sampler or automated water sampler using silicon transparent pipe with the pump. The water samples were used for analysis in the laboratory for phytoplankton taxonomy with light microscope (Olympus BX 51) and scanning electron microscope (Hitachi TM3030), and the same water sample were used for deriving chlorophyll using fluorometric method (Trilogy-Turner), total suspended matter using the gravimetric method, CDOM using spectrophotometer (Shimadzu UV-2600) and pigments using HPLC (Agilent 1100 series).

The water samples (250ml) were collected in amber colored plastic bottles and preserved following the method described by Santhanam et al., 1987 using 2ml of lugol's iodine solution. For microscopic analysis, samples were concentrated to 5-10ml by siphoning the top layer with a tube covered with a 10 μ m nytex filter on one end. Sample concentrates were transferred to a 1ml capacity Sedgwick-Rafter and counted using light microscope (Olympus BX 50) at 20x and 40x magnification. Phytoplankton cell identifications were based on standard taxonomic keys (Tomas, 1997). The results were expressed as numbers of cells L⁻¹.

The water samples collected at discrete depths were preserved and analysed in the laboratory following the standard protocols. The biological parameter included colored dissolved organic matter (CDOM), chlorophyll (Chl), total suspended matter (TSM). The phytoplankton pigments were measured using HPLC. Apart from the biological parameters derived from the water sample analysis, the depth profiles of parameters such as CDOM, chlorophyll fluorescence were available from the optical sensors available with the hyper-spectral radiometer.

The optical properties were measured in-situ using profiling optical instruments. The apparent optical properties were derived from the measurements using a hyper-spectral profiling radiometer Hyper-OCR (Satlantic, Canada), which provided profiles of downwelling irradiance, upwelling

radiance, diffuse attenuation coefficients, PAR (photosynthetically available radiation (400-700 nm)) and surface solar irradiance in the spectral range of 350-800 nm. The mean of the spectral dark readings taken in the laboratory was about 0.2 $\mu\text{W}/\text{cm}^2/\text{nm}$. This was considered as the detection limit. The surface irradiance data were available from a reference sensor mounted at a clear site on the boat. The inherent optical properties were measured using an AC-9 instrument (Wet Labs) which provided profiles of absorption, and beam attenuation coefficient (without the contributions from pure water) at nine wavelengths. The instrument AC-9 was calibrated in the laboratory prior to every field measurement using optically clean water, whereas hyperspectral radiometer was periodically factory calibrated. The optical data were processed following the standard protocols (Mueller et al., 2003a, 2003b). The radiometer data were processed using the latest software Prosoft provided by the manufacturer of the radiometer.

The ancillary parameters such as temperature, salinity and density were available from the profiling radiometer. Secchi depths were also measured.

Results

There were 93 phytoplankton genera observed in the low light regions of coastal and estuarine waters of the study area and listed here are the 20 phytoplankton genera and their abundance (Table 1). The abundance of phytoplankton genera is given as the percent of the total counts of all genera. Most of these genera listed here have also been reported earlier to reside in low light conditions such as *Asterionella* sp. (Zastrow, 2001), *Chaetoceros* spp. (Finkel et al., 2006), *Coscinodiscus* spp. (key et al., 2010), *Cyclotella* sp. (Fischer et al., 1996), *Ditylum* sp. (Stayehr et al., 2002), *Fragilariasp.* (Tammy et al., 2009), *Prorocentrum* sp. (Rodrigue et al., 2006), *Skeletonema* spp. (Tracy and Macintyre, 2000), *Synechococcus* spp. (Barlow and Alberte, 1987), and *Thalassiosira* sp. (Dubinsky and Stambler, 2009). Most of the genera observed here were diatoms and diatoms can adapt to all light levels (Richardson et al., 1983).

There were about 80 genera observed in the "very" low light regions (less than $5\mu\text{mol}/\text{m}^2/\text{s}$ of PAR). The leading twenty phytoplankton in these very low light regions as per their abundance were *Skeletonema* spp., *Leptocylindrus* spp., *Thalassionema* spp., *Chaetoceros* spp., *Cerataulina* sp., *Bacillaria* sp., *Navicula* spp., *Nitzschia* spp., *Pseudo-nitzschia* spp., *Proboscia* sp., *Coscinodiscus* spp., *Prorocentrum* spp., *Dactyliosolen* sp., *Cylindrotheca* sp., *Lauderia* sp., *Pleurosigma* spp., *Licmophorasp.*, *Thalassiosira* spp., *Eucampia* sp. and *Cyclotella* spp. The images of ten most occurring low light phytoplankton are shown in the Figure 3.

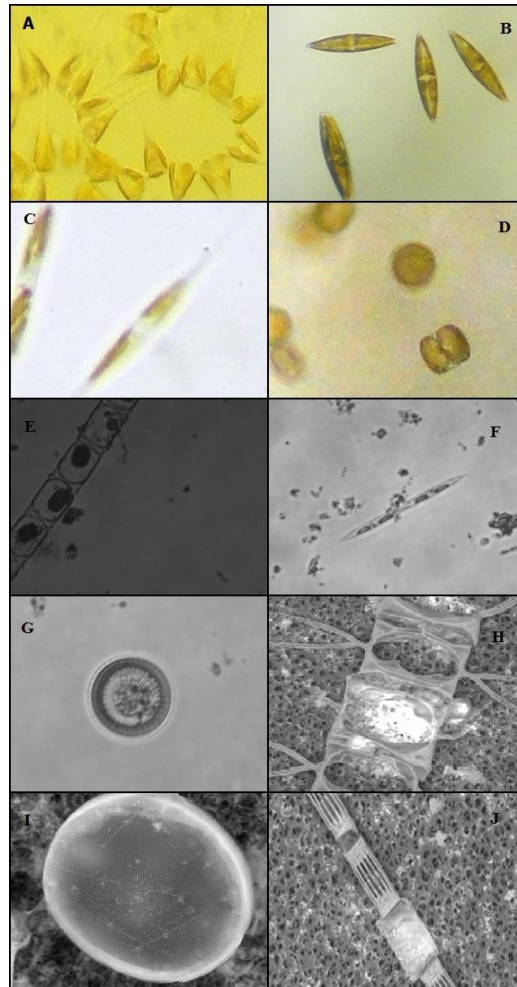


Figure 3. Microscopic images of A) *Asterionellopsis* sp., B) *Navicula* sp., C) *Nitzschia* sp., D) *Thalassiosira* sp., E) *Cerataulina* sp., F) *Pseudo-nitzschia* sp., G) *Cyclotella* sp., and SEM(Scanning electron microscope) images of H) *Chaetoceros* sp., I) *Coscinodiscus* sp., and J) *Skeletonema* sp.

Physical parameters

The measurements on physical characteristics of the waters were taken during all seasons in estuarine and coastal (except monsoon) waters which showed large variations in salinity, temperature and density over the period of study which were consistent with the earlier observations by others for these waters. The range of physical environmental parameters observed at the occurrences of these twenty genera in low light are given in Table 1. The temperature varied between 25.0 to 32.9°C, the salinity from 0.14 to 35.7 and density from 4.6 to 22.7(kg/m³).

Table 1. Physical environmental parameter for low light phytoplankton genera observed in coastal and estuarine waters of Goa.

Low light phytoplankton genera	Mean percentage occurrence	Minimum Temp(°C)	Maximum Temp (°C)	Minimum Salinity	Maximum Salinity	Minimum Density (Kg/m ³)	Maximum Density (Kg/m ³)
<i>Skeletonemaspp.</i>	13.03	25.038	32.39	0.14	35.42	4.66	22.61
<i>Leptocylindrus spp.</i>	7.65	25.038	32.09	0.14	35.42	4.66	22.76
<i>Thalassiosira spp.</i>	7.46	25.038	31.18	2.81	35.31	4.66	22.61
<i>Cerataulina</i> sp.	6.93	27.485	32.33	2.81	35.74	4.66	22.58
<i>Fragilariopsis</i> sp.	6.70	32.346	32.35	31.88	31.88	18.61	18.61
<i>Chaetoceros</i> spp.	5.56	25.038	32.33	0.39	35.74	4.66	22.61
<i>Asterionellopsis</i> spp.	5.38	25.038	29.33	11.05	35.31	4.66	22.61
<i>Licmophora</i> sp.	4.76	25.038	31.19	11.96	35.42	4.79	22.61
<i>Navicula</i> spp.	4.70	25.038	32.35	0.14	35.74	4.66	22.76
<i>Oxytoxum</i> sp.	4.70	32.284	32.28	26.67	26.67	14.75	14.75
<i>Coscinodiscs</i> spp.	4.19	25.038	32.33	11.05	35.74	4.66	22.61
<i>Pseudo-nitzschia</i> spp.	4.07	27.111	32.28	0.14	35.42	4.66	22.43
<i>Nitzschia</i> spp.	3.76	25.038	32.35	0.14	35.74	4.66	22.76
<i>Heterocapsa</i> sp.	3.50	32.284	32.28	26.67	26.67	14.75	14.75
<i>Prorocentrum</i> sp.	3.22	27.275	32.33	0.39	35.74	10.69	22.58
<i>Cochlodinium</i> sp.	3.20	27.275	32.33	11.05	35.09	4.66	22.52
<i>Pleurosigma</i> spp.	3.08	25.038	32.35	0.14	35.31	4.66	22.61
<i>Bacillaria</i> sp.	2.95	26.641	30.33	0.14	34.89	19.28	21.54
<i>Cyclotella</i> spp.	2.89	25.038	32.35	11.05	35.74	4.66	22.61
<i>Dactyliosolen</i> sp.	2.53	25.038	32.09	0.39	34.81	4.66	22.61

Morphology

The shapes of phytoplankton genera observed in low light were mostly cylindrical, rectangular box, aprism on parallelogram base and spherical.

Seasonal variations

To study the temporal pattern the seasons were labelled as summer (March-May), monsoon (June-September), post-monsoon (October-November) and winter (December-February) season. The

phytoplankton genera were selective in their adaptations to the seasons and water types. There were distinct patterns of adaptation of phytoplankton genera observed with those noticed only on coastal waters or estuaries and during a particular season and while others inhabiting in all waters at all times.

Skeletonema spp., is a type of cylindrical, non-flagellated centric diatom group with cosmopolitan distribution and was the most frequently and abundantly observed genera in these waters during all season (Matondkar et al., 2007; Patil and Anil, 2011; Suraksha Mohan Pednekar et al., 2014). Similarly, other genera observed all through the year in the coastal and estuarine waters were *Cerataulina* spp., *Chaetoceros* spp., *Coscinodiscus* spp., *Leptocylindrus* spp., *Navicula* spp., *Nitzschia* spp., *Pleurosigma* spp., *Pseudo-nitzschia* spp., and *Thalassiosira* spp.

Bacillaria sp., *Planktoniella* sp., *Biddulphia* sp., *Isthmia* sp., and *Asterionellopsis* spp., were only observed in estuarine waters (Matondkar et al., 2007). *Enotia* sp. and *Oxytoxum* sp., were observed only in the coastal waters during the summer season.

Optical parameters

There were two types of optical parameters, one that provided information on the amount of light available and the second that described the optical properties of water.

The optical parameters observed at these low light regions that quantified the amount of light available were photosynthetically available radiation (PAR) 400-700nm, the percentage of PAR (%PAR) and downwelling spectral solar irradiance (E_d) which were observed at depth and the spectral solar irradiance measured above the surface of the water.

There were also optical properties of water that described the light in these water. These included apparent and inherent optical properties. The inherent optical properties were absorption, beam attenuation, and backscattering coefficients. These parameters characterised the light conditions and suggested of the reasons for the low light conditions. The apparent optical properties included the downwelling irradiance (E_d), PAR and diffuse attenuation coefficient (K_d). The optical parameters that were indicators of the penetration of light were the transparency of water (Secchi depth) and first optical depth Z_{90} .

The statistics of the observed optical parameters are listed in Table 2 and these parameters were observed at the water column depths where the PAR values were less than $50 \mu\text{mol}/\text{m}^2/\text{s}$, which is equivalent to about $12.5 \text{ W}/\text{m}^2$ (Suresh et al., 1996). The %PAR were less than 10 in these waters.

Table 2. Optical parameter observed during low light environmental condition at coastal and estuarine waters off Goa.

Parameters	Minimum	Maximum	Mean	SD
PAR($\mu\text{mol}/\text{m}^2/\text{s}$)	0.21	50.86	13.45	15.79
%PAR	0.01	8.21	1.33	1.70
Wavelength of maximum solar irradiance at low light depth (nm)	534	648	577	21.90
Maximum spectral irradiance of light at low light depth ($\mu\text{W}/\text{cm}^2$)	0.14	9.26	2.90	2.88
Wavelength of maximum surface solar irradiance (nm)	460	551	494	30
Maximum of surface spectral irradiance ($\mu\text{W}/\text{cm}^2$)	23.18	178.97	102	38.3
Absorption at 412 nm (m^{-1}) (without water)	0.29	12.74	2.33	2.46
Absorption at 676 nm (m^{-1}) (without water)	0.03	0.65	0.16	0.11
Beam attenuation at 412nm (m^{-1}) (without water)	2.40	126.17	13.29	19.7
Beam attenuation at 676 nm (m^{-1}) (without water)	1.66	141.61	10.44	20.6
Back scattering coefficient at 676 nm	0.02	0.90	0.16	0.18
Diffuse attenuation coefficient at 490 nm	0.009	4.26	1.1	0.88
Wavelength at maximum Z_{90} (nm)	481	582	561	24
Maximum Z_{90} (m)	0.55	8.15	2.38	2.0

Biological parameters

The pigment data from HPLC analysis were available only for few stations at the low light region are reported here. From these limited data of phytoplankton pigments, apart from chlorophyll, the most abundant pigments were fucoxanthin, zeaxanthin and β -carotene (Figure4). The contribution of the individual pigment to the total pigment was derived by normalising the pigment values with the total pigments. Contributions of chlorophyll *a* and fucoxanthin were relatively higher at low light regions, while β -carotene was lower than observed at the surface. One of the noteworthy observations was the contribution of chlorophyll *a* to be above 60% at the low light region, while at the surface it was about 50%.

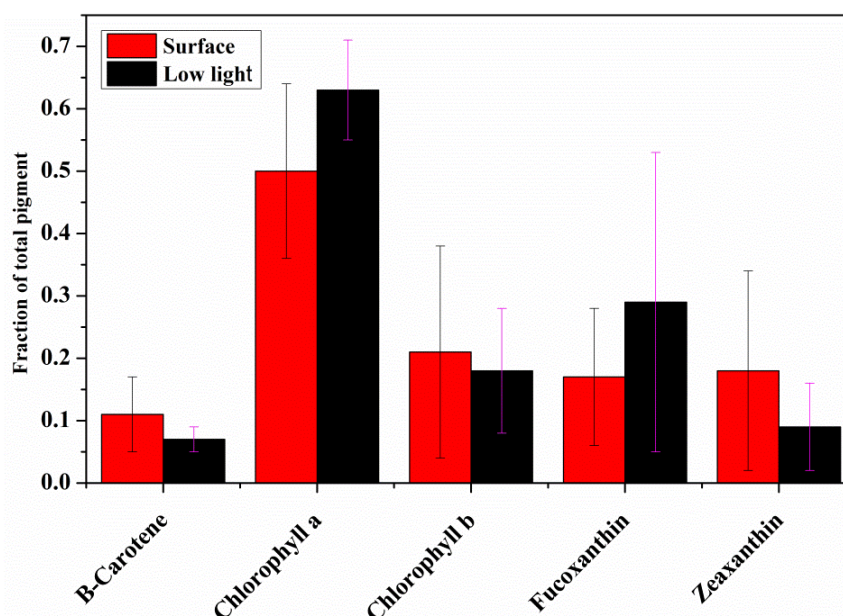


Figure 4. Phytoplankton pigments at the surface and low light region.

Apart from the information on the phytoplankton pigments, the other parameters available from waters samples analysis were chlorophyll, CDOM, and total suspended matter and supporting biological parameters measured with optical sensors available on profiling radiometer were CDOM and chlorophyll fluorescence. pH was determined with a handheld pH meter (Table 3). The values of chlorophyll, CDOM, and TSM were appreciable to the mean value of these parameters observed in the water column.

The presence of optically active substances that attenuate light and create low light conditions are evident from the high values of the optical properties such as absorption due to CDOM, absorption in the blue region at 412 nm, beam attenuation coefficients (attenuation and scattering), high backscattering coefficient and diffuse attenuation coefficient. The biological parameters like CDOM and TSM were also found to be higher at the bottom. CDOM absorb light particularly in the blue and green region, leaving less light in the PAR region, while particles scatter and attenuate light. The high TSM could be due to the river transport and resuspension from the bottom.

Table 3. Biological parameters observed during low light environmental condition at coastal and estuarine waters of Goa.

Parameter	Minimum	Maximum	Mean	SD
Chlorophyll <i>a</i> (mg/m ³)	0.4	12.83	3.9	2.9
Total suspended matter (TSM) (g/m ³)	3.06	110	20.74	21.45
CDOM absorption at 412 nm, $a_g(412)$ (m ⁻¹)	0.08	0.86	0.34	0.22
CDOM fluorescence	0.02	15.91	2.38	2.43
Fluorescence	0.3	3.74	1.32	0.83
pH	7.12	8.18	7.63	0.31

Discussion

The low light regions are close to the bottom and the phytoplankton will require an adequate supply of nutrients for their sustenance. There is no dearth of nutrients in these estuaries (Verlencar, 1987). Mandovi and Zuari estuaries are also sources of nutrients to the coastal waters, though their concentrations are comparatively lower than estuaries. These help in the sustenance of the efficient light harvesting umbrophillic phytoplankton and seem to be the reason for the relatively higher chlorophyll found in these low light waters.

Photoacclimation by phytoplankton to extreme levels of light affects pigment ratios of these phytoplankton. Our observations on the distributions of pigments at high and low light show that chlorophyll and fucoxanthin were higher at low light levels, which agree with earlier studies that show light-harvesting pigments increase under low light and particularly chlorophylls, phycobilins, fucoxanthin and peridinin under low light (Dubinsky and Stambler, 2009; YuliaPinchasovGrinblat et al., 2011). β -carotene help in photoprotective mechanism under high light conditions and in low light conditions they are inconsequential so β -carotene were relatively lower (Krinsky, 1989; Fan et al., 1995; Choudhury and Behera, 2001; Wang et al., 2003, Schagerl and Muller, 2006). Fucoxanthin is associated with diatoms and used to indicate its abundance and its level was higher at low light regions than the surface. Most of the species observed here were diatoms and they can adapt to all light conditions (Richardson et al., 1983).

Most of these species listed here have also been reported earlier by others reside in low light conditions such as *Asterionella* sp. (Zastrow,2001), *Chaetoceros* spp. (Finkel et al., 2006), *Coscinodiscus* spp. (key et al., 2010), *Cyclotella* sp. (Fischer et al., 1996), *Ditylum* sp. (Stayehr et al., 2002), *Fragilaria* sp. (Tammy et al., 2009), *Prorocentrum* sp. (Rodrigue et al., 2006), *Skeletonema* spp. (Tracy and Macintyre, 2000), *Synechococcus*spp. (Barlow and Alberte, 1987), and *Thalassiosira* sp. (Dubinsky and Stambler, 2009).

Apart from the metabolic rate (growth, photosynthesis, respiration) light utilization by phytoplankton is also influenced by their size and shape (Raven, 1984; Kirk, 1994; Finkel, 2001). Morphometric and allometric parameters of phytoplankton are important indicators of the phytoplankton ecology and are related to the nutrient uptake, light utilization for photosynthesis (Vadrucci et al., 2013). Phytoplankton such as *Thalassiosira* spp., and *Skeletonema* spp., are filamentous types. The filamentous shape has better light antennae and therefore can photosynthesize with high capacity at low ambient light (Reynolds, 1997). Phytoplankton genera have been categorised according to their shapes (Sun and Liu, 2003) and the phytoplankton shapes observed here in low light were mostly

cylindrical, rectangular box, a prism on parallelogram base and spherical, suggesting these shapes could be of advantage in efficient light harvesting.

The maximum solar light available were within the spectral range of 537 to 648 nm and the range varied for water types, and was 537 to 581 nm in the coastal waters, while it shifted to longer wavelengths 561 to 648 in the estuarine waters. The chromatic requirements can also be justified from the light absorbing properties by pigments in phytoplankton. The ubiquitous pigment present in all the phytoplankton is the chlorophyll *a* with major absorption occurring around 440 nm. The absorptions of other pigments chlorophyll *b* (Chl*b*), chlorophyll *c* (Chl*c*), fucoxanthin (Fuco), β -carotene (β -caro), and peridinin (Peri), have absorption peaks in the blue-green regions. Thus, it is evident that for photosynthesis blue-green light is essential. The phytoplankton surviving at low lights have a high efficient mechanism of light harvesting and utilizing every photon available (Stambler and Dubinsky, 2007; Dubinsky and Stambler, 2009; Halsey and Jones, 2015). The spectral light availability could change in future due to anthropogenic activities and climate change affecting the river run-off that will affect the optically active parameters such as the concentrations of CDOM, particle load (algal and non-algal), which could alter the underwater light field and spectral light in water. Hence, there is a need to understand the chromatic acclimation of these phytoplankton species observed in the low light.

Most of the primary production evaluated through models and measurements were limited to a lower limit of 1% light levels (Dubinsky, 2010) however it is noticed there were considerable amount of umbrophillic phytoplanktons below this 1% light levels and hence neglecting the contribution of these phytoplankton could under estimate the primary production and carbon related budgeting.

Monsoon plays an important role in the variations of turbidity and nutrient levels in these waters.

Conclusion

The study focus on the phytoplankton species of the estuaries and coastal waters of Goa in low light regions, which has been attempted for the first time for these waters. The results of the studies even with this limited data, provided sufficient evidence of the various phytoplankton species, pigment variations, spectral light and the environmental conditions in the low light regions.

Though this study has been limited and preliminary in only reporting the phytoplankton communities and bio-optical conditions at low light levels, this could lay a foundation to the further studies related to phytoplankton acclimation in these waters. There is lots to understand of phytoplankton in the extreme light levels (Dubinsky, 2009). The light levels and nutrients in these estuaries and coastal waters could be affected by anthropogenic influence, monsoon and climatic changes and hence a

continuous monitoring of the umbrophillic species of phytoplankton with regards to changes in these parameters will need to be studied to understand the phytoplankton acclimations in low light levels. There is also a gap in the present study without the information on the nutrients and this could have supplemented to understand the role of nutrients in the photoacclimation and light utilization efficiencies of these phytoplankton listed in the low light (Dubinsky and Schofield, 2010). Hence there is a scope to study the nutrient availability and the phytoplankton growth and related topics such as the limiting nutrient levels for the survival of various species of phytoplankton in low light depending on their size and characteristics, role of micro and macro nutrients, since the watershed of the estuaries of Goa include iron ore and manganese mines, the role micro nutrients such as iron (Fe) need to be studied.

Acknowledgements

The authors are grateful to the Director, CSIR-National Institute of Oceanography, Goa, India for the kind support. Authors are also indebted to the colleagues for the field measurements, discussions, and assistance in preparing the manuscript. The work was funded by Indian National Centre for Ocean Observing System (INCOIS) under SATCORE program and National Remote Sensing Centre (NRSC) under NICES programme

REFERENCES

1. Albertina Balbina Dias., Suresh Thayapurath., Aravind Sahay., Prakash Chauhan. (2017): Contrasting characteristics of colored dissolved organic matter of the coastal and estuarine waters of Goa during summer. - Indian Journal of Geo-Marine Science 46: 860-870.
2. Barlow, G., Alberte, R.S. (1987): Photosynthetic characteristics of phycoerythrin containing marine *Synechococcus* spp. 11. Time course responses of photosynthesis to photoinhibition. - Marine ecology-Progress series 39: 191-196.
3. Boyd, P.W., Strzepek, R., Fu, F., Hutchins, D.A. (2010): Environmental control of open-ocean phytoplankton groups: now and in the future. - LimnolOceanogr 55: 1353-1376.
4. Choudhury, N.K., Behera, R. (2001): Photoinhibition of photosynthesis: Role of carotenoids in photoprotection of chloroplast constituents. - Photosynthetica 39: 481-488.
5. Cullen, J.J., Macintyre, J.G. (1998): Behavior, physiology and the niche of depth-regulating phytoplankton. -In: Anderson, D.M., Cembella, A.D., Hallegraeff, G.M. (ed.) Physiological ecology of harmful algal blooms, Springer-Verlag, Heidelberg,
6. Desa, E., Suresh, T., Matondkar, S.G.P., Goes, J., Mascarenhas, A.A.M.Q., Parab, S.G., Shaikh, N., Fernandes, C.E.G. (2005): Detection of *Trichodesmium* bloom patches along the

- eastern Arabian Sea by IRS-P4/OCM ocean color sensor and by in-situ measurements. - Indian Journal of Marine Sciences 34: 374-386.
7. Devassy, V.P., Goes, J.I. (1998): Phytoplankton Community Structure and Succession in a Tropical Estuarine Complex (Central West Coast of India). - Estuarine, Coastal and Shelf Science 27: 671-685.
 8. Dring, M.J. (1981): Chromatic adaptation of photosynthesis in benthic marine-algae-an examination of its ecological significance using a theoretical model. - LimnolOceanogr 26: 271-284.
 9. Dubinsky, Z., Schofield, O. (2010): From the light to the darkness: Thriving at the light extremes in the oceans. - Hydrobiologia 639: 153-171.
 10. Dubinsky, Z., Stamble, N. (2009): Photoacclimation Processes in Phytoplankton: Mechanisms, Consequences, and Applications. - Aquatic Microbial Ecology 56: 163-176.
 11. Fan, L., Vonshak, A., Gabbay, R., Hirshberg, J., Cohen, Z., Boussiba, S. (1995): The biosynthetic pathway of astaxanthin in a green algae *Haematococcus pluvialis* as indicated by inhibition with diphenylamine. - Plant Cell Physiol 36: 1519-1524.
 12. Finkel, Z.V. (2001): Light absorption and size scaling of light-limited metabolism in marine diatoms. - LimnolOceanogr 46: 86-94.
 13. Finkel, Z.V. (2006): Irradiance and the elemental stoichiometry of marine phytoplankton. - LimnolOceanogr 51: 2690-2701.
 14. Geider, R.J., Platt, T., Raven, J.A. (1986): Size dependence of growth and photosynthesis in diatoms: a synthesis. - Marine ecology-Progress series 30: 93-104.
 15. Gomes, H.D.R., Goes, J.I., Matondkar, S.G.P., Parab, S.G., Al-Azri, A.R.N., Thoppil, P.G. (2008): Blooms of *Noctiluca miliaris* in the Arabian Sea-An in situ and satellite study. Deep Sea Research Part I. - Oceanographic Research Papers 55: 751-765.
 16. Gorai, T., Katayama, T., Obata, M., Murata, A., Taguchi, S. (2014): Low blue light enhances growth rate, light absorption, and photosynthetic characteristics of four marine phytoplankton species. - Journal of Experimental Marine Biology and Ecology 459: 87-95.
 17. Halsey, K.H., Jones, B.M. (2015): Phytoplankton Strategies for Photosynthetic Energy Allocation. - Annual Review of Marine Science 7: 265-297.
 18. Key, T., McCarthy, A., Campbell, D.A., Six, C., Roy, S., Finkel, Z.V. (2010): Cell size trade-offs govern light exploitation strategies in marine phytoplankton. - Environ Microbiol 12: 95-104.
 19. Kirk, J.T.O. (1994): Light and Photosynthesis in Aquatic Ecosystems. -United Kingdom, Cambridge University Press.
 20. Krinsky, N.I. (1989): Antioxidant functions of carotenoids. - Free Radical Biology and Medicine 7: 617-635.

21. Mark Moore, C., David Suggett, J., Anna Hickman, E., Jonathan Sharples., Richard Geider, J., Patrick Holligan, M. (2006): Phytoplankton photoacclimation and photoadaptation in response to environmental gradients in a shelf sea. -*LimnolOceanogr* 51: 936-949.
22. Matondkar, P.S.G., Gomes, H.D., Parab, S.G., Pednekar, S., Goes, J.I. (2007): Phytoplankton diversity, biomass and production. -In: Shetye, S.R., Kumar, D., Shankar, D. (ed.) *The Mandovi and Zuari Estuaries*. Dona Paula, Goa, India. National Institute of Oceanography.
23. Mueller, J.L., Fargion, G.S., McClain, C.R., Pegau, S., Zaneveld, J.R.V., Mitchell, B.G., Kahru, M., Wieland, J., Stramska, M. (2003b): Inherent optical properties: Instruments, characterizations, field measurements and data analysis protocols. - *Handbook of Ocean optics protocols for satellite ocean color sensor validation* 4.
24. Mueller, J.L. (2003a): In-water radiometric profile measurements and data analysis protocols. - *Handbook of Ocean Optics Protocols for Satellite Ocean Color Sensor Validation*: 7-20.
25. Naqvi, S.W.A., George, M.D., Narvekar, P.V., Jayakumar, D.A., Shailaja, M.S., Sardesai, S., Sarma, V.V.S., Shenoy, D.M., Naik, H., Maheswaran, P.A., KrishnaKumari, L., Rajesh, G., Sudhir, A.K., Binu, M.S.(1998): Severe fish mortality associated with red tide observed in the sea off Cochin. - *Current Science*75: 543-544.
26. Naqvi, S.W.A., Jayakumar, D.A., Narvekar, P.V., Naik, H., Sarma, V.V.S.S., D'souza, W., Joseph, S., George, M.D.(2000): Increased marine production of N₂O due to intensifying anoxia on the Indian continental shelf. – *Nature*408: 346-349.
27. Naqvi, S.W.A., Naik, H., Jayakumar, D.A., Shailaja, M.S., Narvekar, P.V. (2006): Seasonal oxygen deficiency over the western continental shelf of India, in *Handbook of Past and present water column anoxia*. -In: Neretin, L.N. (ed.) Springer Netherlands.
28. Overmann, J., Garcia-Pichel, F. (2005): The phototrophic way of life. - In: Dworkin, M. (ed.) *The Prokaryotes: An Evolving Electronic Resource for the Microbiological Community*. Springer, New York.
29. Parab, S.G., Matondkar, S.G.P., Gomes, H.D.R.,Goes, J.I. (2006): Monsoon-driven changes in phytoplankton populations in the eastern Arabian Sea as revealed by microscopy and HPLC pigment analysis. - *Continental Shelf Research* 26: 2538-2558.
30. Patil, S., Anil, A.C. (2011): Variations in phytoplankton community in a monsoon-influenced tropical estuary. - *Environ Monit Assess* 182: 291-300.
31. Pednekar, S.M., PrabhuMatondkar, S.G.,VijayaKerkar. (2012): Spatiotemporal Distribution of Harmful Algal Flora in the Tropical Estuarine Complex of Goa, India. - *The Scientific World Journal* 2012.
32. Raven, J.A. (1984): A cost-benefit analysis of photon absorption by photosyntheticunicells. - *New Phytologist* 98: 593-625.
33. Raven, J.A., Cockell, C.S. (2006): Influence on photosynthesis of starlight, moonlight, planet light, and light pollution (reflections on photosynthetically active radiation in the universe). - *Astrobiology* 6:668-675.

34. Raven, J.A., Kübler, J.E., Beardall, J. (2000): Put out the light, and then put out the light. - J. Mar. Biol. Assoc 80: 1-25.
35. Reynolds, C.S. (1997): Vegetation processes in the pelagic, a model for ecosystem theory. - ECI, Oldendorf.
36. Richardson, K., Beardall, J., Raven, J.A. (1983): Adaptation of unicellular algae to irradiance: an analysis of strategies. - New Phytol 93: 157-191.
37. Rodriguez, F., Chauton, M., Johnsen, G., Andresen, K., Olsen, L.M., Zapata, M. (2006): Photoacclimation in phytoplankton: implications for biomass estimates, pigment functionality and chemotaxonomy. - Marine Biology 148: 963-972.
38. Ryther John, H., David, W., Menzel. (1959): Light adaptation by marine phytoplankton. - Limnol Oceanogr 4: 92-497.
39. Santhanam, R.N., Ramanathan, Venkataramanujan, K., Jegatheesun, G. (1987): Phytoplankton of the Indian seas [online]. Website <http://www.nal.usda.gov>.
40. Schagerl, M., Muller, B. (2006): Acclimation of chlorophyll a and carotenoid levels to different irradiances in four freshwater cyanobacteria. - J Plant Physiol 163: 709-716.
41. Shetye, S.R., Shankar, D., Neetu, S., Suprit, K., Michael, G.S., Chandramohan, P. (2007): The environment that conditions the Mandovi and Zuari estuaries. -In: Shetye, S.R., Kumar, D., Shankar, D., (ed.) The Mandovi and Zuari Estuaries. Dona Paula, Goa, India, National Institute of Oceanography.
42. Staehr, P.A., Henriksen, P., Markager, S. (2002): Photoacclimation of four marine phytoplankton species to irradiance and nutrient availability. - Aquatic microbial ecology 238: 47-59.
43. Stambler, N., Dubinsky, Z. (2007): Marine phototrophs in the twilight zone. -In: Seckbach, J. (ed.) Algae and cyanobacteria in extreme environments series: cellular origin, life in extreme habitats and astrobiology. Springer-Dordrecht.
44. Sun, J., Liu, D. (2003): Geometric models for calculating cell bio volume and surface area for phytoplankton. - J Plankton Res 25: 1331-1346.
45. Suraksha Mohan Pednekar., VijayaKerkar., Shivprasad Ganesh PrabhuMatondkar. (2014): Spatiotemporal distribution in phytoplankton community with distinct salinity regimes along the Mandovi estuary, Goa. India. - Turk J Bot 3: 800-818.
46. Suresh, T., Desa, E., Desai, R.G.P., Jayraman, A., Mehra, P. (1996): Photosynthetically available radiation in the central and eastern Arabian sea. - Current Science 71: 883-887.
47. Tamar Fisher., Johanna Minnaard., Zvy Dubinsky. (1996): Photoacclimation in the marine algae *Nannochloropsis* sp. (Eustigmatophyte): a kinetic study. - Journal of Plankton Research 18: 1797-1818.
48. Tammy, L., Karst-Riddoch., Hilmar Malmquist, J., Smol P. (2009): Relationships between freshwater sedimentary diatoms and environmental variables in Subarctic Icelandic lakes. - Fundamental and Applied Limnology 175: 1-28.

49. Thadathil, P., Gosh, A.K. (1992): Surface layer temperature inversion in the Arabian Sea during winter. - *Journal of Oceanography* 48: 293-304.
50. Tomas, C.R. (1997): *Identifying Marine Phytoplankton*. - San Diego, CA, USA.
51. Tracy Anning., MacIntyre, L. (2000). Photoacclimation in the marine diatom *Skeletonemacostatum*. - *LimnolOceanogr* 45: 1807-1817.
52. Vadrucci,M.R., Mazziott, C., Fiocca, A. (2013): Cell biovolume and surface area in phytoplankton of Mediterranean transitional water ecosystems: methodological aspects. - *Transitional Waters Bulletin* 7: 100-123.
53. Verlencar,X.N. (1987): Distribution of nutrient in the coastal and estuarine waters of Goa. - *Mahasagar bulletin of the national institute of oceanography* 20: 205-215.
54. Vijith, V., Sundar, D., Shetye, S.R. (2009): Time-dependence of salinity in monsoonal estuaries. - *Estuarine, Coastal and Shelf Science* 85: 601-608.
55. Wang, M.C., Bohmann, D., Jasper, H. (2003): JNK Signaling Confers Tolerance to Oxidative Stress and Extends Lifespan in *Drosophila*. - *Developmental Cell* 5: 811-816.
56. YuliaPinchasov-Grinblat., Razy Hoffman., Zvy Dubinsky. (2011): The Effect of Photoacclimation on Photosynthetic Energy Storage Efficiency, Determined by Photoacoustics. - *Open Journal of Marine Science* 1: 43-49.
57. Zastrow, C. (2001): Photoacclimation of the diatom *Asterionellaformosa* in a simulated vertically mixed water column. - The University of Wisconsin, Milwaukee.