

SUPPORTING MATERIALS

Operationally defined mercury (Hg) species can delineate Hg bioaccumulation in mangrove sediment systems: A case study

Kartheek Chennuri^a Parthasarathi Chakraborty^{a,b*}, Saranya Jayachandran^b, Sandip Kumar Mohakud^a, Ishita, Ishita^a, Darwin Ramteke^a, Prasad Pramod Padalkar^b, Prakash C. Babu^a and Korupolu Raghu Babu^c

^{a*} Geological Oceanography Division, CSIR-National Institute of Oceanography, Dona Paula, Goa 403004, India.

^{b*} Centre for Oceans, Rivers, Atmosphere and Land Sciences, Indian Institute of Technology Kharagpur, Kharagpur, West Bengal 721302, India.

*Corresponding Author: email: pchak@coral.iitkgp.ac.in Phone: 91-3222-281822

^c Department of Engineering Chemistry, Andhra University, Visakhapatnam, Andhra Pradesh-530003

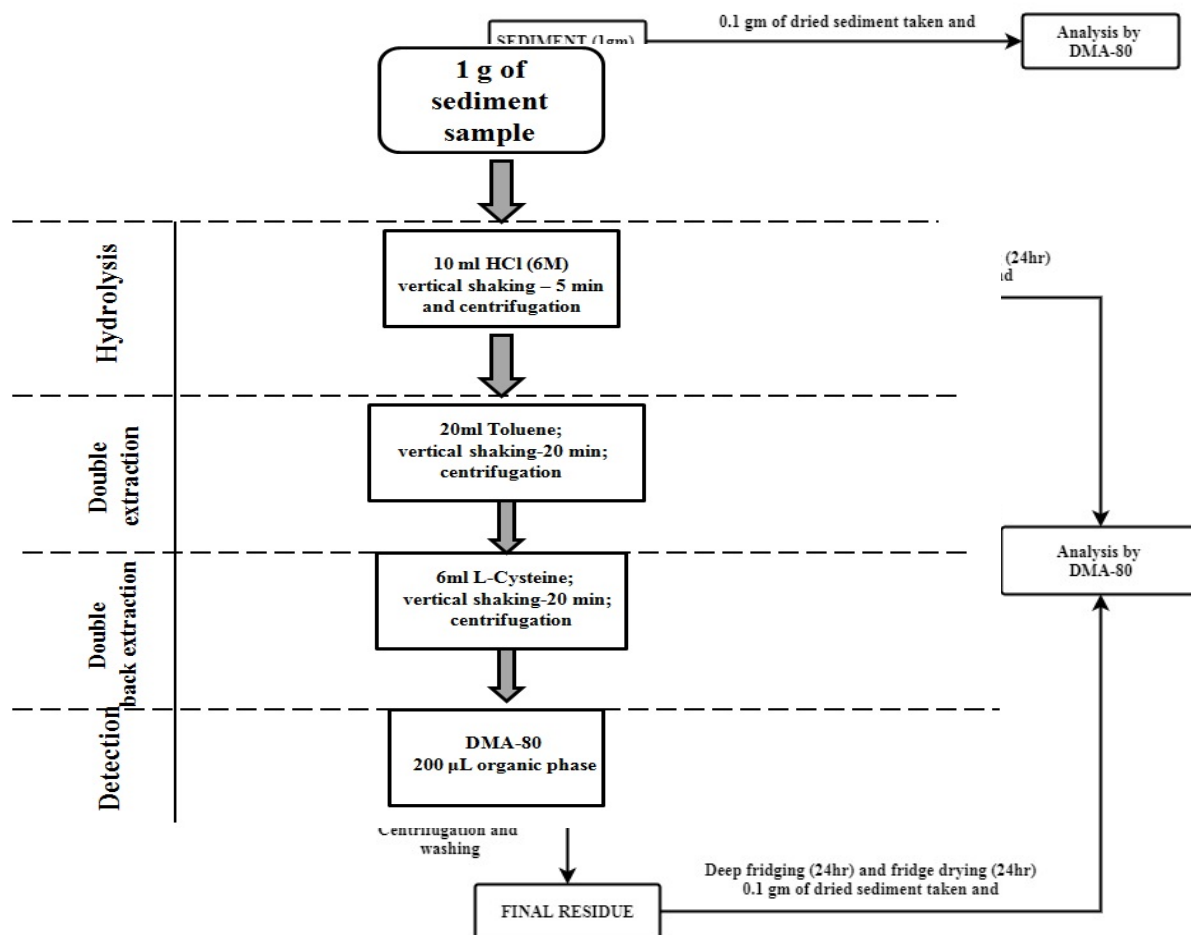


Figure SM 1: The schematic diagram of the BCR protocol for Hg fractionation study in mangrove sediments.

Figure SM 2: The schematic diagram of the MeHg extraction protocol.

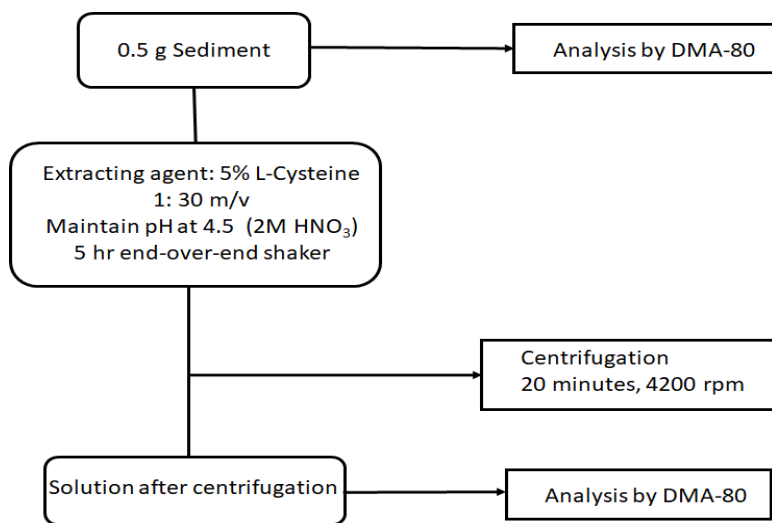


Figure SM 3: The schematic diagram of the L-cysteine extractable sedimentary Hg