

Author Version of : PLOS One, vol.15(3); 2020; Article no: e0220420

Morphological and molecular evidence for first records and range extension of the Japanese seahorse, *Hippocampus mohnikei* (Bleeker 1853) in a bay-estuarine system of Goa, central west coast of India

Sushant Sanaye¹, Rakhee Khandeparker¹, RayadurgaAnantha Sreepada^{1*}, MamathaSinganahalli Shivaramu¹, HarshadaKankonkar¹, Jayu Narvekar², Mukund Gauthankar¹

¹Aquaculture Laboratory, Biological Oceanography Division, CSIR-National Institute of Oceanography, Dona Paula, Goa-403 004, India

²Physical Oceanography Division, CSIR-National Institute of Oceanography, Dona Paula, Goa-403 004, India

* Corresponding author

E-mail: sreepada@nio.org(RAS)

Abstract

Accurate information of taxonomy and geographic range of seahorse species (genus *Hippocampus*) is the first step in preparing threat assessments and designing effective conservation measures. Here, we report first records and a range extension of the Japanese seahorse, *Hippocampus mohnikei* (Bleeker, 1853) from the Mandovi estuarine ecosystem of Goa, central west coast of India (CWCI) based on morphological and molecular analyses. The morphometric and meristic traits, particularly short snout (29–35% head length), double cheek spine, low coronet, long tail (51.2–57.9% of standard length), 11 trunk rings, 37–39 tail rings, 15–16 dorsal and 12–14 fin rays observed in four collected specimens matched with the reported key diagnostic morphological criteria of vouchered specimens of *H. mohnikei*. The seahorse mitochondrial cytochrome oxidase subunit I (COI) and cytochrome *b* (Cyt *b*) genes were partially sequenced for conclusive genetic identification of the species under study. Molecular analysis showed that all four individuals clustered together suggesting a monophyletic lineage. Using the maximum similarity with GenBank database, maximum likelihood network and subsequent morphological analysis, the identity of the collected seahorse species was reconfirmed as *H. mohnikei*. With this new report, the geographic range of *H. mohnikei* extended significantly to the west from its previously known range. This new sighting of *H. mohnikei* could indicate a long-distance dispersal facilitated by the prevailing oceanic circulation in the Indo-Pacific region or increased habitat suitability in bay-estuarine systems of Goa, CWCI. Comparison of the pair-wise genetic distances (Kimura 2-parameter) based on COI and Cyt *b* sequences revealed that the specimens examined in this study are genetically closer to *H. mohnikei* populations from Vietnam and Thailand than they are to those in Japan and China. To test the hypothesis whether *H. mohnikei* are vagrants or

previously unreported established population, long-term inter-annual sampling and analyses are warranted.

Introduction

Seahorses (Syngnathiformes; Syngnathidae) belonging to the single genus, *Hippocampus* (Rafinesque, 1810) are a fascinating and remarkable group of fishes with their unusual body shape and their biology, with males incubating the fertilized eggs in a brood pouch[1]. They are small, cryptic, and sedentary marine fishes that occur worldwide in shallow temperate to tropical waters in a wide variety of habitats, including seagrass beds, estuaries, coral and rocky reefs and mangroves [2–4]. Their remarkable ability to camouflage with structurally complex habitats further reduces the risk of predation[5], while providing stealth for prey capture[6]. However, these biological traits often also make them challenging for scientists to research and quantify. .

The primary step in preparing threat assessments and designing effective conservation of seahorse populations is highly dependent on the precise identification of individual species in and beyond known geographic distributions [7]. Out of 44 recognized seahorse species (Genus *Hippocampus*) throughout the world [8], *H. kelloggi*, *H. kuda*, *H. spinosissimus* and *H. trimaculatus* are common in Indian coastal marine waters [9,10]. In addition, sightings based on morphological identification of single specimens of *H. mohnikei* from Palk Bay, southeastern India[11], *H. borboniensis*[12] and *H. montebelloensis*[13] from the Gulf of Mannar, southeast coast of India and *H. camelopardalis* from the Gulf of Kachchh, northwest coast of India [14] have been reported. Another seahorse species, *H. hirtix*, is also suspected to occur in Indian coastal waters [15]. The validity of *H. borboniensis* and *H. montebelloensis* as separate species, however, is currently under revision due to their synonymy with *H. kuda* and *H. zebra*, respectively[16].

The utility of morphological traits commonly used in diagnosis of *Hippocampus* spp. is quite challenging as they lack certain key physical features (e.g. pelvic and caudal fins), and have high variability in body proportion, color (camouflage) and skin filaments, fin-ray and trunk-ring numbers; any of these traits might overlap between species [3,17]. On the other hand, molecular methods have proved helpful in resolving morphologically challenging seahorse taxonomy [16,18], phylogenetic relationships within the genus *Hippocampus* [19,20], natural species boundaries [21–23] and genetic variability [22,24] of many seahorse species. An integrated approach combining morphological and genetic analyses [25] would aid in the management of demographically separate populations as independent units and allow international legal mechanisms and international agreements such as the Convention on International Trade in Endangered Species (CITES) to work effectively [26].

Generally, seahorses are sedentary fishes with typically small home ranges and patchy distribution in sheltered areas such as seagrasses and seaweeds [2,27,28]. However, instances of limited migrations by seahorses in search of proper habitat, food or holdfasts have been reported [28,29]. Evidence of long-distance dispersal of seahorse species via rafting (floating debris and seaweeds) [2,12,30] and subsequent colonization [21] have also been documented. The role of oceanic currents facilitating long-distance dispersal and range expansion of many seahorse species has also been highlighted [31–36].

The Japanese or Lemur-tail seahorse, *Hippocampus mohnikei* (Bleeker, 1853) is a small coastal seahorse (5–8 cm) inhabiting seagrasses, mangroves, oyster beds and mussel farms [37]. Original records indicated that the distribution of *H. mohnikei* is restricted or native to the coastal waters around Japan and Vietnam [17,38–40]. However, new records of *H. mohnikei* from Cambodia, Malaysia, China, Korea, Thailand and Vietnam [37], along with recently published studies from southeastern India [11] and Singapore [41], have greatly expanded the known geographical range of *H. mohnikei* within Southeast Asia. As a

consequence of suspected reduction in population size to the tune of >30% over the past 10 years due to fisheries exploitation[37,42–44], the status of *H. mohnikei* in the IUCN Red List of Threatened Species has been listed as 'Vulnerable' [45].

A probable specimen of *H. mohnikei* along the central west coast of India (CWCI) was recorded in February 2017 when a fisherman posted a picture of seahorse incidentally caught as bycatch in gill net operated in the Chapora estuary, Goa (India) (15.6120° N, 73.7506° E) on social media [S1 Fig] which was suspected to be an adult male of *H. mohnikei*. Sustained follow-up surveys for its occurrence in the surrounding environs of the Chapora estuary did not yield in any further specimens. Subsequently, four sub-adult specimens of *H. mohnikei*—hitherto sighted only from southeast coast of India [11], caught incidentally as bycatch in bag net fisheries during July, 2018 in the Mandovi estuarine system, Goa, CWCI have been examined here.

This contribution describes the first records of *H. mohnikei* from the western coastal India. To test further the hypothesis that the morphologically identified seahorse species is *H. mohnikei*, two mitochondrial DNA gene regions (loci), cytochrome oxidase subunit I (COI) and cytochrome *b* (Cyt *b*) were partially sequenced for reconfirmation. The potential role of ocean currents on the range expansion of *H. mohnikei* to north-western Asia have also been discussed. In the wake of the vulnerability of seahorse populations to threats such as habitat alteration/destruction and fishing pressure globally, the present sighting of *H. mohnikei* in a bay-estuarine system of CWCI is of considerable conservation and biogeographic significance.

Materials and Methods

Collection site and seahorses

The locality (Brittona, Goa, India, 15.3059°N, 73.5073°E, Fig 1) at which the examined seahorse specimens were collected is a shallow water littoral environment in close proximity to the mangrove-dominated Chora Island in the Mandovi estuary, CWCI. The currents are largely tide dominated, the tides being semi-diurnal with a mean amplitude of 1.3 m. Currents are also influenced by the large seasonal freshwater influx [46] during the summer monsoon season (June to September). Temporal variations in abiotic and biotic factors influenced by monsoonal precipitation and seasonal upwelling render the collection location as one of the most ecologically complex ecosystems [47,48]. Significant lowering of salinity occurs when the freshwater discharge is at its maximum during monsoon. During the post- and pre-monsoon periods, the salinity at the surface and bottom remains high (~25 ppt). The bottom topography at the collection site is muddy and comprises mainly silt and clay with rich organic matter content [49]. The collection site is reported to harbor rich and diverse fishery resources and its importance in supporting the life history stages of several marine teleosts has been well-documented [50].

The present report is based on four specimens of *H. mohnikei* (females, MK1 and MK2; males, MK3 and MK4; Fig. 2. and Fig. 3) that were incidentally caught as bycatch in bag nets attached to fixed stakes (total length, 25 m; mouth length, 5 m; cod end mesh size, 10 mm) operated at a depth of ~6 m in the Mandovi estuary during July 2018. Dead seahorses landed as bycatch in bag nets attached to stakes operated by local fishermen in the estuarine system formed the study material. No live seahorses were specifically caught for the present study. Fin clips from these dead seahorses were used for molecular analysis. Since, the present study did not involve any experimentation with live specimens, the approval of the ethics committee for the usage of live animals for experiments is therefore inconsequential.

Morphological analysis

Before subjecting them to a detailed analysis of morphological characteristics, seahorse specimens were carefully photographed (Nikon D7200, Japan) and sexed via observation of presence or absence of brood pouch. Morphometric measurements and meristic counts were carried out following standardized protocols [15,17,51]. Morphometric characters such as height (Ht, linear distance from the top of the head to the tip of the stretched tail), head length (HL), trunk length (TrL), tail length (TaL) and standard length (SL = HL+TrL+TaL), were measured. Measurements of snout length (SnL), ratio of head/snout lengths (HL/SnL), snout depth (SnD), head depth (HD), pectoral fin base length (PL) and dorsal fin base length (DL) were also conducted. All measurements were taken with the help of digital caliper to 0.1 mm and repeated to ensure accuracy. Trunk depths on 4th (TD4) and 9th (TD9) trunk rings were measured. The presence/absence of spines and dermal appendages was also noted. Meristic characters such as the number of trunk rings (TrR), tail rings (TaR), dorsal fin rays (DF), pectoral fin rays (PF) and anal fin rays (AF) were counted under stereo zoom microscope (Olympus SZX7, Japan) and the values were confirmed by triplicate counting. Brood pouch dimensions were measured in all male specimens.

Morphological identification of the collected seahorse specimens from Goa was based on comparison of the salient morphometric and meristic characters with the reported diagnostic features for different seahorse species [15,17,25]. For further confirmation, the morphological data of Goa specimens was compared with all vouchered specimens of *H. mohnikei* [11,15,25,52,53]. The voucher specimen collected from Goa is deposited in the national marine biodiversity repository at CSIR-National Institute of Oceanography, Goa, India (deposition ID: NIO1015/19).

Statistical analysis

Morphological data of *H.mohnikei* and two other commonly occurring seahorse species (*H. kuda* and *H. trimaculatus*) in the coastal waters of India was evaluated by one-way analysis of variance (ANOVA) followed by the Duncan's multiple-range test [54].The level of significance was tested at 5.0%, represented as $P < 0.05$. A comparison of morphological characters and meristic features of *H. mohnikei* (n = 4) with *H. kuda* (n = 10) and *H. trimaculatus* (n = 10) was made through principal component analysis (PCA). PCA was employed in which factor loadings based on components were used to determine the morphometric factors using PRIMER software (version 6) after square-root transformation.

Molecular analysis: DNA extraction, PCR amplification and sequencing

For gene-based phylogenetic analysis, fragments of dorsal fin from freshly landed dead seahorses were removed and preserved in 95% ethanol at -20°C until subjected to DNA extraction. DNA extraction was carried out as described by Kumar et al. with a few modifications [55]. In brief, lysis buffer and sodium dodecyl sulfate were added to the fin tissue and vortexed. Further, RNase and Proteinase K were added to the mixture and incubated for 15–20 minutes at room temperature. After the incubation period, the DNA was extracted using phenol:chloroform:isoamyl alcohol (25:24:1) mixture. Precipitated DNA was washed with 70% cold ethanol. The gel electrophoresis was performed to confirm the quality and integrity of DNA.

The seahorse mitochondrial cytochrome oxidase subunit I (COI) gene was amplified using primers, forward (5'TCAACTAATCACAAAGACATCGGCAC3') and reverse (5'ACTTCGGGGTGCCCAAAGAATC3') [56]. Similarly, the mitochondrial cytochrome *b* (*Cytb*) gene fragment was also amplified using PCR with seahorse-specific primers, forward (5'AACYAGGACYAATGRCTTGA3') and reverse (5'GCASWAGGGAGGRKTTTAAC3') [43]. Reactions were carried out in a thermal cycler (Veriti® 96-well Thermal Cycler,

Applied Biosystems, CA, USA). The amplification of COI and *Cytb* genes was carried out by following cycling conditions as described by Lourie et al. with few modifications; an initial denaturation step of 95°C for 2 minutes followed by 39 cycles of 94°C for 30s, 55°C for 30s, 72°C for 1 minute and a final extension at 72°C for 2 minutes [57]. Amplified PCR products of both COI and *Cytb* genes were verified on agarose gel (1.5%) and purified for sequencing using PCR purification kit (Sigma Aldrich, USA). Gene sequence of the PCR products was determined using a taq dye deoxy terminator cycle sequencing kit (PerkinElmer, CA, USA) following supplier's protocols. Sequencing reaction products were analyzed on 373 automated DNA Sequencer (Model 313 xl; Applied Biosystems, CA, USA). Amplification of the mitochondrial COI and *Cytb* genes resulted in fragments of 609 bp and 639 bp, respectively.

Phylogenetic analysis

Nucleotide sequences generated for four specimens collected from Goa (MK1, MK2, MK3 and MK4) were deposited in GenBank under accession numbers MN595216, MN595218, MN595217 and MK330041.1 for COI and MN595213, MN595214, MN595215 and MK112274.2 for *Cyt b* genes, respectively). Sequence integrity and genetic affinity with known species was compared using the basic local alignment search tool (BLAST) of NCBI [58] (<http://www.ncbi.nih.gov/BLAST>). To complete the analysis, sequences of Goa specimens were aligned with 47 and 85 sequences of COI and *Cyt b* genes, respectively of all vouchered specimens of *H. mohnikei* retrieved from the GenBank database (accession numbers shown in S1 Table). The mitochondrial COI and *Cytb* gene sequences were aligned using the ClustalW algorithm implemented in MEGA 7 [59]. To ascertain stable and reliable relationships among the seahorse species, phylogenetic trees, separately for COI and *Cyt b* genes were constructed through maximum likelihood (ML) method using K2P distances. The

analyses were performed in MEGA 7, and confidence levels were assessed using 1000 bootstrap replications. The alligator pipefish, *Syngnathoides biaculeatus* was used as an outgroup species. Genetic distance values are used to estimate intraspecies and interspecies kinships and also as a basis for phylogeny analysis. The degree of genetic divergence within *H. mohnikei* from different geographical locations (S1 Table) was assessed using Kimura 2-parameter (K2P) distance model [60] implemented in MEGA7 [59]. Codon positions included were 1st+2nd+3rd+noncoding. All ambiguous positions with alignment gaps and missing data were removed from the sequences (pair-wise deletion option).

Prevailing ocean circulation

The Indo-Pacific region (encompassing South China Sea, East China Sea, and southeastern Bay of Bengal including the Indian subcontinent) comes under the influence of strong seasonal monsoon wind reversal and associated reversals in the surface currents [61]. During the winter monsoon season (November to February), the surface circulation in the region indicates current pattern from east to west and the direction of the circulation reverses during the summer monsoon season (June to September). Considering the previous reported occurrences of *H. mohnikei* [37], the climatological currents in the region for the winter season which support a passive dispersal of marine fish species from east to west were considered for explaining the occurrence of *H. mohnikei* in Goa waters. Monthly mean climatology was prepared based on daily data on U (zonal) and V (meridional) components of geostrophic current velocities derived from Aviso merged product for the years, 2007–2017. Altimeter products by Ssalto/Duacs and distributed by Aviso+, with support from Cnes (<https://www.aviso.altimetry.fr>) were used. The climatological currents generated for the winter season (November to February) from 2007 to 2017 for the Indo-Pacific region are depicted in Fig. 4.

Results

Specimens examined

Colour of the head and body of freshly collected seahorse specimens (females, MK1 and MK2; males, MK3 and MK4; NIO1015/19) was dark brown to dark black. The entire body was covered with low spines and the coronet was observed to be short with five tiny projections. Two prominent cheek spines and double rounded spines below the eye (each on the either side of the head) were discernible in all four specimens. (Fig. 2 and Fig. 3.).

Morphological taxonomy

Measured height (Ht) and standard length (SL) of specimens varied between 39.2 and 54.2 mm (48.2 ± 6.5 mm) and 47.3 and 60.1 mm (54.95 ± 5.48 mm), respectively. TaL was observed to be relatively long compared to the TrL of the body. The ratio of the head length (HL) to snout length (SnL) of all four specimens varied between 3.2 and 3.5 (Table 1). Number of trunk rings (TrR) in all specimens were 11 whereas, the number of tail rings (TaR) varied narrowly between 37 and 39. The number of TrR supporting dorsal fin was two and the number of TaR supporting dorsal fin was counted to be one in all specimens. Number of dorsal fin pectoral fin and anal fin rays recorded were 15–16, 12–14 and 4, respectively. Slight enlargements, respectively at 1st, 4th, 7th and 10/11th TrR and 4th, 7/8th, 9/10th, 13/14th TaR were prominently discernible (Table 1).

Comparative morphology

We compared the morphological features of *H. mohnikei* with other two commonly occurring seahorse species, *H. kuda* and *H. trimaculatus* occurring in coastal waters of India (Table 2).

Fresh specimens of *H. kuda* was orange to dark brown with reddish spots over the body with single eye and cheek spine, rounded and backward curled coronet and deeper head and rounded or less developed body spines [15,16]. *H. trimaculatus* has three prominent black spots on the dorso-lateral surface of the first, fourth and seventh trunk rings [15,16] which are clearly absent in *H. mohnikei*. Single eye and hooked like cheek spine also observed in *H. trimaculatus*. Snout length (SnL) of *H. mohnikei* was shorter compared to the *H. kuda* and *H. trimaculatus*. These morphological characters clearly distinguish *H. mohnikei* from *H. kuda* and *H. trimaculatus* (Table 2).

PCA used to elucidate the factors contributing to morphological differences in *H. mohnikei*, *H. kuda* and *H. trimaculatus* showed that many morphometric and meristic characters play an important role in differentiating these species. Results of PCA analysis revealed that 11 morphometric and meristic characters integrated into two principal components (PC1 and PC2) which cumulatively contributed to 97% of total variance (S2 Table). The PC1 which explained 81% of total variation consisted of morphometric characters such as SL, TaL, TD4, HL, TD9, TrL, HD, SnL and SnD while, the PC2 which explained 16% of total variation consisted of the TaR and DF. The derived ordination diagram after plugging standardized morphological data of all individuals of three seahorse species into PCA is depicted in Fig. 5. PCA ordination diagram showed that three seahorse species were clustered out distinctly in ordination space. Therefore, based on comparison of morphological traits [15,16,25] and the results of PCA, the identity of seahorse specimens collected from Goa was confirmed as *H. mohnikei*.

Morphological measurements revealed that all the four Goa specimens are consistent and congruent with the salient morphological descriptions for type specimens of *H. mohnikei* reported by Lourie et al. [15,17,25] for specimens collected from Vietnam and Japan. Furthermore, meristic, morphometric, and key diagnostic morphological character

comparisons from vouchered specimens of *H. mohnikei*[11,15,25,52,53], reconfirmed the identity of seahorse specimens collected from Goa as *H. mohnikei* (Table 3).

Phylogenetic analysis and genetic distance

PCR for the mitochondrial COI and Cytb genes of Goa seahorse specimens resulted in 609 bp and 639 bp amplicons, respectively. Maximum likelihood (ML) phylogenetic analysis were performed using K2P distances with sequences of COI and Cytb genes of seahorse specimens from Goa (MK1, MK2, MK3 and MK4) with all downloaded sequences of vouchered *H. mohnikei* from GenBank (S2 Table). ML trees of Goa seahorse specimens (GenBank accession numbers, MK330041.1, MN595216.1, MN595217.1 and MN595218.1 for COI gene; GenBank accession numbers, MK112274.2, MN595213.1, MN595214.1 and MN595215.1 for Cyt *b* gene) showed that all four individuals clustered together suggesting a monophyletic lineage (Fig. 6 and Fig. 7). Furthermore, sequences of COI and Cyt *b* genes of Goa specimens, respectively showed maximum phylogenetic similarities with *H. mohnikei* (GenBank accession numbers GQ502157.1) (GenBank accession numbers: EU179923.1 and EU179924.1) strongly supported by high bootstrap values of >95% (Fig. 6 and Fig. 7).

Genetic distance describes the kinship distance within and between species. Calculated pair-wise genetic distance (K2P) values based on COI and Cyt *b* sequences of *H. mohnikei* from Goa and other localities (Japan, Korea, China, Vietnam and Thailand) revealed that *H. mohnikei* from Goa show least genetic distances of 0.7% for both COI and Cyt *b* genes with populations of *H. mohnikei* from Vietnam (COI) and Thailand (Cyt *b*), respectively (Table 4 and Table 5). In contrast, Goa specimens showed highest genetic distances of 1% for COI and 7% for Cyt *b* genes with populations of *H. mohnikei* from China and Japan, respectively.

Ocean circulation

As seen from Fig. 4 that the circulation in the Indo-Pacific region shows a large-scale flow moving from the East China Sea to the South China Sea. From the South China Sea, the major part of the flow turns southeastward entering into the Java Sea and a small part turns northwestward to eastern Bay of Bengal (BoB) and the Andaman Sea through Malacca Strait. From eastern BoB, the surface waters flow westward as a part of the north equatorial current (NEC). On encountering the coast of Sri Lanka, a part of the NEC move northward into the northern BoB, while the rest moves westward and into the southern Arabian Sea, south of Sri Lanka. The NEC feeds into the wintertime west India coastal current (WICC) and moves waters from NEC towards north into the Arabian Sea along its eastern boundary.

Discussion

The geographic range of *Hippocampus mohnikei* is still unresolved as Lourie et al [15,16] confirmed the nativity of this species to Japan and Vietnam and likely extending throughout the South China Sea and the Gulf of Thailand [16,17,25]. New records on the occurrence of *H. mohnikei* from many other locations beyond on its native range in north- and south-eastern coastal waters of Asia [11,37,41,44,56,62] suggest its significant extended distribution in the Indo-Pacific region (Fig. 8). Records of *H. mohnikei* in the Palk Bay, southeast coast of India [11] is to date the known range limit towards the west. In southeastern Asian coastal waters, *H. mohnikei* has been reported from Singapore [41] as well as from Cambodia, Malaysia, Thailand and Vietnam [37]. In northeast Asia, *H. mohnikei* is reported from China [44,56] and South Korea [62,63].

The present report on the occurrence of *H. mohnikei* in a bay-estuarine system of Goa, CWCI as confirmed by both morphological and molecular analysis represents a significant

westward expansion compared to the previously known geographic range of this species [37]. Since the reporting of *H. mohnikei* solely based on morphological characters from the Palk Bay, southeast coast of India [11], no further sightings of this species have been reported from coastal marine waters of India. Therefore, a comparison of genetically distinct populations of *H. mohnikei* inhabiting native (Japan and Vietnam) and extended ranges in the Indo-Pacific region (Fig. 8) with Goa specimens gains significance. Lourie et al. reported that a Vietnamese specimen of *H. mohnikei* was genetically distinct from *H. mohnikei* from Japan [16,25].

A maximum likelihood (ML) tree constructed of Goa specimens with all vouchered specimens of *H. mohnikei* based on COI gene using K2P distances showed maximum phylogenetic proximity with a specimen from Vietnam (GenBank accession number, GQ502157.1) (Fig. 6). On the other hand, ML tree constructed with sequences of Cyt *b* gene of Goa specimens showed maximum genetic similarities with *H. mohnikei* from Thailand (GenBank accession numbers, EU179923.1 and EU179924.1) (Fig. 7). In both ML trees of COI and Cyt *b* genes, phylogenetic proximity of all four Goa individuals with >95% bootstrap support thus confirming the taxonomic identity of Goa specimens as *H. mohnikei*. Furthermore, a comparison of pair-wise genetic distance values (K2P) based on sequence COI (Table 4) and Cyt *b* (Table 5) genes showed that Goa specimens showed least genetic distance with populations of *H. mohnikei* from Vietnam (K2P value, 0.7%) and Thailand (K2P value, 0.7%), respectively. In contrast, Goa specimens showed highest genetic distances of 1% for COI and 7% for Cyt *b* genes with populations of *H. mohnikei* from China and Japan, respectively. Similar high pair-wise K2P values of sequences of Cyt *b* between *H. mohnikei* populations from the Gulf of Thailand and those from China (13.54–14.46%) and Japan (14.42–14.79%) have been recently reported [64].

A comparative assessment of K2P values of the present study with those from Vietnam [65] and Gulf of Thailand [64], respectively for COI and Cyt *b* suggest that *H. mohnikei* populations from Goa, Vietnam and the Gulf of Thailand might share a similar genetic identity and genetically distinct from those from China and Japan. Also, a possible genetic differentiation in populations of *H. mohnikei* inhabiting coastal marine waters of northeastern Asia (Japan, Korea and China) and southeastern Asia (Vietnam, Thailand, Cambodia, Malaysia, Singapore and India) may not be ruled out. Furthermore, least genetic divergence recorded between different populations of *H. mohnikei* (Goa vs Vietnam, COI gene) and (Goa vs. Thailand, Cyt*b* gene), the possibility of crypticity within *H. mohnikei* populations from these localities is ruled out by applying 2% threshold genetic divergence for assessing intra-specific differences [16]. In contrast, recent study by Panithanarak et al observed high genetic variance between the populations of *H. mohnikei* from the Gulf of Thailand and China (13.54–14.46%) and Japan (14.42–14.79%) suggested the possibility of cryptic species within the known range of *H. mohnikei* [64]. Further studies, however, are necessary to assess the genetic variation within *H. mohnikei* populations in the entire Indo-Pacific region.

Recent studies have advanced our understanding of habitat associations of *H. mohnikei* compared to what has been described in the IUCN Red List Assessment [45]. Previously, *H. mohnikei* was reported only in association with seagrass beds in Japan and in an estuary in Vietnam [16,25]. Association of *H. mohnikei* populations with seagrass beds (*Zostera* spp.) in Korea [62,63], Japan [66] and China [44] has been reported. Whereas the specimen reported from Palk Bay, southeastern India [11] was associated with two other additional genera of seagrass species (*Halophila* and *Thalassia*). Recently, published data on the habitat preferences of *H. mohnikei* from Southeast Asia [37] indicate its association with seagrass beds of *Cymodocea* spp., *Enhalus* spp., *Halodule* spp., *Halophila* spp., *Syringodium* spp. and

Thalassia spp. Furthermore, these authors also report the association of *H. mohnikei* with mangroves, oyster beds, mussel farms and sandy beaches, whereas, Lim reported its occurrence in association with seaweeds in Singapore [41]. From these studies, it is evident that *H. mohnikei* occupies a wide variety of habitats.

All previous reports on the habitat descriptions of *H. mohnikei* were located in the coastal waters and bay-estuarine systems in the depth range of 0–10 m [11,17,25,37,44,62]. Interestingly, the occurrence of small juveniles of *H. mohnikei* in association with highly dense live prey organisms in the offshore waters of Japan has also been reported [39]. The present report of *H. mohnikei* is based on specimens caught as an incidental catch in bag nets fixed to the stakes operated in the Mandovi estuary, Goa. Although precise information on the habitat of *H. mohnikei*, could not be ascertained, it is worth describing the surrounding environs at the site of collection. Predominantly, the estuarine stretches of the River Mandovi have dense mangrove coverage and extensive oyster beds [67] and patches of seagrass, *Halophila ovalis* and *H. beccarii* [68]. The channel network of Mandovi estuary is characterized by islands (Chorao, Divar and Vanxim) and many sheltered areas interspersed with dense mangrove ecosystem. The present occurrence of *H. mohnikei* in a bay-estuarine system of Goa is not quite surprising as these are the typical habitats where this species has been previously reported. For ascertaining habitat shift by geographically disconnected populations of *H. mohnikei*, further intense studies on habitat specificities of different life stages therefore, are warranted.

Food availability has been considered as one of the factors influencing the abundance and distribution of seahorses [20]. Zooplankton such as *Oithona davisae*, Calanoida and *Penilia avirostris* have been identified as the main prey organisms for juvenile and young *H. mohnikei* in Tokyo Bay [39], whereas the adults have been reported to prey upon mainly larger organisms such as gammarid and caprellid amphipods [63]. Nutrient-rich waters of the

Mandovi estuarine system sustain high primary productivity and abundance of zooplanktonic prey organisms such as copepods [69–71] which are essential for the survival and establishment of seahorse populations. Considering the prevailing environmental conditions, mangrove shelter and abundance of prey organisms, the likelihood of establishment and colonization of seahorse populations in these sheltered areas appears high.

Factors such as habitat, diet, and even anthropogenic activities are the main reasons cited for the migration of seahorses [72]. Furthermore, instances of seahorses for long distance dispersal by means of rafting along with seaweeds or any other suitable holdfast under the influence of ocean currents during juvenile stages have been documented [2,22]. A southward dispersal of *H. histrix* ~1800 km under the influence of East Australian Current in the Great Barrier Reef has been reported [33]. Furthermore, ~1100 km dispersal from the south to the northeast coast of India by *H. fuscus* under the influence of East India Coastal Current has been also reported [35]. A Direct evidence for passive long-distance dispersal of *H. trimaculatus* at Malacca Strait has been documented recently [36].

Newborn juveniles of many seahorse species undergo a pelagic phase (planktonic) ranging between two and six weeks depending on the species before they settle down into sessile habitats (benthos)[2,73]. Consequently, planktonic phase juveniles are likely to facilitate in widespread gene flow across geographically disconnected populations and resulting in genetic homogeneity [74]. The occurrence of small juveniles of *H. mohnikei* (15.1–45.5 mm) in association with highly dense live prey organisms in offshore waters of Japan [39] suggests that food availability is essential for sustaining survivorship of planktonic phase juveniles. Furthermore, a seasonal (warm and cold season) inshore-offshore migration by *H. mohnikei* populations inhabiting Chinese coast has been confirmed [56]. Higher passive dispersal capabilities of seahorse juveniles with floating debris, prey swirls and with seaweed rafts than adults has been reported[2,30,36]. It has been postulated that marine species with

greater longevity, free swimming and feeding (planktotrophic) larval phases have relatively high dispersal abilities and thus permit genetic exchange between populations [75]. It has been hypothesized that owing to lack of suitable settlement habitat (holdfasts) and or scarcity of larger food items may render larger non-settled juveniles of *H. mohnikei* to prolong their planktonic phase [39]. Therefore, an extension planktonic phase as observed in case of *H. mohnikei* juveniles in offshore waters of Tokyo Bay [39] may entail higher degree of passive dispersal under the influence of oceanic circulation, especially when they are attached to floating debris and algae.

The confirmed occurrence of four sub-adult specimens (Mandovi estuary) and suspected occurrence of an adult specimen of *H. mohnikei* in the proximately adjacent bay-estuarine ecosystem (Chapora estuary) of Goa, CWCI could be a consequence of either long-distance dispersal from Southeast Asian countries or stepping-stone mediated dispersal as revealed by oceanic currents circulation in the Indo-Pacific region. It is clearly seen from Fig. 4 that water mass from southeastern Asian coasts and east coast of India enters into the Arabian Sea as a result of winter circulation [61]. In the absence of geographical barriers between *H. mohnikei* populations of Goa and Southeast Asian countries, ocean currents flowing from regions where sightings of *H. mohnikei* may contribute to wide-spread dispersal. Therefore, it is plausible that oceanic currents may be aiding long-distance or stepping stone dispersal of *H. mohnikei* populations from different geographical locations such as Cambodia, Malaysia, Vietnam and Thailand [15,16,37,64], Singapore [41] and the Palk Bay, southeast coast of India [11] to the west coast of India.

Conversation with local fishermen who operate stake nets at the collection site revealed that sightings of seahorses are relatively more common during summer monsoon season than in non-monsoonal months. During the summer monsoon period, a number of rivulets and rivers connected to the Mandovi estuarine network discharge large amounts of

freshwater[76]. Consequently, it is possible that the rainwater discharge from sheltered areas—the preferred seahorse habitats, may force seahorses flow downstream along with currents due to their poor swimming abilities.

It is well known that the west coast of India comes under the influence of substantial coastal cold-water upwelling event during the summer monsoon season [47,76]. It has been reported that the survival and dispersal of tropical marine species are known to be impacted by a drastic decrease in water temperature associated with upwelling [77–79]. Consequently, seahorse populations in western coastal India might undergo seasonal fluctuations [22]. A significant decrease in abundance and diversity of demersal fishes during the summer monsoon in a bay-estuarine system of the Mandovi river has been documented [50]. As a consequence of the reduction in salinity and drop in temperature associated with monsoonal precipitation and upwelling, respectively the seahorse populations might face limitations in growth and recruitment along the west coast of India. Interestingly, unlike most subtropical seahorse species, the greater tolerance by native populations of *H. mohnikei* to cold water in the Western Pacific has been reported [31]. However, further temperature stress simulation studies are required to ascertain whether geographically disconnected populations of *H. mohnikei* also possess a similar trait or not.

Conclusions

Based on the new information presented in this paper, there is clear evidence that *H. mohniei* has expanded its natural and reported geographic range. Recognizing the potential of seahorses as a popular flagship species in estuarine conservation and sustainable management [1,80,81], significant westward range expansion of *H. mohnikei* is of considerable biogeographic and conservation importance. Intriguingly, the possibility of *H. mohnikei* originating in India and subsequent dispersal to the east cannot be ruled out. Although there is

no published evidence to show that *H. mohnikei* originated in Japan/China, the original type specimens studied were however, from Japan and Vietnam. At the same time, it may be plausible that *H. mohnikei* might be present in other localities, but has not been reported. Further intense sampling and rigorous molecular analysis of *H. mohnikei* populations along the Indian coast and throughout its range would be therefore required to confirm whether these are vagrants or a previously unreported, established population.

Acknowledgements

The authors are grateful to Prof. Sunil Kumar Singh, Director, CSIR-National Institute of Oceanography, Goa (India) for encouragement and facilities. Thanks are due to local fisherman Mr. Harish Halarnkar for providing seahorse specimens. Thanks are also due to Dr. Mani Murali and Mr. Devanand Kavlekar for their help in preparing the maps. We would like to deeply thank Dr. Qiang Lin for sharing the morphometric data of *Hippocampus mohnikei* for comparison. The authors are thankful to Riley Pollom and Dr. Graham Short and two anonymous reviewers for their critical and constructive comments for improving the quality and presentation of the manuscript. This represents contribution No. xxxx of the CSIR-National Institute of Oceanography, Goa (India).

Author Contributions

Conceived and designed the experiments, writing-original draft: SVS, RAS, RDSK; Performed the experiments: SVS, MSS, HTK, MG; Data curation and formal analysis: SVS, RAS, MSS, RDSK, JN; Contributed reagents/materials/analysis tools: JN, HTK, MG; Visualization, Writing - review & editing: RAS, SVS, RDSK.

References

1. Sreepada RA, Desai UM, Naik S. The plight of Indian seahorses: Need for conservation and management. *Curr Sci*2002; 82: 377–378.
2. Foster SJ, Vincent ACJ. Life history and ecology of seahorses: implications for conservation and management. *J Fish Biol* 2004; 65: 1–61.
3. Kuitert RH. *Seahorses and Their Relatives*. Aquatic Photographics, Seaford, Australia; 2009.
4. Froese R, Pauly D. FishBase. www.fishbase.org. Downloaded on 10/2018.
5. Harasti D, Martin-Smith K, Gladstone W. Ontogenetic and sex-based differences in habitat preferences and site fidelity of White's seahorse *Hippocampus whitei*. *J Fish Biol* 2014;85: 1413–1428.
6. Hellyer C, Harasti D, Poore A. Manipulating artificial habitats to benefit seahorses in Sydney Harbour, Australia. *Aquat Conserv Mar Fresh Ecosyst* 2011;21: 582–589.
7. Short G, Harasti D, Hamilton H. *Hippocampus whitei* Bleeker, 1855, a senior synonym of the southern Queensland seahorse *H. procerus* Kuitert, 2001: molecular and morphological evidence (Teleostei, Syngnathidae). *ZooKeys* 2019; 824: 109–133.
8. IUCN Seahorse, Pipefish and Stickleback Specialist Group(2019). <https://www.iucn-seahorse.org> (downloaded on 01/11/2019).
9. Salin KR, Mohankumaran NC. Resources and biodiversity of seahorses and the need for their conservation in India. *Aquacult Asia*2006;10: 3–8.
10. Murugan A, Dhanya S, Rajagopal S, Balasubramanian T. Seahorses and pipefishes of the Tamil Nadu coast. *Curr Sci*2008;95: 253–260.
11. Thangaraj M, Lipton AP. Occurrence of the Japanese seahorse *Hippocampus mohnikei* Bleeker 1854 from the Palk Bay coast of southeastern India. *J Fish Biol* 2007;70: 310–312.

12. Krishnan TS, Kuitert RH, Patterson J. Occurrence of western Indian Ocean seahorse, *Hippocampus borboniensis* Dumeril, 1870, in the Gulf of Mannar, Southeastern India. *Ind J Geo-Mar Sci* 2011; 40: 642–644.
13. Yogeshkumar JS, Geetha S. A new species of *Hippocampus montebelloensis* (Family: Syngnathidae) from the southeast coast of India. *Int J Plant Anim Env Sci* 2012; 2: 56–58.
14. Subburaman S, Murugan A, Goutham S, Kaul R, Prem Jyothi PVR, Balasubramanian T. First distributional record of giraffe seahorse, *Hippocampus camelopardalis* Bianconi 1854 (Family Syngnathidae) from Gulf of Kachchh waters, north west coast of India. *Indian J Geo-Mar Sci* 2014; 43: 408–411.
15. Lourie SA, Foster SJ, Cooper EWT, Vincent ACJ. A Guide to the Identification of Seahorses. Project Seahorse and TRAFFIC North America; 2004.
16. Lourie SA, Pollam RA, Foster SJ. A global revision of the seahorses *Hippocampus* Rafinesque 1810 (Actinopterygii: Syngnathiformes): taxonomy and biogeography with recommendations for further research. *Zootaxa* 2016; 4146: 1–66.
17. Lourie SA, Vincent ACJ, Hall HJ. Seahorses: an identification guide to the world's species and their conservation. Project seahorse, London, UK; 1999.
18. Silveira RB, Siccha-Ramirez R, Silva JRS, Oliveira C. Morphological and molecular evidence for the occurrence of three *Hippocampus* species (Teleostei: Syngnathidae) in Brazil. *Zootaxa* 2014; 3861: 317–332.
19. Casey SP, Hall HJ, Stanley HF, Vincent ACJ. The origin and evolution of seahorses (genus *Hippocampus*): a phylogenetic study using the cytochrome b gene of mitochondrial DNA. *Mol Phylogenet Evol* 2004; 30: 261–272.

20. Wang X, Han X, Zhang Y, Liu S, Lin Q. Phylogenetic analysis and genetic structure of the seahorse, *Hippocampus fuscus* from the Arabian and Red Sea based on mitochondrial DNA sequences. *Mitochondrial DNA A* 2019; 30: 165–171.
21. Lourie SA, Green DM, Vincent ACJ. Dispersal, habitat differences and comparative phylogeography of South East Asian seahorses (Syngnathidae: *Hippocampus*). *Mol Ecol* 2005;14: 1073–1094.
22. Teske PR, Hamilton H, Palsboll PJ, Choo CK, Gabr H, Lourie SA et al. Molecular evidence for long-distance colonization in an Indo-Pacific seahorse lineage. *Mar Ecol Prog Ser* 2005; 286: 249–260.
23. Boehm JT, Waldman J, Robinson JD, Hickerson MJ. Population genomics reveals seahorses (*Hippocampus erectus*) of the western mid-Atlantic coast to be residents rather than vagrants. *PloS One* 2015; 10: e0116219. <http://dx.doi.org/10.1371/journal.pone.0116219>.
24. Saarman NP, Louie KD, Hamilton H. Genetic differentiation across eastern Pacific oceanographic barriers in the threatened seahorse *Hippocampus ingens*. *Conserv Genet* 2010; 11: 1989–2000.
25. Lourie SA, Pritchard JC, Casey SP, Ky TS, Hall HJ et al. The taxonomy of Vietnam's exploited seahorses (family Syngnathidae). *Biol J Linn Soc* 1999; 66: 231–256.
26. Woodall LC, Otero-Ferrer F, Correia M, Curtis JMR, Garrick Maidment N et al. A synthesis of European seahorse taxonomy, population structure, and habitat use as a basis for assessment, monitoring and conservation. *Mar Biol* 2018; 165: 1–19.
27. Curtis JMR, Vincent ACJ. Life history of an unusual marine fish: survival, growth and movement patterns of *Hippocampus guttulatus* Cuvier 1829. *J Fish Biol* 2006; 68: 707–733.

28. Caldwell I, Vincent ACJ. A sedentary fish on the move: effects of displacement on long-snouted seahorse (*Hippocampus guttulatus* Cuvier) movement and habitat use. *Environ Biol Fish* 2013; 96: 67–75.
29. Correia M, Caldwell IR, Koldewey HJ, Andrade JP, Palma J. Seahorse (Hippocampinae) population fluctuations in the Ria Formosa Lagoon, south Portugal. *J Fish Biol* 2015; 87: 679– 690.
30. Luzzatto DC, Estalles ML, Diaz De Astarloa JM. Rafting seahorses: the presence of juvenile *Hippocampus patagonicus* in floating debris. *J Fish Biol* 2013; 83: 677–681.
31. Han SY, Kim JK, Tashiro F, Kai Y, Yoo JT. Relative importance of ocean currents and fronts in population structures of marine fish: a lesson from the cryptic lineages of the *Hippocampus mohnikei* complex. *Mar Biodiv* 2019; 49: 263–275.
32. Luzzatto DC, Pujol MG, Figueroa D, Diaz De Astarloa JM. The presence of the seahorse *Hippocampus patagonicus* in the deep waters: additional evidence of the dispersive capacity of the species. *Mar Biodivers Rec* 2014; 7: e71.
33. Harasti D. Range extension and first occurrence of the thorny seahorse *Hippocampus histrix* in New South Wales, Australia. *Mar. Biodivers Rec* 2015; 8: <https://doi.org/10.1017/S1755267215000263>.
34. Harasti D. Southward range extension of the great seahorse (*Hippocampus kelloggi* Jordan and Snyder, 1901) in Australia. *J Appl Ichthyol* 2017; 1–3 <https://doi.org/10.1111/jai.13414>.
35. Mahapatro D, Mishra RK, Panda S. Range extension of a vulnerable Sea horse *Hippocampus fuscus* (Actinopterygii: Syngnathidae) on the north-eastern Bay of Bengal coast. *Mar Biodivers Rec* 2017; 10:6. DOI 10.1186/s41200-017-0108-z.

36. Wong NLWS, The JC. Direct observation of drifting juvenile seahorse *Hippocampus trimaculatus* (Leach, 1814) beneath the offshore surface at Malacca Strait. *Check List* 2017;13: 993–996.
37. Aylesworth L, Lawson LM, Laksanawimol P, Ferber P, Loh TL. New records of the Japanese seahorse *Hippocampus mohnikei* in Southeast Asia lead to updates in range, habitat and threats. *J Fish Biol* 2016; 88: 1620–1630.
38. Masuda H, Amaoka K, Araga C, Uyeno T, Yoshino T. *The Fishes of the Japanese Archipelago*. Tokyo: Tokai University Press; 1984.
39. Kanou K, Kohno H. Early life history of a seahorse, *Hippocampus mohnikei*, in Tokyo Bay Japan. *Ichthyol Res* 2001; 48: 361–368.
40. Suda Y, Inoue T, Nakamura M, Masuda N, Doi H, Murai T. Nearshore ichthyofauna in the intermediate sandy beach, Doigahama Beach, Yamaguchi Prefecture, Japan. *J Nat Fish Univ* 2004; 52: 11–29.
41. Lim K. New Singapore record of the seahorse, *Hippocampus mohnikei*. *Singapore Biodiver Rec* 2013;2013: 68–69.
42. Laksanawimol P, Petpiroon S, Damrongphol P. Trade of seahorses, *Hippocampus* spp. (Actinopterygii: Syngnathiformes: Syngnathidae), on the East Coast of the Gulf of Thailand. *Acta Ichthyol Piscata* 2013;3: 229–235.
43. Chang CH, Jang-Liaw NH, Lin YS, Fang YC, Shao KT. Authenticating the use of dried seahorses in the traditional Chinese medicine market in Taiwan using molecular forensics. *J Food Drug Analy* 2013;21: 310–316.
44. Zhang Y, Pham NK, Zhang H, Lin J, Lin Q. Genetic variations in two seahorse species (*Hippocampus mohnikei* and *Hippocampus trimaculatus*): evidence for Middle Pleistocene population expansion. *PloS One* 2014;9: e105494.

45. Pollom R. *Hippocampus mohnikei*. The IUCN Red List of Threatened Species 2017: <http://dx.doi.org/10.2305/IUCN.UK.20173.RLTS.T41005A54907304.en>43. Downloaded on 10 November 2018.
46. Shetye SR, *Gouveia AD, Singbal SY, Naik CG, Sundar D*. et al. Propagation of tides in the Mandovi–Zuari estuarine network. *Proc Indian Acad Sci (Earth Planet Sci)* 1995; 104: 667–682.
47. Qasim SZ, Sen Gupta R. Environmental characteristics of the Mandovi-Zuari estuarine system. *Estuar Coast Shelf Sci* 1981; 13: 557–578.
48. Madhuratap M, Nair KNV, Gopalkrishnan TC, Haridas P, Nair KKC. et al. Arabian sea oceanography and fisheries of the west coast of India. *Curr Sci* 2001; 81: 355–361.
49. Ansari ZA, Sreepada RA, Dalal SG, Ingole BS, Chatterji A. Environmental influences on the trawl catches in a bay-estuarine system of Goa, west coast of India. *Estuar Coast Shelf Sci* 2003; 56: 503–515.
50. Ansari ZA, Chatterji A, Ingole BS, Sreepada RA, Rivonker CU. et al. Structure of inshore demersal fish community at Goa. *Estuar Coast Shelf Sci* 1995; 41: 593–610.
51. Lourie S. Measuring seahorses. Project Seahorse Technical Report No.4, Version 1.0. Project Seahorse, Fisheries Centre, University of British Columbia; 2003.
52. Zhang Y, Qin G, Wang X, Qiang L. A new species of seahorse (Teleostei: Syngnathidae) from the South China Sea. *Zootaxa* 2016; 4170: 384–392.
53. Wibowo K, Tashiro S, Motomura H. Seahorses of the genus *Hippocampus* (Syngnathidae) from Kagoshima Prefecture, southern Japan, with a new record of *H. mohnikei* Bleeker, 1853. *Nature of Kagoshima* 2017; 43: 71–76.
54. Underwood AJ. *Experiments in Ecology: their logical and interpretation using Analysis of Variance*. Cambridge University Press. Cambridge, UK; 1997.

55. Kumar R Singh PJ, Nagpure NS, Kushwaha B, Srivastava SK.et al. A non-invasive technique for rapid extraction of DNA from fish scales. *Ind J Exp Biol* 2007; 45: 992–997.
56. Qin G, Zhang Y, Ho ALFC, Zhang Y, Lin Q. Seasonal distribution and reproductive strategy of seahorse. *ICES J Mar Sci* 2017; 74: 2170–2179.
57. Lourie SA, Vincent ACJ.A marine fish follows Wallace’s line: the phylogeography of the three-spot seahorse (*Hippocampus trimaculatus*, Syngnathidae, Teleostei) in Southeast Asia. *J Biogeogr* 2004;31: 1975–1985.
58. Altschul SF, Gish W, Miller W, Myers EW, Lipman DJ. Basic local alignment search tool. *J Mol Biol* 1990; 215: 403–410.
59. Kumar S, Stecher G, Tamura K.MEGA7: Molecular Evolutionary Genetics Analysis, version 7.0 for bigger datasets. *Mol Biol Evol*2016;33: 1870–1874.
60. Kimura M. A simple method for estimating evolutionary rates of base substitutions through comparative studies of nucleotide sequences. *J Mol Evol*1980; 16: 111–120.
61. Wyrcki K.Physical oceanography of the southeast Asian waters. Scientific results of maritime investigations of the South China Sea and the Gulf of Thailand 1959–1961. Naga Report, 2. Scripps Institution of Oceanography, La Jolla, CA; 1961.
62. Choi Y, Rho S, Park H, Kang D. Population characteristics of two seahorses, *Hippocampus coronatus* and *Hippocampus mohnikei*, around seagrass beds in the southern coastal waters of Korea. *Ichthyol Res* 2012; 59: 235–241.
63. Kwak S, Huh S, Kim H. Feeding habits of *Hippocampus mohnikei* in an eelgrass (*Zostera marina*) bed. *Korean J Ichthyol* 2008;20: 112–116.
64. Panithanarak T, Karuwanjaroen R.A preliminary study of genetic differentiation in the Japanese seahorse (*Hippocampus mohnikei*) populations: a possibility of cryptic species. *Burapha Sci J* 2019; 24: 124–137.

65. Hou F., Wen L, Peng C, Guo J. Identification of marine traditional Chinese medicine dried seahorses in the traditional Chinese medicine market using DNA barcoding. *Mitochondrial DNA A* 2018; 29(1):107–112.
66. Otsuka Y, Suzuki H, Akagawa I. Occurrence, gonad morphology and maturity of Japanese seahorse *Hippocampus mohnikei* in Matsushima Bay, Japan. *J School Mar Sci Tech Tokai Univ* 2009;7: 11–22.
67. Wafar S. Ecology of mangroves along the estuaries of Goa; Ph. D. Thesis, Karnataka University, Dharward, India; 1987.
68. Jagtap TG. Distribution of seagrasses along Indian coast. *Aquac Bot* 1991; 40: 379–386.
69. Padmavati G, Goswami SC. Zooplankton ecology in the Mandovi-Zuari estuarine system of Goa, west coast of India. *Ind J Mar Sci* 1996; 25: 268–273.
70. Dalal SG, Goswami SC. Temporal and ephemeral variations in copepod community in the estuaries of Mandovi and Zuari– west coast of India. *J Plankton Res* 2001; 23: 19–26.
71. Das PB. Zooplankton assemblages in spatial stretches of a tropical estuary. *Int J Res Appl Sci Engg Technol* 2017; 5: 1789–1799.
72. Qin G, Johnson C, Zhang Y, Zhang H, Yin J, Miller G. et al. Temperature-induced physiological stress and reproductive characteristics of the migratory seahorse *Hippocampus erectus* during a thermal stress simulation. *Biol Open* 2018; 25: 7(6).bio032888.
73. Scales H. Advances in the ecology, biogeography and conservation of seahorses (genus *Hippocampus*). *Prog Phys Geog* 2010; 34: 443–458.
74. Bohonak AJ. Dispersal, gene flow, and population structure. *Q Rev Biol* 1999; 74:21–45.
75. Palumbi SR. Genetic divergence, reproductive isolation, and marine speciation. *Annu. Rev Ecol Evol S* 1994; 25: 547–572.

76. Shetye SR, Gouveia AD, Shenoi SSC, Michael GS, Sundar D, Almedia AM. et al. The coastal current off western India during the northeast monsoon. *Deep-Sea Res* 1991;38: 1517–1529.
77. Fleminger A. The Pleistocene equatorial barrier between the Indian and Pacific oceans and a likely cause for Wallace's Line. In Pierrot-Bults AC, van der Spoel S, Zahuranec BJ, Johnson RK editors, *Pelagic marine science*. UNESCO Tech Pap Mar Sci 1986; 49: 84–97.
78. Maree RC, Whitfield AK, Booth AJ. Effect of water temperature on the biogeography of South African estuarine fishes associated with the subtropical/warm temperate subtraction. *S Afr J Sci* 2000; 96: 184–188.
79. Bowen BW, Bass AL, Rocha LA, Grant WS, Robertson DR. Phylogeography of the trumpetfishes (*Aulostomus*): ring species complex on a global scale. *Evolution* 2001; 55: 1029–1039.
80. Martin-Smith KM, Vincent ACJ. Seahorse declines in the Derwent estuary, Tasmania, in the absence of fishing pressure. *Biol Conserv* 2005; 123: 533–545.
81. Shokri MR, Gladstone W, Jelbart J. The effectiveness of seahorses and pipefish (Pisces: Syngnathidae) as a flagship group to evaluate the conservation value of estuarine seagrass beds. *Aquat Conserv* 2009; 19: 588–595.

Table 1. Detailed morphology of *H. mohnikei*. Morphological characteristics of four specimens of *Hippocampus mohnikei* collected from the Mandovi estuary, Goa, central west coast of India (MK1 and MK2 = Female; MK3 and MK4 = Male).

	MK1	MK2	MK3	MK4
Morphometric characters (mm)				
Height (Ht)	39.2	54.2	48.1	51.3
Standard length (SL)	47.3	60.1	55.2	57.2
Trunk length (TrL)	16.1	19.4	15.2	15.1
Tail length (TaL)	24.2	32.1	31.2	33.1
Head length (HL)	8.5	9.1	9.2	8.7
Snout length (SnL)	2.5	3.1	3.3	2.5
HL/SnL ratio	3.4	3.2	3.3	3.5
Snout depth (SnD)	1.5	2.1	2.1	2.1
Head depth (HD)	5.5	7.1	6.9	7.2
Eye orbit	1.5	2.1	2.2	2.1
Trunk depth between 4 th and 5 th trunk ring (TD4)	3.1	4.2	3.9	4.1
Trunk depth between 9 th and 10 th trunk ring (TD9)	4.7	6.1	5.8	5.9
Pectoral fin base length	2.1	2.1	2.1	2.2
Dorsal fin base length	3.5	4.1	4.1	3.9
Anal fin base length	0.5	0.5	0.5	0.5
Pouch length	-	-	6.2	6.6
Pouch depth	-	-	3.1	2.5
Pouch width	-	-	3.2	3.3
Meristic features (numbers)				
Trunk Rings (TrR)	11	11	11	11
Tail Rings (TaR)	37	38	37	39
TrR supporting dorsal fin	2	2	2	2
TaR supporting dorsal fin	1	1	1	1
Cheek spines	2	2	2	2
Eye spines	2	2	2	2
Enlargement of trunk Rings	1, 4, 7, 11	1, 7, 10	1, 4, 7, 11	1, 4, 7, 10
Enlargement of tail Rings	4, 7, 10, 13	4, 8, 10, 13	4, 7, 9, 13	4, 7, 10, 14
Dorsal fin rays	15	16	16	16
Pectoral fin rays	12	14	14	14
Anal fin rays	4	4	4	4

Table 2. Morphological comparison of seahorses. Comparison of morphological characteristics of *H. mohnikei* with other two seahorse species, (*H. trimaculatus* and *H. kuda*). Sample size for each species shown in parentheses. Mean±SD denoted with different superscripts significantly differ from each other (P < 0.05).

Morphometrics (mm)	<i>H. mohnikei</i> (n = 4)	<i>H. kuda</i> (n = 10)	<i>H. trimaculatus</i> (n = 10)
Height (Ht)	48.2 ± 6.50 ^a	157.73 ± 19.24 ^b	93.06 ± 14.71 ^c
Standard Length (SL)	54.95 ± 5.48 ^a	182.65 ± 11.64 ^b	109.87 ± 6.45 ^c
Trunk Length (TrL)	16.45 ± 2.02 ^a	47.83 ± 2.54 ^b	26.40 ± 2.12 ^c
Tail Length (TaL)	30.15 ± 4.04 ^a	104.43 ± 9.07 ^b	61.70 ± 3.40 ^c
Head Length (HL)	8.83 ± 0.41 ^a	30.39 ± 1.88 ^b	21.70 ± 1.77 ^c
Snout Length (SnL)	2.67 ± 0.21 ^a	12.06 ± 1.04 ^b	8.90 ± 0.99 ^c
HL/SnL ratio	3.33 ± 0.14 ^a	2.54 ± 0.16 ^b	2.45 ± 0.19 ^{bc}
Snout Depth	1.95 ± 0.30 ^a	4.25 ± 0.41 ^b	3.45 ± 0.16 ^c
Head Depth	6.68 ± 0.79 ^a	14.80 ± 1.84 ^b	9.50 ± 0.53 ^c
TD4	3.83 ± 0.50 ^a	12.16 ± 1.19 ^b	6.75 ± 0.86 ^c
TD9	5.63 ± 0.63 ^a	18.68 ± 1.51 ^b	9.55 ± 0.90 ^c
Pectoral fin base length	2.03 ± 0.1 ^a	7.07 ± 1.2 ^b	4.75 ± 0.6 ^c
Dorsal fin base length	3.88 ± 0.3 ^a	15.73 ± 1.8 ^b	9.80 ± 0.8 ^c
Meristic counts			
Trunk Rings (TrR)	11 ± 0.00	11 ± 0.00	11 ± 0.00
Tail Rings (TaR)	38 ± 1.00 ^a	36 ± 1.00 ^b	41 ± 1.00 ^c
TrR supporting Dorsal Fin	2 ± 0.00	2 ± 0.00	2 ± 0.00
TaR supporting Dorsal Fin	1 ± 0.00	1 ± 0.00	1 ± 0.00
Cheek Spines	2 ± 0.00 ^a	1 ± 0.00 ^b	1 ± 0.00 ^c
Eye spines	2 ± 0.00 ^a	1 ± 0.00 ^b	1 ± 0.00 ^c
Dorsal fin rays	16 ± 1.00 ^a	18 ± 1.00 ^b	20 ± 1.00 ^c
Pectoral fin rays	14 ± 1.00 ^a	16 ± 1.00 ^b	17 ± 1.00 ^c

Table 3. Comparison of morphological characters. Comparison of diagnostic morphological characters (range and mean) of vouchered specimens of *Hippocampus mohnikei*. Values in parentheses are mean.

Data source	Present Study	Lourie et al. [15,25]	Thangaraj and Lipton [11]	Zhang et al. [52]	Wibowo et al. [53]
Voucher/field Number	NIO1015/19	RMNH7259	CMFRI No. 146	SCSMBC00741 8–19	KAUM-1. 17724
Locality	Goa, west coast of India	Vietnam	Southeast coast of India	Yellow Sea, China	Kagoshima, Southern Japan
No. of samples (N)	04	04	01	16	01
Morphometrics (mm)					
Standard Length (SL)	47.3–60.1 (54.95)	54.0–57.0	70.0	52.5–83.0 (66.4)	-
Trunk Length (TrL)	15.1–19.4 (16.45)		22.0	15.0–23.0 (19.2)	-
Tail Length (TaL)	24.2–33.1 (30.15)		38.0	28.5–46.0 (36.7)	-
Head Length (HL)	8.5–9.2 (8.83)		10.0	9.0–14.0 (10.5)	-
Snout Length (SnL)	2.5–3.3 (2.67)		3.0	1.8–3.9 (2.4)	
HL/SnL ratio	3.2–3.5 (3.35)	2.8–3.9 (3.0)	3.33	3.59–5.75 (4.5)	3.1
Snout Depth	1.5–2.1 (1.95)	-	2.5	-	-
Head Depth	5.5–7.2 (6.68)	-	7.0	-	-
TD4	3.1–4.2 (3.83)	-	5.5	-	-
TD9	4.7–6.1 (5.63)	-	8.0	-	-
Meristic counts					
Trunk Rings (TrR)	11	11	11	11	11
Tail Rings (TaR)	3737–39 (38)	37–40 (38)	38	37–40 (38)	38
TrR supporting dorsal fin	2	2	-	-	-
TaR supporting dorsal fin	1	1	-	-	-
Cheek Spines	2	2	2		2
Rounded spines below eye	Double	Double	Single	-	-
Dorsal fin rays (DF)	15–16	15–16	14	16	15
Pectoral fin rays	12–14	12–14 (13)	12	12–14 (13)	12
Anal fin rays (AF)	4	-	-	4	-

Table 4. Pair-wise genetic distance based on COI gene sequences. Pair-wise genetic distances (Kimura 2-parameter model) between *Hippocampus mohnikei* populations of Goa and the Indo-Pacific region based on COI gene sequences. Values in parentheses indicate percentage.

Localities of <i>H. mohnikei</i> with GenBank accession numbers	Goa	Japan	Vietnam	China
Goa Specimens (MN595216–MN595218; MK330041.1)	0.00			
Japan (GQ502158.1–GQ502159)	0.008 (0.8)	0.00		
Vietnam (GQ502157.1)	0.007 (0.7)	0.009 (0.9)	0.00	
China (KP140138–KP140181)	0.010 (1.0)	0.003 (0.3)	0.010 (1.0)	0.00

1 **Table 5. Pair-wise genetic distance based on Cyt *b* gene sequences.** Pair-wise genetic distances (Kimura 2-parameter model) between
 2 *Hippocampus mohnikei* populations of Goa and the Indo-Pacific region based on Cyt *b* gene sequences. Genetic divergence of > 2% within same
 3 locality separated out. Values in parentheses indicate percentage.
 4

Localities of <i>H. mohnikei</i> with GenBank Accession numbers	Goa	Japan1	Japan2	Korea1	Korea2	China	Thailand
Goa Specimens (MN595213.1, MN595214.1, MN595215.1 and MK112274.2)	0.00						
Japan1 (AF192688.1–AF192689.1; KT731898.1–KT731909.1)	0.067 (6.7)	0.00					
Japan2 (KX017612.1–KX017625.1)	0.070 (7.0)	0.071 (7.1)	0.00				
Korea1 (KT731897.1–KT731920.1; KT731924.1–KT731926.1; KT731929.1; KT731932.1–KT731935.1; KT731940.1–KT731941.1; KT731944.1– KT731952.1 and KT731955.1)	0.066 (6.6)	0.040 (4.0)	0.044 (4.4)	0.00			
Korea2 (KT731921.1–KT731923.1; KT731928.1; KT731930.1–KT731931.1; KT731936.1–KT731937.1, KT731943.1 and KT731955.1)	0.067 (6.7)	0.004 (0.4)	0.012 (1.2)	0.066 (6.6)	0.00		
China (KT946929.1–KT946937.1; KC527556.1 and KC527584.1)	0.066 (6.6)	0.037 (3.7)	0.042 (4.2)	0.057 (5.7)	0.004 (0.4)	0.00	
Thailand (EU179923.1–EU179924.1)	0.007 (0.7)	0.001 (0.1)	0.001 (0.1)	0.001 (0.1)	0.001 (0.1)	0.001 (0.1)	0.00

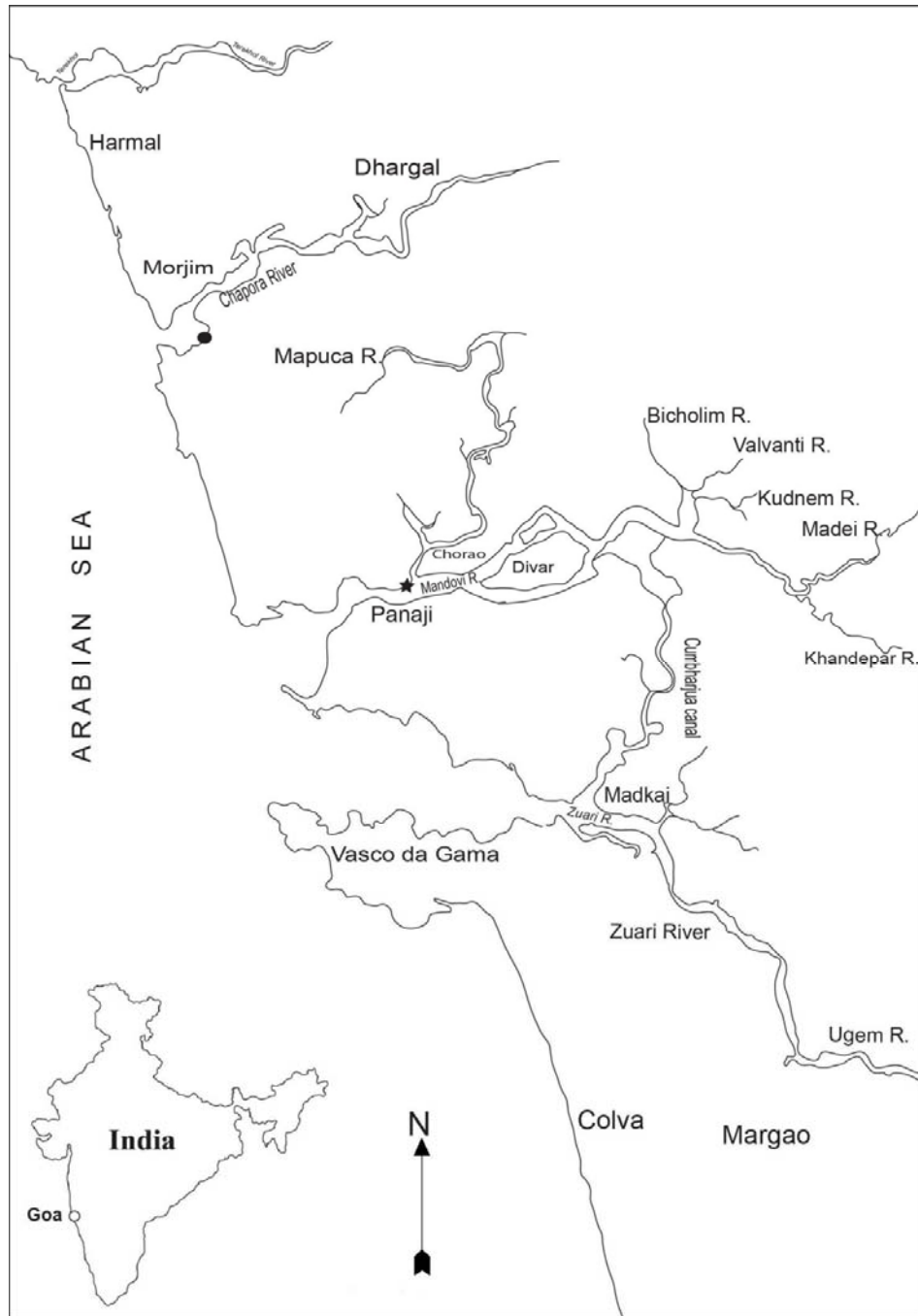


Fig 1. Sampling localities of *H. mohnikei*. A map showing major rivers and estuarine systems of Goa (central west coast of India). Location of a suspected adult male *H. mohnikei* in Chapora estuary (●); collection site of confirmed report of *H. mohnikei* in the Mandovi estuary (★).



Fig 2. Collected seahorses from Goa. Sub-adult specimens of *Hippocampus mohnikei* (Bleeker 1853) (females, MK1 and MK2; males, MK3 and MK4; NIO1015/19) from the Mandovi estuary, Goa, central west coast of India.



Fig 3. Close-up view of *H. mohnikei*. *Hippocampus mohnikei* (Bleeker 1853) (A-male (MK3) B-female (MK2) from the Mandovi estuary, Goa, central west coast of India (NIO1015/19).

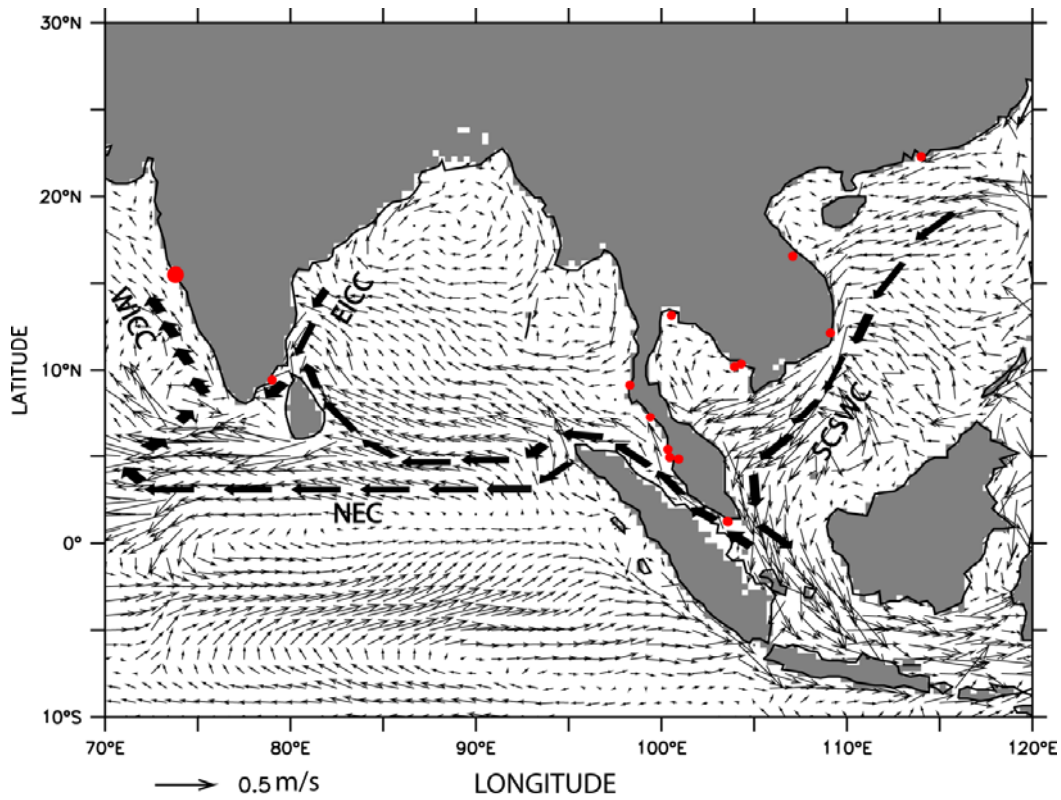


Fig. 4. Oceanic circulation in Indo-Pacific region. Climatological surface currents during winter season (November–February) for the Indo-Pacific region. Red dots indicate the geographic locations of distribution of *Hippocampus mohnikei*. (WICC= West Indian Coastal Current, EICC= East India Coastal Current, NEC= North Equatorial Current and SCSWC= South China Sea Warm Current).

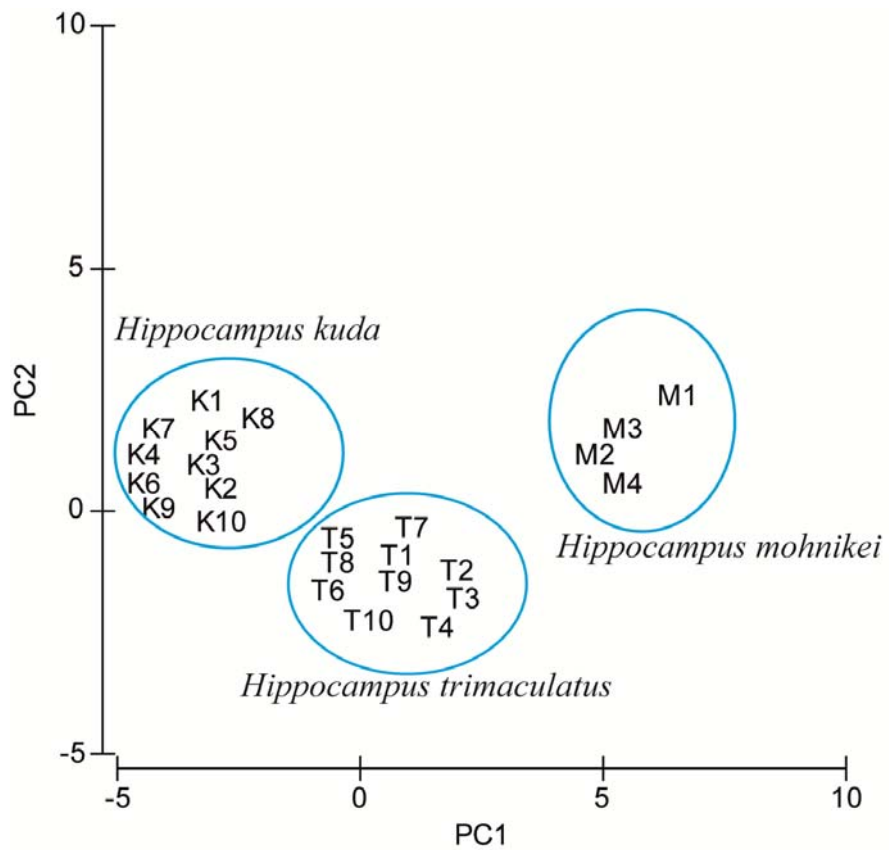


Fig. 5. PCA analysis scores. Scores of factor loadings plot of principal component analysis of three species, *H. mohnikei*, *H. kuda* and *H. trimaculatus* based on morphological data.

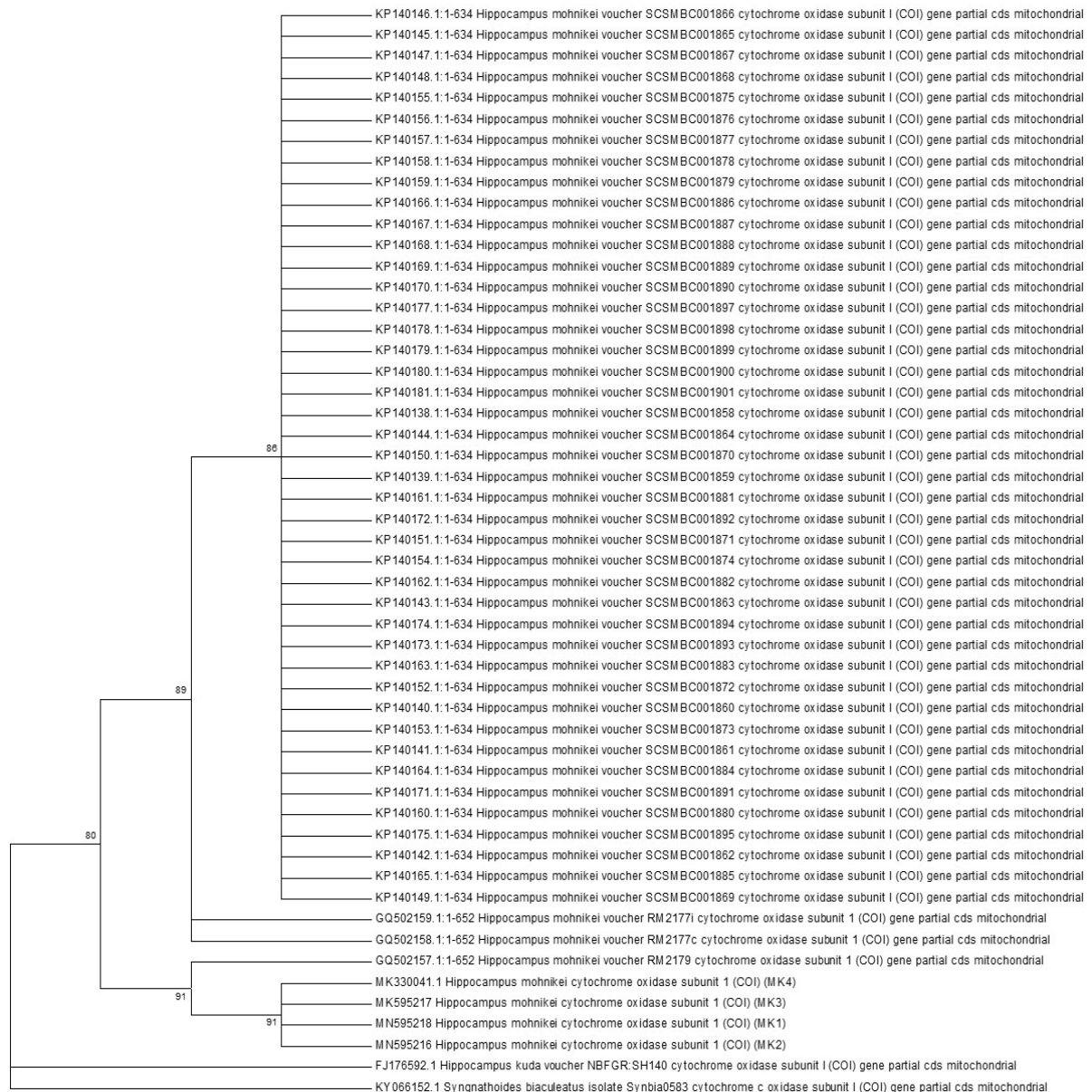


Fig.6. Phylogenetic relationships of Goa specimens with other seahorse species based on COI gene sequences. ML phylogenetic tree of Goa specimens and all vouchered *Hippocampus mohnikei* based on mitochondrial cytochrome oxidase subunit I gene (COI) sequences using K2P distances with 1000 bootstrap iterations. Numbers at nodes indicate bootstrap support values and nodes with >50% bootstrap support values are shown. The alligator pipefish, *Syngnathoides biaculeatus* (KY066152.1) served as an out-group species. Scale bar = genetic distance of 0.05. ML = Maximum likelihood

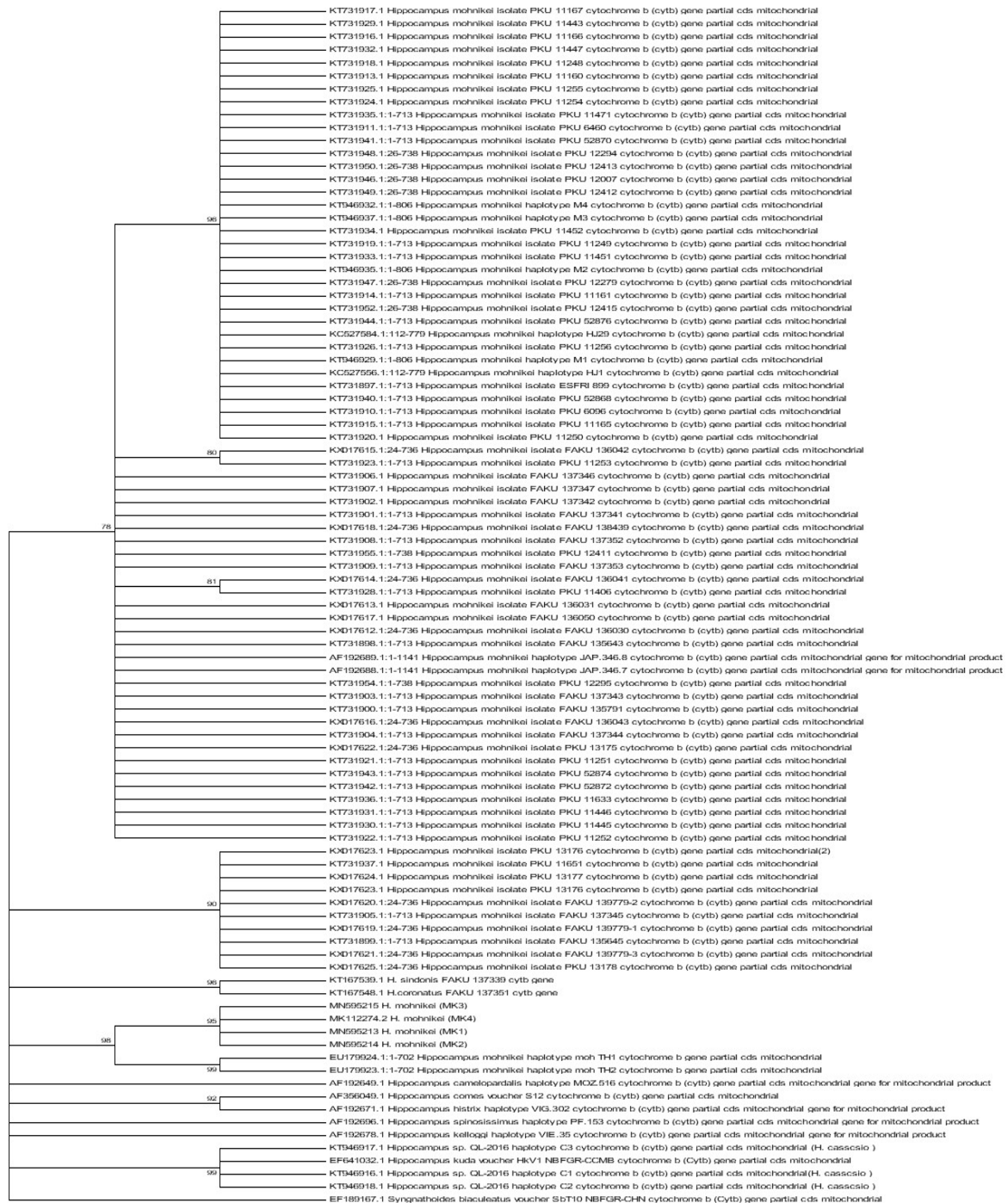


Fig. 7. Phylogenetic relationships of Goa specimens with other seahorse species based on Cyt *b* gene sequences. ML phylogenetic tree of Goa specimens and all vouchered *Hippocampus mohnikei* based on mitochondrial cytochrome *b* gene (Cyt*b*) sequences using K2P distances with 1000 bootstrap iterations. Numbers at nodes indicate bootstrap support values and nodes with >50% bootstrap support values are shown. The alligator pipefish, *Syngnathoides biaculeatus* (EF189167.1) served as an out-group species. Scale bar = genetic distance of 0.05. ML = Maximum likelihood

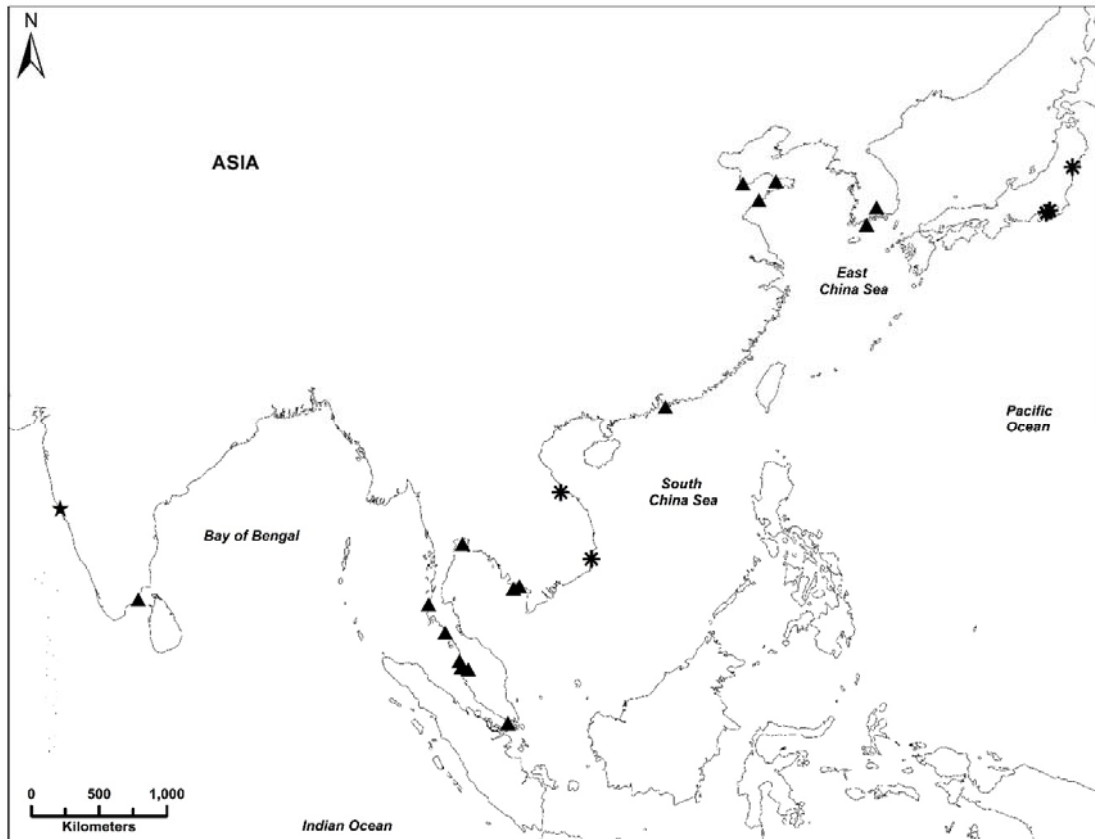


Fig. 8. Reported sightings of *H. mohnikei* in Indo-Pacific region. Map showing native range, recent sightings and all reported sightings for *Hippocampus mohnikei* in the Indo-Pacific region. Sightings are classified as new (this study,), recently published (2004–2016, (▲)) and original records [15] (*). Map was modified from Aylesworth et al. [37] and re-created in the World Geodetic System (WGS) 84 datum.

Supporting Information



S1 Fig. Picture of *H. mohnikei* posted on social media. Male specimen of *Hippocampus mohnikei* caught by gill net in the Chapora estuary, Goa, India

S1 Table. The COI and Cyt *b* gene sequences. GenBank accession numbers and sources of the mitochondrial gene sequences (COI and Cyt *b*) of seahorse species used for construction of phylogenetic trees.

Species	Loci	GenBank Accession no.	Voucher/field no.	Locality	Reference
<i>H. mohnikei</i>	COI	MN595218	MK1	Goa, India	Present study
		MN595216	MK2		Present study
		MN595217	MK3		Present study
		MK330041.1	NIO1015/19/ SMkei-05		Present study
	Cyt <i>b</i>	MN595213	MK1		Present study
		MN595214	MK2		Present study
		MN595215	MK3		Present study
		MK112274.2	NIO1015/19/ SMkei-05		Present study
<i>H. mohnikei</i>	COI	GQ502159.1	RM 2177i	Japan	Hou et al. (2018)
		GQ502158.1	RM 2177c	Japan	Hou et al. (2018)
		GQ502157.1	RM 2179	Vietnam	Hou et al. (2018)
	Cyt <i>b</i>	AF192689.1	JAP.346.8	Japan	Casey et al. (2004)
		AF192688.1	JAP.346.7	Japan	Casey et al. (2004)
		KT731898	FAKU 135643	Japan	Han et al. (2019)
		KT731899	FAKU 134645	Japan	Han et al. (2019)
		KT731900.1	FAKU 135791	Japan	Han et al. (2019)
		KX017612.1	FAKU 136030	Japan	Han et al. (2019)
		KX017613.1	FAKU 136031	Japan	Han et al. (2019)
		KX017614.	FAKU 136041	Japan	Han et al. (2019)
		KX017615.1	FAKU 136042	Japan	Han et al. (2019)
		KX017622.1	PKU 13175	Japan	Han et al. (2019)
		KX017623.1	PKU 13176	Japan	Han et al. (2019)
		KX017624.1	PKU 13177	Japan	Han et al. (2019)
		KX017625.1	PKU 13178	Japan	Han et al. (2019)
		KX017616.1	FAKU 136043	Japan	Han et al. (2019)
		KX017617.1	FAKU 136050	Japan	Han et al. (2019)
		KX017618.1	FAKU 138439	Japan	Han et al. (2019)
		KX017619.1	FAKU 139779-1	Japan	Han et al. (2019)
		KX017620.1	FAKU 139779-2	Japan	Han et al. (2019)
		KX017621.1	FAKU 139779-3	Japan	Han et al. (2019)
		KT731901.1	FAKU 137341	Japan	Han et al. (2019)
		KT731902.1	FAKU 137342	Japan	Han et al. (2019)
		KT731903.1	FAKU 137343	Japan	Han et al. (2019)
		KT731904.1	FAKU 137344	Japan	Han et al. (2019)
		KT731905.1	FAKU 137345	Japan	Han et al. (2019)
		KT731906.1	FAKU 137346	Japan	Han et al. (2019)
		KT731907.1	FAKU 137347	Japan	Han et al. (2019)
		KT731908.1	FAKU 137352,	Japan	Han et al. (2019)
		KT731909.1	FAKU 137353	Japan	Han et al. (2019)
		KX017623.1	PKU 13176	Japan	Han et al. (2019)
KT731897.1	ESFRI 899	Korea	Han et al. (2019)		
KT731937.1	PKU 11651	Korea	Han et al. (2019)		

		KT731910.1	PKU 6096	Korea	Han et al. (2019)
		KT731911.1	PKU 6460	Korea	Han et al. (2019)
		KT731935.1	PKU 11471	Korea	Han et al. (2019)
		KT731919.1	PKU 11249	Korea	Han et al. (2019)
		KT731920.1	PKU 11250	Korea	Han et al. (2019)
		KT731921.1	PKU 11251	Korea	Han et al. (2019)
		KT731922.1	PKU 11252	Korea	Han et al. (2019)
		KT731931.1	PKU 11446	Korea	Han et al. (2019)
		KT731936.1	PKU 11633	Korea	Han et al. (2019)
		KT731930.1	PKU 11445	Korea	Han et al. (2019)
		KT731923.1	PKU 11253	Korea	Han et al. (2019)
		KT731924.1	PKU 11254	Korea	Han et al. (2019)
		KT731925.1	PKU 11255	Korea	Han et al. (2019)
		KT731926.1	PKU 11256	Korea	Han et al. (2019)
		KT731928.1	PKU 11406	Korea	Han et al. (2019)
		KT731913.1	PKU 11160	Korea	Han et al. (2019)
		KT731914.1	PKU 11161	Korea	Han et al (2019)
		KT731955.1	PKU 12411	Korea	Han et al. (2019)
		KT731939.1	PKU 52866	Korea	Han et al. (2019)
		KT731941.1	PKU 52870	Korea	Han et al. (2019)
		KT731946.1	PKU 12007	Korea	Han et al. (2019)
		KT731949.1	PKU 12412	Korea	Han et al (2019)
		KT731952.1	PKU 12415	Korea	Han et al. (2019)
		KT731954.1	PKU 12295	Korea	Han et al. (2019)
		KT731950.1	PKU 12413	Korea	Han et al. (2019)
		KT731951.1	PKU 12414	Korea	Han et al. (2019)
		KT731948.1	PKU 12294	Korea	Han et al (2019)
		KT731945.1	PKU 54107	Korea	Han et al (2019)
		KT731918.1	PKU 11248	Korea	Han et al. (2019)
		KT731932.1	PKU 11447	Korea	Han et al (2019)
		KT731944.1	PKU 52876	Korea	Han et al. (2019)
		KT731953.1	PKU 12416	Korea	Han et al. (2019)
		KT731950.1	PKU 12413	Korea	Han et al (2017)
		KT731947.1	PKU 12279	Korea	Han et al. (2019)
		KT731933.1	PKU 11451	Korea	Han et al. (2019)
		KT731915.1	PKU 11165	Korea	Han et al (2019)
		KT731916.1	PKU 11166	Korea	Han et al (2019)
		KT731917.1	PKU 11167	Korea	Han et al. (2019)
		KT731929.1	PKU 11443	Korea	Han et al (2019)
		KT731934.1	PKU 11452	Korea	Han et al (2019)
		KT731927.1	PKU 11288	Korea	Han et al (2019)
		KT731943.1	PKU 52874	Korea	Han et al. (2019)
		KT731940.1	PKU 52868	Korea	Han et al. (2019)
		KT731938.1	PKU 52864	Korea	Han et al. (2019)
		KT731940.1	PKU 52872	Korea	Han et al. (2019)
		KT731938.1	PKU 10982	Korea	Han et al. (2019)
<i>H. mohnikei</i>	COI	KP140180.1	SCSMBC001900	China	Zhang and Lin (2014)*

		KP140167.1	SCSMBC001887	China	Zhang and Lin (2014)*
		KP140168.1	SCSMBC001888	China	Zhang and Lin (2014)*
		KP140166.1	SCSMBC001886	China	Zhang and Lin (2014)*
		KP140158.1	SCSMBC001878	China	Zhang and Lin (2014)*
		KP140157.1	SCSMBC001877	China	Zhang and Lin (2014)*
		KP140156.1	SCSMBC001876	China	Zhang and Lin (2014)*
		KP140141.1	SCSMBC001861	China	Zhang and Lin (2014)*
		KP140153.1	SCSMBC001873	China	Zhang and Lin (2014)*
		KP140155.1	SCSMBC001875	China	Zhang and Lin (2014)*
		KP140159.1	SCSMBC001879	China	Zhang and Lin (2014)*
		KP140160.1	SCSMBC001880	China	Zhang and Lin (2014)*
		KP140171.1	SCSMBC001891	China	Zhang and Lin (2014)*
		KP140148.1	SCSMBC001868	China	Zhang and Lin (2014)*
		KP140179.1	SCSMBC001899	China	Zhang and Lin (2014)*
		KP140145.1	SCSMBC001865	China	Zhang and Lin (2014)*
		KP140177.1	SCSMBC001897	China	Zhang and Lin (2014)*
		KP140164.1	SCSMBC001884	China	Zhang and Lin (2014)*
		KP140178.1	SCSMBC001898	China	Zhang and Lin (2014)*
		KP140144.1	SCSMBC001864	China	Zhang and Lin (2014)*
		KP140170.1	SCSMBC001890	China	Zhang and Lin (2014)*
		KP140146.1	SCSMBC001866	China	Zhang and Lin (2014)*
		KP140181.1	SCSMBC001901	China	Zhang and Lin (2014)*
		KP140147.1	SCSMBC001867	China	Zhang and Lin (2014)*
		KP140169.1	SCSMBC001889	China	Zhang and Lin (2014)*
		KP140149.1	SCSMBC001869	China	Zhang and Lin (2014)*
		KP140137.1	SCSMBC001857	China	Zhang and Lin (2014)*
		KP140162.1	SCSMBC001882	China	Zhang and Lin (2014)*
		KP140174.1	SCSMBC001894	China	Zhang and Lin (2014)*
		KP140173.1	SCSMBC001893	China	Zhang and Lin (2014)*
		KP140163.1	SCSMBC001883	China	Zhang and Lin (2014)*
		KP140152.1	SCSMBC001872	China	Zhang and Lin (2014)*
		KP140140.1	SCSMBC001860	China	Zhang and Lin (2014)*
		KP140143.1	SCSMBC001863	China	Zhang and Lin (2014)*
		KP140139.1	SCSMBC001859	China	Zhang and Lin (2014)*
		KP140150.1	SCSMBC001870	China	Zhang and Lin (2014)*
		KP140161.1	SCSMBC001881	China	Zhang and Lin (2014)*
		KP140172.1	SCSMBC001892	China	Zhang and Lin (2014)*
		KP140154.1	SCSMBC001874	China	Zhang and Lin (2014)*
		KP140151.1	SCSMBC001871	China	Zhang and Lin (2014)*
		KP140138.1	SCSMBC001858	China	Zhang and Lin (2014)*
		KP140165.1	SCSMBC001885	China	Zhang and Lin (2014)*
		KP140142.1	SCSMBC001862	China	Zhang and Lin (2014)*
		KP140175.1	SCSMBC001895	China	Zhang and Lin (2014)*
	Cyt <i>b</i>	KC527556	HJ1	China	Zhang et al. (2014)
		KC527584.1	HJ29	China	Zhang et al. (2014)
		KT946937.1	Haplotype M3	China	Zhang et al. (2016)
		KT946935.1	Haplotype M2	China	Zhang et al. (2016)
		KT946929.1	Haplotype M1	China	Zhang et al. (2016)
		KT946932.1	Haplotype M4	China	Zhang et al. (2016)
		EU179924.1	moh_TH1	Thailand	Panithanark (2015)*
		EU179923.1	moh_TH2	Thailand	Panithanark (2015)*

*References not cited in the article

Panitharanak T. Phylogeny of Thai seahorses inferred from mitochondrial DNA cytochrome *b* gene. In Proceedings of the Burapha University International Conference 2015 (BUU2015). 2015; pp. 1010–1023). Chonburi: Burapha University.

Zhang Y. Lin Q. DNA barcoding Chinese medicinal fish species in the family, Syngnathidae 2014. Unpublished.

S2 Table.PCA analysis of seahorse species. Loadings of components matrix and contributions of each axis to total variance ranked as per their coefficients (eigen values $> \pm 0.30$ are included; values in parentheses indicate variance explained by each principal component).

Morphological characters	Coefficients
Principal component 1 (81%)	
SL	0.334
TaL	0.333
TD4	0.329
TD9	0.327
HL	0.327
TrL	0.325
HD	0.324
SnL	0.318
SnD	0.314
Principal component 2 (16%)	
TaR	0.663
DF	0.655