

Bacterial diversity associated with a newly described bioeroding sponge, *Cliona thomasi*, from the coral reefs on the West Coast of India

Sambhaji Mote^{1,2}, Vishal Gupta^{1,4#}, Kalyan De^{1,3}, Mandar Nanajkar¹, Samir R. Damare¹, Baban Ingole*¹

¹CSIR–National Institute of Oceanography, Dona Paula, Goa, India.

²Department of Marine Sciences, Bharathidasan University, Thiruchirappalli, Tamil Nadu, India.

³ School of Earth, Ocean, and Atmospheric Sciences, Goa University, Goa, India.

⁴School of Biosciences, University of Birmingham, Birmingham, B15 2TT, UK.

(*#corresponding author: (v.gupta@bham.ac.uk & baban.ingole@gmail.com)

Abstract:

The bacterial diversity associated with eroding sponges belonging to the *Cliona viridis* species complex is scarcely known. *Cliona thomasi* described from the west coast of India is a new introduction to the *viridis* species complex. In this study we determined the bacterial diversity associated with *C. thomasi* using next generation sequencing. The results revealed the dominance of Proteobacteria followed by Cyanobacteria, Actinobacteria and Firmicutes. Among Proteobacteria, the Alphaproteobacteria were found to be the most dominant class. Furthermore, at genus level, *Rhodothalassium* were highly abundant followed by *Endozoicomonas* in sponge samples. The beta-diversity and species-richness measures showed remarkably lower diversity in *Cliona thomasi* than the ambient environment. The determined lower bacterial diversity in *C. thomasi* than the environmental samples, thus, categorized it as a low microbial abundance (LMA). Functional annotation of the *C. thomasi* associated bacterial community indicates their possible role in photo-autotrophy, aerobic nitrification, coupling of sulfate reduction and sulphide oxidization. The present study unveils the bacterial diversity in bioeroding *C. thomasi*, which is crucial step to determine the functions of the sponge holobiont in coral reef ecosystem.

Keywords: Bioeroding sponge; *Cliona thomasi*; Coral; Metagenome; Sponge-Microbial association; 16S rRNA, Function.

Introduction

Marine sponges (phylum Porifera), one of the oldest multicellular animals (Metazoa), are an essential component of aquatic benthic communities (Wulff 2001; de Goeij et al. 2013). Sponges are also important members for coastal food webs, biogeochemical cycles and play a vital role in marine habitats by providing a significant number of important ecosystem services such as the establishment of a 3-dimensional structure that generates habitat for other organisms, water purification and nutrient cycling (Bell 2008). Interestingly, sponges are known to harbour the highest number of prokaryotic symbionts along with other invertebrates (Webster and Thomas 2016). Further, the prokaryotic sponge-symbionts were found to be stable, to certain extent, at different physico-chemical environmental conditions such of variability in nutrient composition (Luter et al. 2014), temperature (Simister et al. 2012; Pita et al. 2013), pH (Ribes et al. 2012), light (Cárdenas et al. 2014) and at geographical scales (Steinert et al. 2016; Thomas et al. 2016) and temporal (Erwin et al. 2015). Such sponge-prokaryotic symbiotic association has recently been suggested to play roles in maintaining the fitness of sponges over other competitors in the same niche (Kiran et al. 2018; Pita et al. 2018). Sponges have also been considered as a reservoir of pharmacologically and biotechnologically important microbes (Villegas-Plazas et al. 2019). Growing evidence suggests that sponge microbial symbionts are the main producers of several documented sponge-derived bioactive compounds rather than the host itself (Pita et al. 2018). A number of sponge-holobiont publications reported microbial metabolic contributions to the host sponge, e.g., heterotrophy and autotrophy, and elemental recycling, along with the production of bioactive compounds (Webster and Thomas 2016; Bourne et al. 2016; Slaby et al. 2017).

Coral bioeroding sponges are the least studied for their microbiome association and functions. However, the role of sponge-holobiont in space competition and coral destruction is not clear. A few studies have shown that the sponges of *Cliona viridis* complex are associated with Symbiodiniaceae, which exert thermotolerance to them over their space competitor neighbouring corals (Ramsby et al. 2017; Achlatis et al. 2019). As a result, the invasion of sponge increased over the coral affected by the sudden increase in temperature, for instance, bleaching events (Carballo et al. 2013). The only reports available for microbial diversity analysis in *C. viridis* complex were for *C. viridis* (Schmidt, 1862) from the Mediterranean (Blanquer et al. 2013; Soares 2016), *C. varians* (Duchassaing & Michelotti, 1864) from the Florida keys (Sacristán-Soriano et al. 2020), and *C. orientalis* Thiele, 1900 from the Great Barrier Reef (Pineda et al. 2016, 2017; Ramsby et al. 2018b). However, the prokaryotic associates of these bioeroding sponges were neglected for such sponge-holobiont interactions. Therefore it is crucial to define the sponges and their associates as a holobiont unit

rather than only the sponge as an autonomous entity (Roughgarden et al. 2017; Pita et al. 2018). Before gaining insights about the microbial compositional change-induced physiological plasticity in the host, determining associated community structure is the first necessity. The aim of the present study is to investigate the bacterial community associated coral excavating sponge *Cliona thomasi* Mote, Schönberg, Samaai, Gupta & Ingole, 2019. The same study also described *C. thomasi* as an aggressive benthic competitor in coral reef, which overgrows in faster rate over the live coral colonies and outcompete live corals (Mote et al. 2019). This species belongs to the *C. viridis* species complex, which is considered to be among the most dominant and destructive macroborers on coral reefs (Schönberg et al. 2017). *Cliona thomasi* has been observed as a fast-growing, coral-infesting species with high ecological significance.

Cliona thomasi has also been listed as one of the WORMS top-ten new marine species of 2019 (<http://lifewatch.be/en/worms-top10-2018>), thereby, highlights its high ecological importance. Interestingly, *C. thomasi* has shown an increase in its prevalence over coral after a mass bleaching event in the year 2015-16. Our subsequent continuous monitoring of the site showed an increased abundance of *C. thomasi*. This observed increase in *C. thomasi*, at first instance, may be attributed to increased SST induced coral bleaching providing favourable ground for the sponge to proliferate. The Sea Surface Temperature (SST) data from the NOAA Coral Reef Watch (NOAA-CRW) platform revealed that the SST of the sponge habitat had exceeded the thermal bleaching threshold in the summer months (April-June) in the years 2015, 2016, 2017, 2018 and 2019 (Supplementary Fig. 1). During, monitoring this site, an anomalous increase in SST was observed during summer months. In order to gain insights about the host associate derived physiological benefits, this study defines the bacterial diversity associated with *C. thomasi* as a first step investigation

1. Materials and methods

1.1. Sample collection

Samples of the bioeroding sponge, *C. thomasi* growing on colonies of the hard coral *Turbinaria mesenterina* (Lamarck, 1816), were collected from the Malvan Marine Sanctuary (16° 3'46.76"N, 73°27'17.18"E) located on the central west coast of India". Corals in the Malvan Marine Sanctuary are under stress due to elevated temperature induced bleaching events (De et al. 2015), coral diseases (Hussain et al. 2016), sedimentation, and physical damages from unregulated tourism (De et al. 2020). The samples were collected from a depth of 5-7 m, and care was taken while collecting the samples that each sample was distinct and separated from others by at least five meters. The growth of *C. thomasi* over the coral species *T. mesenterina* is shown in Fig. 1. The sponge samples were collected in replicates of four. To compare the community with the ambient environment,

surrounding seawater samples (n=3) were collected from the same depth 1m away from the sponge. Samples were immediately brought on board, fixed in liquid nitrogen, and transported to the laboratory for further processing.

1.2.DNA extraction and library preparation

The collected samples were homogenized in liquid nitrogen and processed for DNA extraction using a tissue DNA extraction kit according to the manufacturer's protocol (Invitrogen, California, United States). About 2 L of seawater was filtered using a 0.22 µm polycarbonate membrane filter (Whatman ®), and the filtrate was used for DNA isolation. For bacterial community analysis, amplification of the 16S rRNA V3-V4 region was performed (Muyzer et al. 1993; Li et al. 2009). Illumina MiSeq 16S rRNA libraries were generated following a standard protocol (New England Biolabs, Frankfurt, Germany). The libraries were validated using 2100 Bioanalyzer (Agilent Technologies) for quality, and samples were sequenced using the 2 × 300 paired-end chemistry (MiSeq Reagent Kit).

1.3.Sequence Assembly and Prokaryotic Community Analysis

Illumina MiSeq platform generated raw 16S rRNA amplicon reads for all the samples were processed for quality filtering and adaptor removal using FastQC V0.11.5 (<http://www.bioinformatics.babraham.ac.uk/projects/fastqc>). After trimming, V3-V4 region sequences were assembled using the FLASH program 1.2.11 with minimum overlap cutoff of 10 bp and maximum overlap cutoff of 240 bp. By default mismatches were allowed (default is 0) and as results produced an average contigs length 350-450 bp. The chimera sequences were then removed using the de novo based UCHIME method implemented in the USEARCH tool version 11.0.667. Assembled reads were subjected to QIIME version 2 pipelines for downstream bioinformatics analysis (Bolyen et al. 2019). First, assembled reads were clustered using UCLUST (Edgar, 2010), and operational taxonomic units (OTUs) were picked at a 97% similarity. The singleton OTUs (read abundance < 2) were discarded from the analysis (Caporaso et al. 2010). The most abundant reads for the remaining OTUs were selected as representatives and then mapped against rRNA database SILVA release; 132 version using PyNAST (Caporaso et al. 2010). Taxonomy for each mapped OTUs were assigned using RDP classifier using threshold value of 0.8 (Wang et al. 2007). The OTUs did not match to any reference taxonomy were considered as unknown. We used METAGENassist (Arndt et al. 2012) for assess putative functional analysis of sponge bacterial community.

1.4. Statistical analysis

The diversity indices such as species richness and Shannon index were determined for all the investigated samples in R, package *vegan* v.2.5-6 (Oksanen 2017). The rarefaction curves for the samples were derived from the genus summary using R, package *vegan* v.2.5-6 (Oksanen 2017). The significant differences among the diversity indices values were determined by the Kruskal-Wallis test (with Dunn's post hoc test) in Past version 3. The differences in the beta-diversity of the bacterial community composition between the sponge and environmental samples were tested using PERMANOVA with the Bray Curtis test followed by 999 permutations in PRIMER v7. SIMPER analysis was performed to calculate the contribution of each bacterial community to the dissimilarity within and between samples in the PRIMER v7 (Clarke and Gorley 2015). Bacterial community composition across samples was ordinated using non-metric multidimensional scaling (NMDS) and ANOSIM performed in R, package *vegan* v.2.5-6 (Oksanen 2017).

2. Results

2.1. Prokaryotic diversity associated with *C. thomasi*

In this study, high-throughput 16S rRNA gene (V3 and V4 regions) sequencing analysis was performed for the newly defined coral eroding sponge *C. thomasi* to assess its associated bacterial diversity. The 16SrRNA analysis determined 317333-551000 quality reads assigned to 2531-9581 sponge OTUs while 364284-479774 reads were assigned to 18672-34773 environmental OTUs, (Supplementary Table 1). The rarefaction curve showed high sequencing coverage and higher taxonomic assignments to the environmental samples than sponge samples (Supplementary Fig. 2). Alpha diversity indices obtained from the analysis showed higher diversity and richness in environment samples than the sponge samples. Shannon's diversity index determined for the sponge and environment samples were 1.79 ± 0.12 and 3.16 ± 0.99 , respectively (Supplementary Table 1). The determined diversity indices were found to be significantly different for sponge and environment samples based on the Kruskal-Wallis test, followed by Dunn's posthoc test ($p < 0.05$).

The beta-diversity composition of sponge samples was found to be significantly different from the environment samples (PERMANOVA; $p = 0.02$, at Permutation N: 999). The significant difference among the diversity composition among sponge and environment samples were further confirmed by ANOSIM (Global R = 0.66, $p < 0.023$). The multivariate clustering from nMDS also confirmed the variation in the bacterial community composition among sponge and the surrounding environment. The clustering of samples based on bacterial taxonomic abundance variations is shown by both nMDS and heatmap (Supplementary Fig. 3 and 4). Similarity percentage analysis was an estimate to

determine the main contributing bacterial genera for the differences in the sponge and environmental samples. The bacterial genera which contributed for 75.65% dissimilarity between sponge and environmental samples were *Rhodothalassium*, *Thalassomonas*, *Neptuniibacter*, *Vibrio*, *Endozoicomonas*, *Lutibacter* and *Synechococcus* (Supplementary table 2).

A total of 23 phyla were found to be associated with the sponge species *C. thomasi* while 33 phyla in environmental samples. At the phylum level, all the samples included in this study were found to be dominated by Proteobacteria (sponge: 64.79±4.90%, ES: 66.30±20.0%), followed by Cyanobacteria (sponge: 12.69±10.69%, ES: 1.20±1.16%), Actinobacteria (sponge: 4.85±3.94, ES: 3.07±2.09%), and Bacteroidetes (sponge: 1.79±3.94, ES: 14.53±9.05%) (Fig. 2). Cyanobacteria was found significantly higher in sponge while Bacteroidetes in environmental samples (p -value <0.05).

Within the Proteobacteria at class level, sponge sample were found to be dominated by Alphaproteobacteria (43.73±11.11%) followed by Deltaproteobacteria (09.64±6.89%), Gammaproteobacteria (2.20±1.10%) and Betaproteobacteria (1.10±0.01%) (Fig. 3a). The environmental samples however, were found to be dominated with Gammaproteobacteria (50.33±26.81%) followed by Alphaproteobacteria (8.05±3.83%), Deltaproteobacteria (4.48±3.21%), and Betaproteobacteria (0.06±0.02%) (Fig. 3b). The significantly higher abundance of bacterial genera (p -value <0.05) found in sponge samples were *Rhodothalassium* (sponge: 24.17±8.96%, ES: 0.007±0.003%), *Synechococcus* (sponge: 5.82±4.11%, ES: 0.24±0.34%), *Endozoicomonas* (2.08±1.47%, ES: 0.02±0.01%), *Prochlorococcus* (sponge: 0.07±0.11%, ES: 0.07±0.01%), *Shewanella* (sponge: 0.55±0.30%, ES: 0.02±0.01%) and *Corynebacterium* (sponge: 0.10±0.05%, ES: 0.01±0.01%) (Fig. 4). The sponge specific bacteria genera were dominated by *Methylobacterium*, *Brevibacterium*, *Cupriavidus*, and *Massilia*, while the environmental samples were dominated by *Vibrio*, *Neptuniibacter*, *Alteromonas*, *Thalassomonas*, *Photobacterium* and *Lutibacter* (Fig. 4). Both the sponge and environmental samples showed significantly higher unidentified bacterial communities 58% and 62%, respectively. The unknown bacterial diversity was excluded from the study while analysing the data.

2.2.Functional Annotation

This study further determined the taxonomic based predictive functions of sponge specific prokaryotic communities using the METAGENassist web portal (Supplementary Fig. 5). The sponge associated bacterial population based predicted metabolic processes mainly include the breakdown of complex organic molecules such as “xylan,” “chitin and chlorophenol degraders,” and “sugar fermenters”. Metabolism functions revealed that ammonia oxidizer, nitrite reducer, nitrogen fixation,

sulfate reducer, and sulfide oxidizer were enriched in the sponge. Other processes identified in sponge were Chlorophenol degrading, Dehalogenation, Lignin degrader and Naphthalene degrading.

3. Discussion

The present study describes the bacterial diversity associated with bioeroding sponge *C. thomasi*, belonging to the family Clionaidae. This species was known to harbour photo symbiont dinoflagellate Zooxanthallae (Mote et al. 2019), which may provide essential nutrients to the host as it does to other *C. viridis* complex species (Hill et al. 2011). The determined bacterial diversity associated with *C. thomasi* in this study is the first step towards developing a baseline microbial diversity structure of *C. thomasi*.

Similar to earlier reports, *C. thomasi* investigated in this study was found to be dominated by Proteobacteria, together with the significant contributions by Cyanobacteria, and Actinobacteria, and frequent occurrence of Firmicutes, Bacteroidetes, and Planctomycetes (Thomas et al. 2016). In the present study, *C. thomasi* showed the dominance of Alphaproteobacteria similar to the previous reports of sponge species from *C. viridis* complex and other Symbiodiniaceae-bearing sponges (Supplementary Table 3) (Blanquer et al. 2013; Soares 2016; Pineda et al. 2016, 2017; Ramsby et al. 2018b; Sacristán-Soriano et al. 2020). However, azooxanthellate sponges (without Symbiodiniaceae association) such as *C. deltrix* Pang, 1973 and *C. celata* Grant, 1826 were reported for the predominance of Gammaproteobacterial communities (Jeong et al. 2015; Thomas et al. 2016; Sacristán-Soriano et al. 2020).

The identification of cyanobacteria as sponge specific photosynthetic-associate of *C. thomasi* corroborates with the earlier reports of finding the Cyanobacteria (*Synechococcus*) as sponge specific cluster and absent in seawater (Simister et al. 2012). The association of cyanobacteria in sponges benefits the host in various ways. For instance, compounds isolated from the cyanobacterial symbionts of the sponge *Lamellodysidea herbacea* deterred fish feeding (Sawhney and Mishra 2019; Schorn et al. 2019). Also, increased cyanobacteria abundance was shown to be an opportunistic proliferation in bleached *C. orientalis*, fulfilling the energy requirement of the host (Ramsby et al. 2018a). Morrow et al. (2015) showed the higher prevalence of *Synechococcus* in two different sponge species colonized in the acidified environment of a CO₂ seep. Photosynthetic symbionts not only act as the energy source to the sponge but also provide photoprotective effects against the intermittent high light exposure to sponge (Steindler et al. 2002) and also known to produce cytotoxic secondary metabolites (Teruya et al. 2004; Matthew et al. 2010). In addition to photosynthetic symbionts, the other sponge enriched microbes includes *Endozoicomonas*,

Williamsia, *Shewanella*, and *Vibrio*. *Endozoicomonas* is a common bacterial genus widely reported from different sponges (Nishijima et al. 2013), a wide range of coral species, and several other marine organisms (Jensen et al. 2010; Esteves et al. 2013). *Endozoicomonas* are known for multiple functions in sponges such as nutrient acquisition, structuring the sponge microbiome via signaling molecules or in host health stability (Nishijima et al. 2013; Gardères et al. 2015). The actinomycetes belonged to the genera *Williamsia* are known for bioactive natural product synthesis in sponges (Audia et al. 2017). *Shewanella* and *Vibrio* are frequently encountered as sponge associated microbes (Hentschel et al. 2012; Esteves et al. 2013).

The beta-diversity measures in this study showed a significant difference among bacterial diversity associated with the investigated sponge and environment samples (Supplementary Fig. 4). Recently, Steinert et al. (2019) also showed that the sponge's prokaryotic community were significantly different from the surrounding water. Higher species richness and Shannon diversity indices for the environment samples attribute to their higher diversity than the sponge. The results highlighted less complexity of bacterial community in *C. thomasi* than its surrounding environment suggesting it as a low microbial abundance (LMA) sponge (Gloeckner et al. 2014). These results corroborate well with previous reports on other closely related *Cliona* species such as *C. orientalis*, *C. varians*, and *C. viridis* (Blanquer et al. 2013; Poppell et al. 2014; Soares 2016; Pineda et al. 2016; Thomas et al. 2016; Sacrista-Soriano et al. 2020). The LMA characteristic of *C. thomasi* indicates a unique metabolic feature of higher availability of carbon in sponge choanosome than N and P through higher photosynthetic activity (Thacker and Freeman 2012). This fact is further supported by the identification of higher autotrophy through specifically determined *Synechococcus* together with Sulfur metabolism-related bacteria in *C. thomasi*.

The sponge enriched specific bacterial community is supportive of sponge holobiont with their distinct functions. The functions of sponge holobiont may broadly be classified into two categories (1) metabolism and (2) defence (Pita et al. 2018). The present study predicts the function of heterotrophic metabolism in *C. thomasi* through the degradation of complex polysaccharides such as xylan and chitin by the sponge specific bacterial community. Heterotrophic carbon metabolism through hydrolysis of complex polysaccharide has widely been reported from different sponge-associated bacterial community from different regions (Slaby et al. 2017). Heterotrophically metabolizing community association is further being supported by the fact that the microbes are also dependent upon the sponge biomass itself or the components of the sponge extracellular matrix (Slaby et al. 2017; Tout et al. 2017). The enrichment of N metabolism-related functions identified in this study highlights the putative role of *C. thomasi* associated microbes in the biogeochemical cycle

of nitrogen, which is one of the limiting nutrients in the marine environment (Kiran et al. 2018; Pita et al. 2018). For instance, *Rhodothalassium* may play a role in nitrogen cycling in sponge (Parfrey et al. 2018; Ramsby et al. 2018b). Sponges are known to produce an excess of ammonia as a waste by-product, which is toxic to their photosymbionts if not being assimilated (Hentschel et al. 2012). The higher prevalence of functions related to ammonia oxidisation in this study suggested the ammonia metabolism through either aerobic (nitrification, nitrogen fixation) or anaerobic (denitrification, anammox) manner (Hoffmann et al. 2009; Fiore et al. 2015; Ribes et al. 2015). Since nitrogen is the limiting factor for the primary productivity in the marine ecosystem, adaptation of microbial community capable of enriching N is essential in sponges for maintaining the symbiosis (Fan et al. 2012; Bayer et al. 2014; Moitinho-Silva et al. 2014). The determination of the higher abundance of nitrifying function in this study compared to denitrifying suggest that the sponge excrete nitrogen mainly in the form of ammonia (Southwell et al. 2008; Ribes et al. 2012; Morganti et al. 2017). The higher relative (%) of the function corresponding to nitrification further indicates that the *C. thomasi* holobiont act as a net source of bioavailable nitrogen (Fiore et al. 2013).

The other dominant function determined in *C. thomasi* based specific bacterial community was related to sulfur metabolism, mainly the sulphide oxidizer and sulfate reducer. Similar, endosymbiotic sulfur cycle through the association of sulfate-reducing and sulfide oxidizing symbionts has been described in a marine oligochaete worm (Dubiller et al. 2001), and the cold water sponge *Geodaa barrette* (Hoffmann et al. 2003). These functions are mainly attributed to the Alphaproteobacteria and Gammaproteobacteria community (Jensen et al. 2017). The present study also determined the higher abundance of *Rhodothalassium* (Alphaproteobacteria) and *Endozoicomonas* (Gammaproteobacteria) community in *C. thomasi*. The coupling of sulphide oxidizer and sulfate reducer supports in detoxification of sulphide produced by the metabolic activity of sponge or other associates under oxic or anoxic condition (Hoffmann et al. 2003). In the presence of oxygen, the sulphide is being oxidized to sulfate by sulphide oxidizer. Nevertheless, under anoxic conditions in sponge tissue, the detoxification of sulphide was performed by sulphide reducers but necessitated the biologically available ferrous ions (Le Pennec et al. 2003; Orcutt et al. 2011). The presence of higher abundance of *Endozoicomonas* in Symbiodiniaceae associated sponge *C. thomasi* indicate that it may play role in the sulfur cycle metabolizing of DMSP (dimethylsulfoniopropionate) to form dimethylsulfide (DMS), dimethyl sulfoxide (DMSO) (Gardner et al. 2016; Osman et al. 2020). These molecules have potential roles in osmoregulation and antioxidant capacity of the host (Gardner et al. 2016).

In conclusion, the present study determined microbial community structure associated with a newly discovered coral eroding sponge species. The results revealed that the sponges had microbial signature different from its surrounding environment. The microbial specificity associated with the *C. thomasi* highlights their putative roles benefiting the sponge holobiont. Investigating the sponge-holobiont is essential to realize a holistic regulatory, physiological, and functional attributes to understand the space competitive mechanisms of sponge in the reef ecosystem.

Acknowledgments

We acknowledge the financial support received through the Rajiv Gandhi Science and Technology Commission, Government of Maharashtra, India, under Maharashtra Gene Bank project (GAP2871). We are thankful to Dr. Christine H. L. Schönberg (University of Western Australia) for her valuable suggestions. Authors thank Dr. Kuldeep More for his kind support in bioinformatics analysis. This study forms part of the Ph.D. thesis of SM. SM and KD acknowledge the CSIR SRF and DST INSPIRE fellowships, respectively. All necessary permissions for sampling and field observation have been obtained by the authors from the competent authorities.

Data Submission

Accession numbers of nucleotide sequences submitted to NCBI are coded as follows: SRA submission SUB7245986, submission ID PRJNA623169, and Bio project PRJN623169.

Competing Interests

The authors declare no competing interests.

Ethical approval

All applicable international, national, and/or institutional guidelines for the care and use of animals were followed by the authors.

Sampling and field studies

All necessary permits for sampling and field observation have been obtained by the authors from the competent authorities.

References

- Achlatis M, Schönberg CHL, van der Zande RM, et al (2019) Photosynthesis by symbiotic sponges enhances their ability to erode calcium carbonate. *J Exp Mar Bio Ecol* 516:140–149. <https://doi.org/10.1016/j.jembe.2019.04.010>
- Arndt D, Xia J, Liu Y, et al (2012) METAGENassist: a comprehensive web server for comparative metagenomics. *Nucleic Acids Res* 40:88. <https://doi.org/10.1093/nar/gks497>
- Audia C, Afonso De Menezes B, Sanches Afonso R, et al (2017) *Williamsia spongiae* sp. nov., an actinomycete isolated from the marine sponge *Amphimedon viridis*. *Int J Syst Evol Microbiol* 67:1260–1265. <https://doi.org/10.1099/ijsem.0.001796>

- Bayer K, Moitinho-Silva L, Brümmer F, et al (2014) GeoChip-based insights into the microbial functional gene repertoire of marine sponges (high microbial abundance, low microbial abundance) and seawater. *FEMS Microbiol Ecol* 90:832–843. <https://doi.org/10.1111/1574-6941.12441>
- Bell JJ (2008) The functional roles of marine sponges. *Estuar Coast Shelf Sci* 79:341–353. <https://doi.org/10.1016/j.ecss.2008.05.002>
- Blanquer A, Uriz MJ, Galand PE (2013) Removing environmental sources of variation to gain insight on symbionts vs. transient microbes in high and low microbial abundance sponges. *Environ Microbiol* 15:3008–3019. <https://doi.org/10.1111/1462-2920.12261>
- Bolyen E, Rideout JR, Dillon MR, et al (2019) Reproducible, interactive, scalable and extensible microbiome data science using QIIME 2. *Nat. Biotechnol.* 37:852–857
- Bourne DG, Morrow KM, Webster NS (2016) Insights into the coral microbiome: Underpinning the health and resilience of reef ecosystems. *Annu Rev Microbiol* 70:317–340. <https://doi.org/10.1146/annurev-micro-102215-095440>
- Caporaso JG, Kuczynski J, Stombaugh J, et al (2010) QIIME allows analysis of high-throughput community sequencing data. *Nat Methods* 7:335–336. <https://doi.org/10.1038/nmeth.f.303>
- Carballo JL, Bautista E, ector Nava H, et al (2013) Boring sponges, an increasing threat for coral reefs affected by bleaching events. *Ecol Evol* 3:872–886. <https://doi.org/10.1002/ece3.452>
- Cárdenas CA, Bell JJ, Davy SK, et al (2014) Influence of environmental variation on symbiotic bacterial communities of two temperate sponges. *FEMS Microbiol Ecol* 88:516–527. <https://doi.org/10.1111/1574-6941.12317>
- Clarke KR, Gorley RN (2015) PRIMER v7 Plymouth Routines In Multivariate Ecological Research. www.primer-e.com. Accessed 15 Feb 2020
- de Goeij JM, van Oevelen D, Vermeij MJA, et al (2013) Surviving in a marine desert: the sponge loop retains resources within coral reefs. *Science* 342:108–110. <https://doi.org/10.1126/science.1241981>
- De K, Nanajkar M, Mote S, Ingole B (2020) Coral damage by recreational diving activities in a Marine Protected Area of India: Unaccountability leading to ‘tragedy of the not so commons.’ *Mar Pollut Bull* 155:111190. <https://doi.org/10.1016/j.marpolbul.2020.111190>
- De K, Sautya S, Mote S, et al (2015) Is climate change triggering coral bleaching in tropical reef? *Curr Sci* 109:1379–1880
- Dubiller N, Mülders C, Ferdelman T, et al (2001) Endosymbiotic sulphate-reducing and sulphide-oxidizing bacteria in an oligochaete worm. *Nature* 411:298–302. <https://doi.org/10.1038/35077067>
- Erwin PM, Coma R, López-Sendino P, et al (2015) Stable symbionts across the HMA-LMA dichotomy: Low seasonal and interannual variation in sponge-associated bacteria from taxonomically diverse hosts. *FEMS Microbiol Ecol* 91:1–11. <https://doi.org/10.1093/femsec/fiv115>

- Esteves AIS, Hardoim CCP, Xavier JR, et al (2013) Molecular richness and biotechnological potential of bacteria cultured from Irciniidae sponges in the north-east Atlantic. *FEMS Microbiol Ecol* 85:519–536. <https://doi.org/10.1111/1574-6941.12140>
- Fan L, Reynolds D, Liu M, et al (2012) Functional equivalence and evolutionary convergence in complex communities of microbial sponge symbionts. *Proc Natl Acad Sci U S A* 109:E1878–E1887. <https://doi.org/10.1073/pnas.1203287109>
- Fiore CL, Baker DM, Lesser MP (2013) Nitrogen biogeochemistry in the Caribbean sponge, *Xestospongia muta*: A source or sink of dissolved inorganic nitrogen? *PLoS One* 8:e72961. <https://doi.org/10.1371/journal.pone.0072961>
- Fiore CL, Labrie M, Jarett JK, Lesser MP (2015) Transcriptional activity of the giant barrel sponge, *Xestospongia muta* holobiont: Molecular evidence for metabolic interchange. *Front Microbiol* 6:364:1–18. <https://doi.org/10.3389/fmicb.2015.00364>
- Gardères J, Bedoux G, Koutsouveli V, et al (2015) Lipopolysaccharides from commensal and opportunistic bacteria: Characterization and response of the immune system of the host sponge *Suberites domuncula*. *Mar Drugs* 13:4985–5006. <https://doi.org/10.3390/md13084985>
- Gardner SG, Nielsen DA, Laczka O, et al (2016) Dimethylsulfoniopropionate, superoxide dismutase and glutathione as stress response indicators in three corals under short-term hyposalinity stress. *Proc R Soc B Biol Sci* 283:1–9. <https://doi.org/10.1098/rspb.2015.2418>
- Gloeckner V, Wehrl M, Moitinho-Silva L, et al (2014) The HMA-LMA dichotomy revisited: An electron microscopical survey of 56 sponge species. *Biol Bull* 227:78–88. <https://doi.org/10.1086/BBLv227n1p78>
- Hentschel U, Piel J, Degnan SM, Taylor MW (2012) Genomic insights into the marine sponge microbiome. *Nat Rev Microbiol* 10:641–654. <https://doi.org/10.1038/nrmicro2839>
- Hill M, Allenby A, Ramsby B, et al (2011) Molecular phylogenetics and evolution Symbiodinium diversity among host clionaid sponges from Caribbean and Pacific reefs: Evidence of heteroplasmy and putative host-specific symbiont lineages. *Mol Phylogenet Evol* 59:81–88. <https://doi.org/10.1016/j.ympev.2011.01.006>
- Hoffmann F, Radax R, Woebken D, et al (2009) Complex nitrogen cycling in the sponge *Geodia barretti*. *Environ Microbiol* 11:2228–2243. <https://doi.org/10.1111/j.1462-2920.2009.01944.x>
- Hoffmann F, Rapp HT, Zöller T, Reitner J (2003) Growth and regeneration in cultivated fragments of the boreal deep water sponge *Geodia barretti* bowerbank, 1858 (Geodiidae, Tetractinellida, Demospongiae). *J Biotechnol* 100:109–118. [https://doi.org/10.1016/S0168-1656\(02\)00258-4](https://doi.org/10.1016/S0168-1656(02)00258-4)
- Hussain A, De K, Thomas L, et al (2016) Prevalence of skeletal tissue growth anomalies in a scleractinian coral: *Turbinaria mesenterina* of Malvan Marine Sanctuary, Eastern Arabian Sea. *Dis Aquat Organ*. 121:79-83. <https://doi.org/10.3354/dao03038>
- Jensen S, Duperron S, Birkeland N-K, Hovland M (2010) Intracellular Oceanospirillales bacteria inhabit gills of *Acesta bivalves*. *FEMS Microbiol Ecol* 74:523–533. <https://doi.org/10.1111/j.1574-6941.2010.00981.x>

- Jensen S, Fortunato SAV, Hoffmann F, et al (2017) The relative abundance and transcriptional activity of marine sponge-associated microorganisms emphasizing groups involved in sulfur cycle. *Microb Ecol* 73:668–676. <https://doi.org/10.1007/s00248-016-0836-3>
- Jeong J-B, Kim K-H, Park J-S (2015) Sponge-specific unknown bacterial groups detected in marine sponges collected from Korea through barcoded pyrosequencing. *J Microbiol Biotechnol* 25:1–10
- Kiran GS, Sekar S, Ramasamy P, et al (2018) Marine sponge microbial association: Towards disclosing unique symbiotic interactions. *Mar Environ Res* 140:169–179. <https://doi.org/10.1016/j.marenvres.2018.04.017>
- Le Pennec G, Perovic S, Ammar MSA, et al (2003) Cultivation of primmorphs from the marine sponge *Suberites domuncula*: Morphogenetic potential of silicon and iron. *J. Biotechnol.* 100:93–108
- Li H, Zhang Y, Li D, et al (2009) Comparisons of different hypervariable regions of rrs genes for fingerprinting of microbial communities in paddy soils. *Soil Biol Biochem* 41:954–968. <https://doi.org/10.1016/J.SOILBIO.2008.10.030>
- Luter HM, Gibb K, Webster NS (2014) Eutrophication has no short-term effect on the *Cymbastela stipitata* holobiont. *Front Microbiol* 5:1–10. <https://doi.org/10.3389/fmicb.2014.00216>
- Matthew S, Salvador LA, Schupp PJ, et al (2010) Cytotoxic halogenated macrolides and modified peptides from the apratoxin-producing marine cyanobacterium *Lyngbya bouillonii* from Guam. *J Nat Prod* 73:1544–1552. <https://doi.org/10.1021/np1004032>
- Moitinho-Silva L, Seridi L, Ryu T, et al (2014) Revealing microbial functional activities in the Red Sea sponge *Stylissa carteri* by metatranscriptomics. *Environ Microbiol* 16:3683–3698. <https://doi.org/10.1111/1462-2920.12533>
- Morganti T, Coma R, Yahel G, Ribes M (2017) Trophic niche separation that facilitates co-existence of high and low microbial abundance sponges is revealed by in situ study of carbon and nitrogen fluxes. *Limnol Oceanogr* 62:1963–1983. <https://doi.org/10.1002/lno.10546>
- Morrow KM, Bourne DG, Humphrey C, et al (2015) Natural volcanic CO₂ seeps reveal future trajectories for host-microbial associations in corals and sponges. *ISME J* 9:894–908. <https://doi.org/10.1038/ismej.2014.188>
- Mote S, Schönberg CHL, Samaai T, et al (2019) A new clionaid sponge infests live corals on the west coast of India (Porifera, Demospongiae, Clionaida). *Syst Biodivers* 17:190–206. <https://doi.org/10.1080/14772000.2018.1513430>
- Muyzer G, de Waal EC, Uitterlinden AG (1993) Profiling of complex microbial populations by denaturing gradient gel electrophoresis analysis of polymerase chain reaction-amplified genes coding for 16S rRNA. *Appl Environ Microbiol* 59:695–700
- Nishijima M, Adachi K, Katsuta A, et al (2013) *Endozoicomonas numazuensis* sp. nov., a gammaproteobacterium isolated from marine sponges, and emended description of the genus *Endozoicomonas* Kurahashi and Yokota 2007. *Int J Syst Evol Microbiol* 63:709–714. <https://doi.org/10.1099/ijs.0.042077-0>

- Oksanen J (2017) Vegan: ecological diversity. R Packag. Version 2.4-4 11. <https://cran.r-project.org/package=vegan>.
- Orcutt BN, Sylvan JB, Knab NJ, Edwards KJ (2011) Microbial ecology of the dark ocean above, at, and below the seafloor. *Microbiol Mol Biol Rev* 75:361–422. <https://doi.org/10.1128/MMBR.00039-10>
- Osman EO, Suggett DJ, Voolstra CR, et al (2020) Coral microbiome composition along the northern Red Sea suggests high plasticity of bacterial and specificity of endosymbiotic dinoflagellate communities. *Microbiome* 8:8. <https://doi.org/10.1186/s40168-019-0776-5>
- Parfrey LW, Moreau CS, Russell JA (2018) Introduction: The host-associated microbiome: Pattern, process and function. In: *Molecular Ecology*. pp 1749–1765
- Pineda M-C, Strehlow B, Sternal M, et al (2017) Effects of suspended sediments on the sponge holobiont with implications for dredging management. *Sci Rep* 7:4925. <https://doi.org/10.1038/s41598-017-05241-z>
- Pineda MC, Strehlow B, Duckworth A, et al (2016) Effects of light attenuation on the sponge holobiont-implications for dredging management. *Sci Rep* 6:39038. <https://doi.org/10.1038/srep39038>
- Pita L, Rix L, Slaby BM, et al (2018) The sponge holobiont in a changing ocean: from microbes to ecosystems. *Microbiome* 6:46. <https://doi.org/10.1186/s40168-018-0428-1>
- Pita L, Turon X, López-Legentil S, Erwin PM (2013) Host rules: spatial stability of bacterial communities associated with marine sponges (*Ircinia* spp.) in the Western Mediterranean Sea. *FEMS Microbiol Ecol* 86:268–276. <https://doi.org/10.1111/1574-6941.12159>
- Poppell E, Weisz J, Spicer L, et al (2014) Sponge heterotrophic capacity and bacterial community structure in high- and low-microbial abundance sponges. *Mar Ecol* 35:414–424. <https://doi.org/10.1111/maec.12098>
- Ramsby BD, Hill MS, Thornhill DJ, et al (2017) Sibling species of mutualistic Symbiodinium clade G from bioeroding sponges in the western Pacific and western Atlantic oceans. *J Phycol* 53:951–960. <https://doi.org/10.1111/jpy.12576>
- Ramsby BD, Hoogenboom MO, Smith HA, et al (2018a) The bioeroding sponge *Cliona orientalis* will not tolerate future projected ocean warming. *Sci Rep* 8:1–13. <https://doi.org/10.1038/s41598-018-26535-w>
- Ramsby BD, Hoogenboom MO, Whalan S, Webster NS (2018b) Elevated seawater temperature disrupts the microbiome of an ecologically important bioeroding sponge. *Mol Ecol* 27:2124–2137. <https://doi.org/10.1111/mec.14544>
- Ribes M, Dziallas C, Coma R, Riemann L (2015) Microbial diversity and putative diazotrophy in high- and low- microbial-abundance mediterranean sponges. *Appl Environ Microbiol* 81:5683–5693. <https://doi.org/10.1128/AEM.01320-15>
- Ribes M, Jiménez E, Yahel G, et al (2012) Functional convergence of microbes associated with temperate marine sponges. *Environ Microbiol* 14:1224–1239. <https://doi.org/10.1111/j.1462-2920.2012.02701.x>

- Roughgarden J, Scott, Gilbert F, et al (2017) Holobionts as units of selection and a model of their population dynamics and evolution. *Biol Theory* 0:3. <https://doi.org/10.1007/s13752-017-0287-1>
- Sacristán-Soriano O, Turon X, Hill M (2020) Microbiome structure of ecologically important bioeroding sponges (family Clionaidae): the role of host phylogeny and environmental plasticity. *Coral Reefs* 39:1285–1298. <https://doi.org/10.1007/s00338-020-01962-2>
- Sawhney S, Mishra JK (2019) Bioactive potential of bacterial endosymbionts isolated from *Lamellodysidea herbacea*, marine sponge from the coast of South Andaman, India, against human bacterial pathogens. *J Appl Pharm Sci* 9:1–8. <https://doi.org/10.7324/JAPS.2019.90301>
- Schönberg CHL, Fang JKH, Carreiro-Silva M, et al (2017) Bioerosion: the other ocean acidification problem. In: Joanna Norkko (ed) *ICES Journal of Marine Science*. Narnia, pp 895–925
- Schorn MA, Jordan PA, Podell S, et al (2019) Comparative genomics of cyanobacterial symbionts reveals distinct, specialized metabolism in tropical dysideidae sponges. *MBio* 10:e00821-19
- Simister RL, Deines P, Botté ES, et al (2012) Sponge-specific clusters revisited: a comprehensive phylogeny of sponge-associated microorganisms. *Environ Microbiol* 14:517–524. <https://doi.org/10.1111/j.1462-2920.2011.02664.x>
- Slaby BM, Hackl T, Horn H, et al (2017) Metagenomic binning of a marine sponge microbiome reveals unity in defense but metabolic specialization. *ISME J* 11:2465–2478. <https://doi.org/10.1038/ismej.2017.101>
- Soares AR (2016) Diversity and specificity of the marine sponge microbiome as inspected by next generation sequencing. Ph. D. dissertation. University of Algarve, Portugal . Accessed online <https://core.ac.uk/download/pdf/61528073.pdf>
- Southwell MW, Weisz JB, Martens CS, Lindquist N (2008) In situ fluxes of dissolved inorganic nitrogen from the sponge community on Conch Reef, Key Largo, Florida. *Limnol Oceanogr* 53:986–996. <https://doi.org/10.4319/lo.2008.53.3.0986>
- Steindler L, Beer S, Ilan M (2002) Photosymbiosis in intertidal and subtidal tropical sponges. *Symbiosis* 33:263–273
- Steinert G, Taylor MW, Deines P, et al (2016) In four shallow and mesophotic tropical reef sponges from Guam the microbial community largely depends on host identity. *PeerJ* 4:e1936. <https://doi.org/10.7717/peerj.1936>
- Steinert G, Wemheuer B, Janussen D, et al (2019) Prokaryotic diversity and community patterns in antarctic continental shelf sponges. *Front Mar Sci* 6:<https://doi.org/10.3389/fmars.2019.00297>
- Teruya T, Nakagawa S, Koyama T, et al (2004) Nakiterpiosin and nakiterpiosinone, novel cytotoxic C-nor-D-homosteroids from the Okinawan sponge *Terpios hoshinota*. *Tetrahedron* 60:6989–6993. <https://doi.org/10.1016/J.TET.2003.08.083>
- Thacker RW, Freeman CJ (2012) Sponge–Microbe Symbioses: Recent Advances and New Directions. In: Becerro MA, Uriz MJ, Maldonado M TX (ed) *Advances in Sponge Science: Phylogeny, Systematics, Ecology*. *Advances in marine biology* . Academic Press, Amsterdam, pp 57–111

- Thomas T, Moitinho-Silva L, Lurgi M, et al (2016) Diversity, structure and convergent evolution of the global sponge microbiome. *Nat Commun* 7:11870. <https://doi.org/10.1038/ncomms11870>
- Tout J, Astudillo-García C, Taylor MW, et al (2017) Redefining the sponge-symbiont acquisition paradigm: sponge microbes exhibit chemotaxis towards host-derived compounds. *Environ Microbiol Rep* 9:750–755. <https://doi.org/10.1111/1758-2229.12591>
- Villegas-Plazas M, Wos-Oxley ML, Sanchez JA, et al (2019) Variations in microbial diversity and metabolite profiles of the tropical marine sponge *Xestospongia muta* with season and depth. *Microb Ecol* 78:243–256. <https://doi.org/10.1007/s00248-018-1285-y>
- Wang Q, Garrity GM, Tiedje JM, Cole JR (2007) Naive Bayesian classifier for rapid assignment of rRNA sequences into the new bacterial taxonomy. *Appl Environ Microbiol* 73:5261–7. <https://doi.org/10.1128/AEM.00062-07>
- Webster NS, Thomas T (2016) The Sponge Hologenome. *MBio* 7:e00135-16. <https://doi.org/10.1128/MBIO.00135-16>
- Wulff J (2001) Assessing and monitoring coral reef sponges: why and how? *Bull Mar Sci* 69:831–846

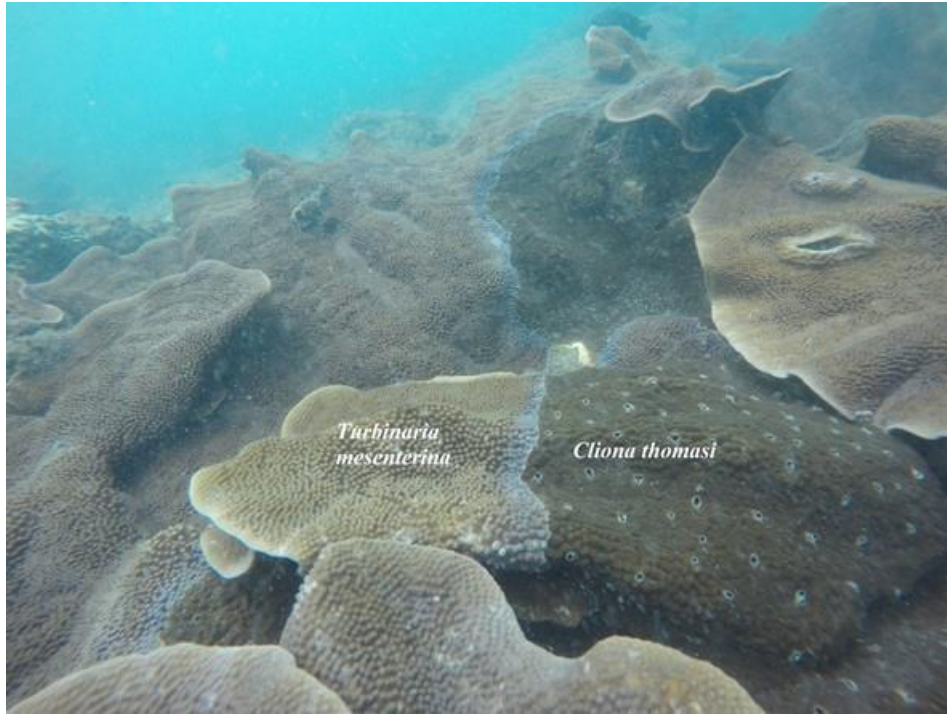


Figure 1: *In-situ* observations of sponge *Cliona thomasi* growing over *Turbinaria mesenterina* in Malvan Marine sanctuary .

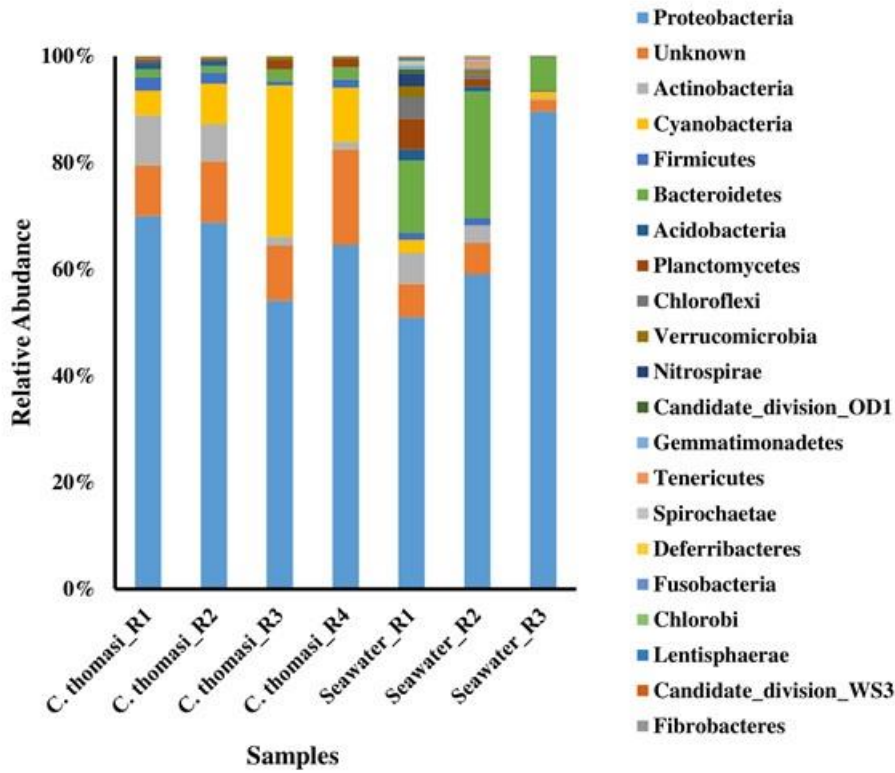


Figure 2: Relative abundance of prokaryotic communities associated with the sponge *Cliona thomasi* and environmental samples at phylum level.

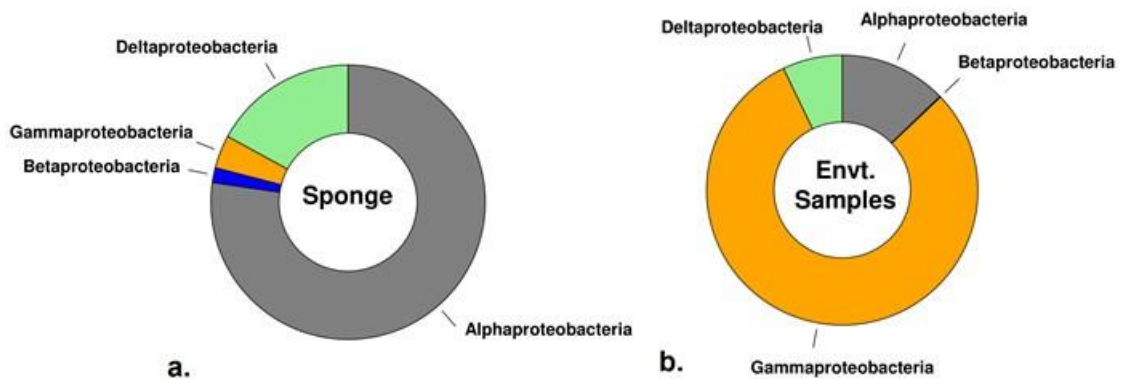


Figure 3: Relative abundance variations within Proteobacteria associated with the sponge and environmental samples

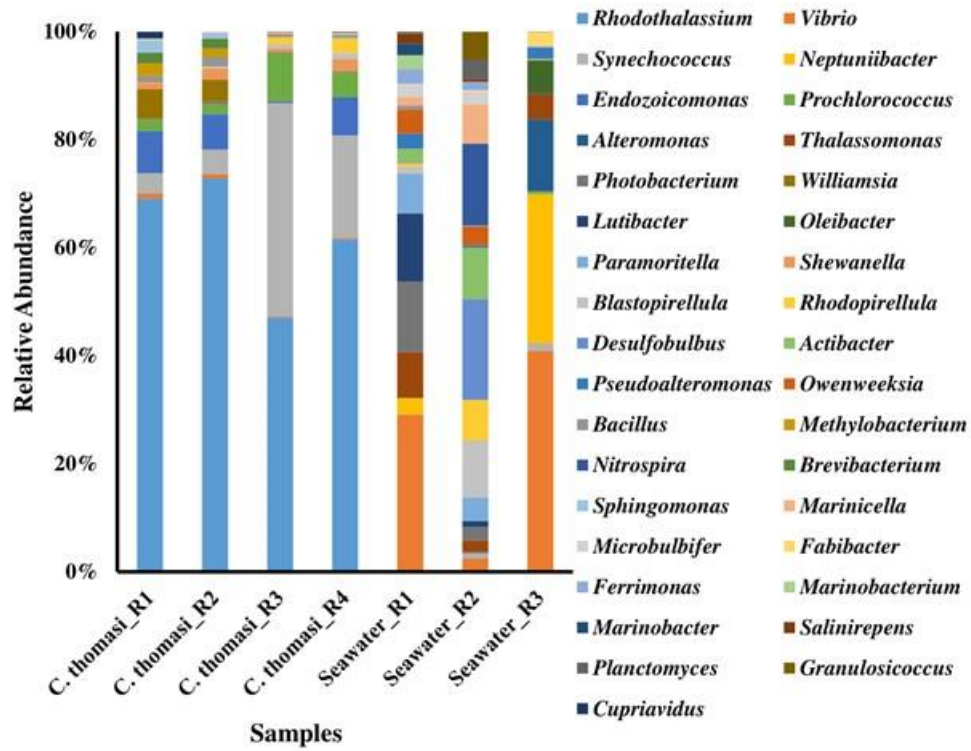


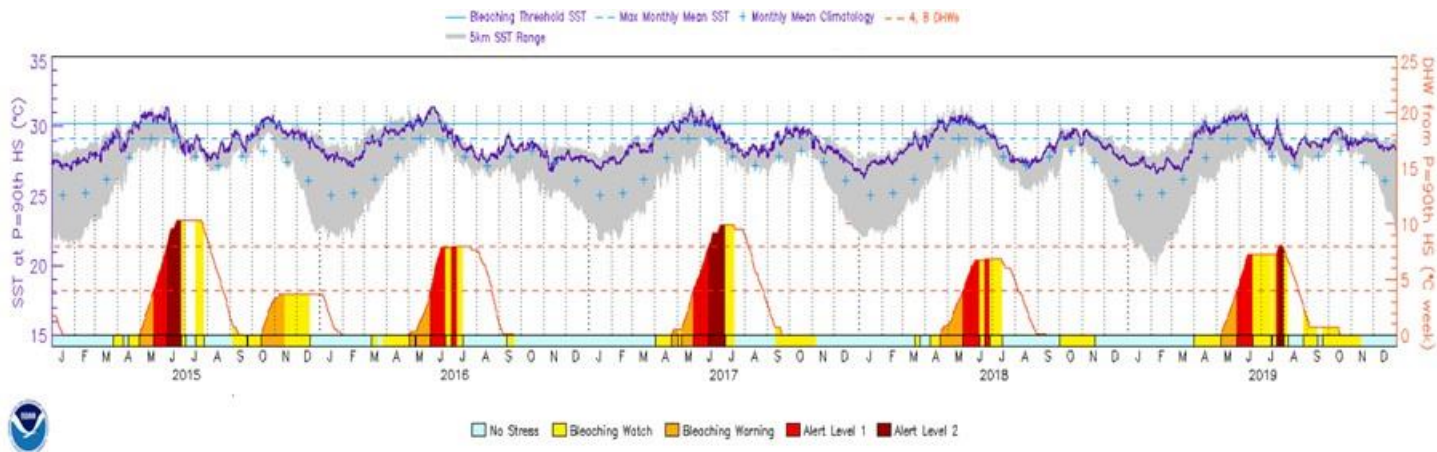
Figure 4: Relative abundance of prokaryotic communities associated with the sponge *Cliona thomasi* and environmental samples at genus level

Supplementary Information:

Bacterial diversity associated with a newly described bioeroding sponge, *Cliona thomasi*, from the coral reefs on the West Coast of India

Analysis of Sea Surface Temperature (SST) for coral bleaching study:

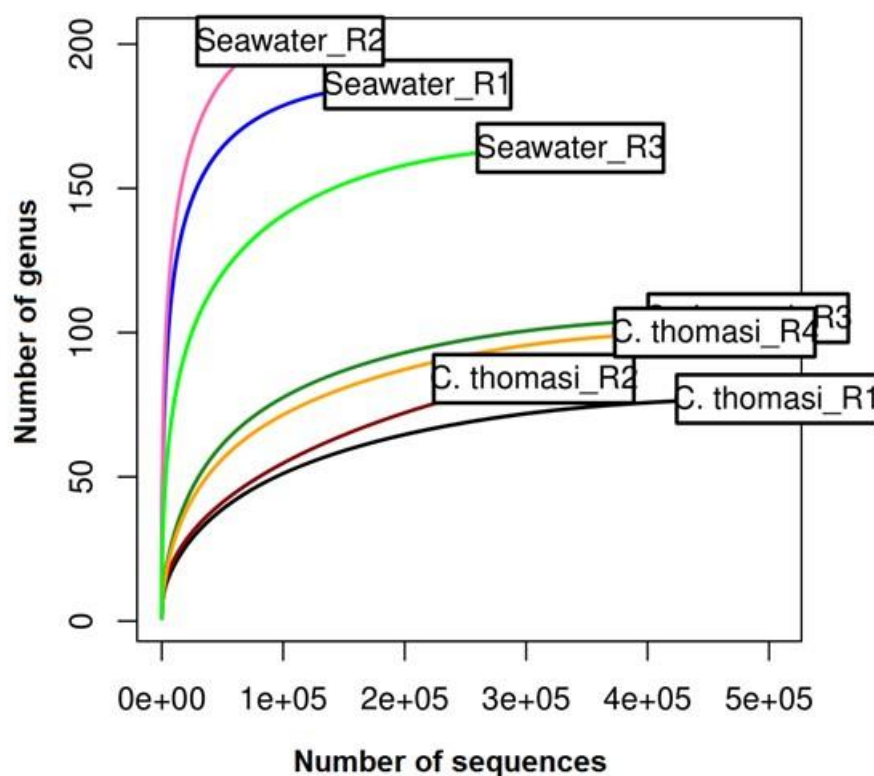
Analysis of Sea Surface Temperature (SST) trends and daily SST anomaly from January 2015 to April 2019 for the Grande Island was carried out using the National Oceanic and Atmospheric Administration (NOAA) Coral Reef Watch's (CRW) near real time daily global 5km (0.05 degree exactly) satellite SST time series data from the western Indian virtual station/gauges (available from NOAA Coral Reef Watch 2019 <https://coralreefwatch.noaa.gov>). Degree of Heating weeks, bleaching threshold was computed from the same dataset using the CRW online data visualizing platform 'CoralTemp' Version 3.1 (available at https://coralreefwatch.noaa.gov/product/5km/index_5km_composite.php).



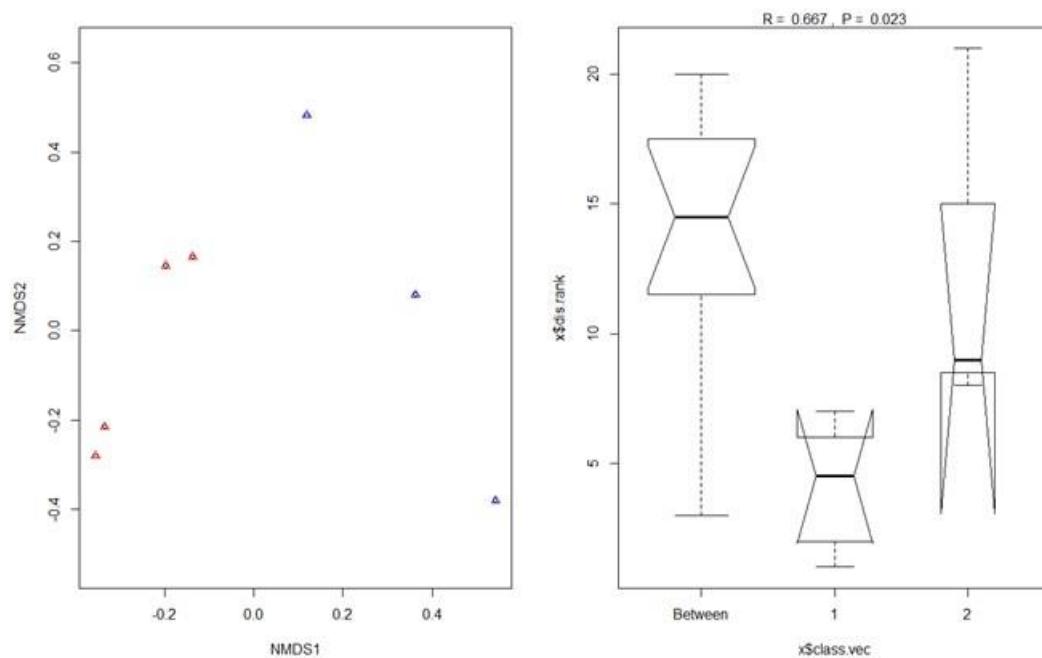
Supplementary Figure 1: National Oceanic and Atmospheric Administration (NOAA) Coral Reef Watch's (CRW) Sea Surface temperature time series data indicating SST trends, SST anomaly, degree of heating weeks and bleaching threshold during 2015-2019 from NOAA 5 km regional virtual stations over Western Indian coast coral reefs

Supplementary Table 1: Sequencing summary and alpha diversity indices among the samples

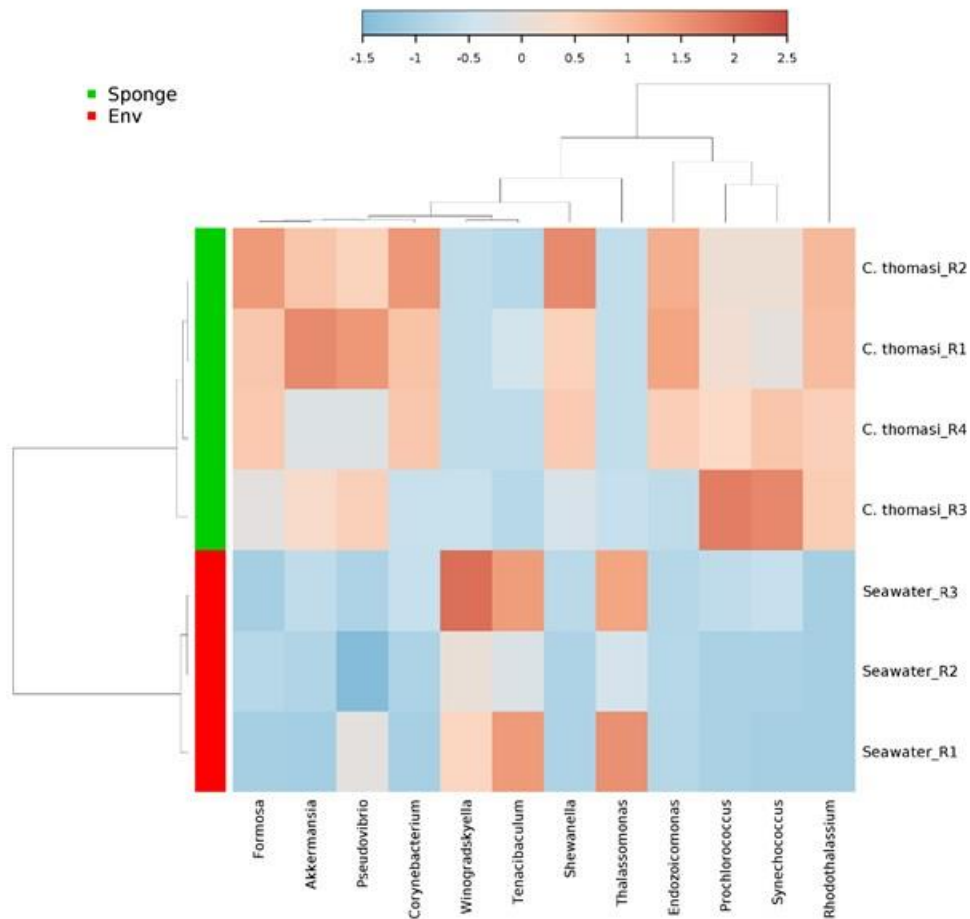
Sample name	Total reads	Filtered reads	Taxonomically assigned reads	Taxonomically assigned OTUs	Shannon	Simpson's	Taxonomy Richness at genus level
<i>C. thomasi</i> R1	524951	521759	506451	2531	1.88	0.60	76
<i>C. thomasi</i> R2	317333	314693	306323	3685	1.69	0.54	84
<i>C. thomasi</i> R3	551000	544046	482839	9581	1.69	0.68	104
<i>C. thomasi</i> R4	493288	489717	455423	7832	1.91	0.66	99
Seawater R1	364284	343613	210786	22682	3.26	0.91	185
Seawater R2	408813	400188	105752	18672	4.11	0.97	200
Seawater R3	479774	476592	336540	34773	2.13	0.78	163



Supplementary Figure 2: Rare faction curve showing the vsrations between sponge and enviornment samples

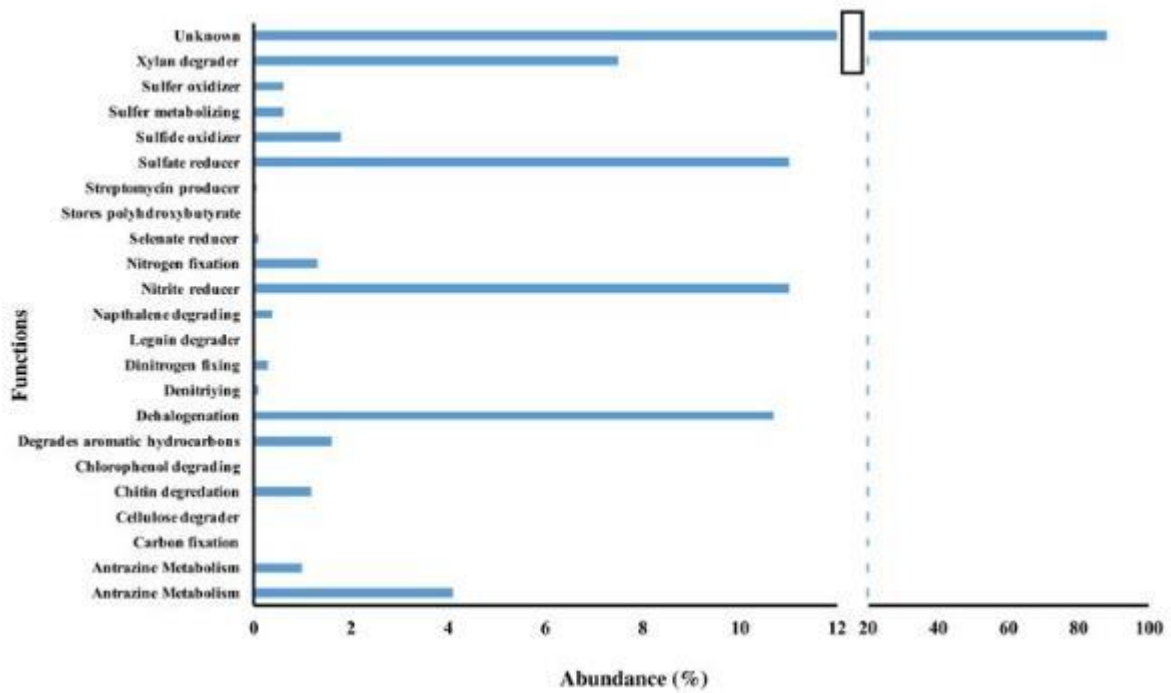


Supplementary Figure 3: Non Multidimensional Scaling of bacterial abundance data on genus level between sponge (Red color marks) and environmental samples (blue color marks) in nMDS plot and Anosim plot



Supplementary Figure 4: Heat map showing the 16S rRNA gene amplicon assigned significantly different genera among the *Cliona thomasi*, and environmental samples

Supplementary Table 2: Bacterial community dissimilarity between sponge and environmental samples at bacterial species level using SIMPER analysis				
Average dissimilarity = 75.65				
	Group Sponge	Group Env. samples		
Species	Av. Abund	Av. Abund.	Av. Diss.	Contrib%
<i>Rhodothalassium</i>	34.64	1.38	3.02	3.99
<i>Vibrio</i>	2.86	44.67	3.72	4.92
<i>Synechococcus</i>	18.05	7.02	1.18	1.56
<i>Neptuniibacter</i>	0.50	27.62	2.43	3.21
<i>Photobacterium</i>	1.41	12.84	1.05	1.39
<i>Alteromonas</i>	0.50	15.85	1.42	1.87



Supplementary Figure 5: Taxonomy-based functional profiling of bacterial communities associated with the sponge *Cliona thomasi*

Supplementary Table 3: Dominant bacterial community associated with *Cliona thomasi* and other Clionaid sponges.

Dominant Bacterial community	<i>Cliona thomasi</i> (Present study)	<i>Cliona orientalis</i> (Ramsbaya et al. 2018)	<i>Cliona orientalis</i> (Pineda et al. 2016)	<i>Cliona orientalis</i> (Pineda et al. 2017)	<i>Cliona varians</i> (Sacrista-Soriano et al. 2020)	<i>Cliona viridis</i> (Soares, 2016)	<i>Cliona viridis</i> (Blancher et al. 2013)	<i>Cliona tamula</i> (Sacrista-Soriano et al. 2020)	<i>Cliona celeata</i> (Jeong et al. 2015)	<i>Cliona celata</i> (Soares, 2016)	<i>Cliona deltrix</i> (Sacrista-Soriano et al. 2020)
Alphaproteobacteria	+	+	+	+	+	+	+	+	+	+	+
Betaproteobacteria	+	+	-	-	-	+	-	-	+	+	-
Gammaproteobacteria	+	+	+	+	+	+	-	+	+	+	+
Deltaproteobacteria	+	+	+	+	+	+	-	+	+	+	-
Actinobacteria	+	+	-	-	+	+	+	+	+	-	-
Cyanobacteria	+	+	+	+	+	+	-	+	+	+	+
Firmicutes	+	-	+	-	-	+	-	-	+	+	-
Bacteroidetes	+	+	-	-	+	+	-	+	+	-	-
Acidobacteria	+	-	-	-	-	+	-	-	+	-	-
Planctomycetes	+	+	+	+	+	+	-	+	+	-	-
Chloroflexi	+	+	+	-	-	+	-	-	+	-	-
Verrucomicrobia	+	+	-	-	-	+	-	-	+	-	-
Nitrospirae	+	-	-	-	+	+	-	-	+	+	-
Gemmatimonadetes	+	+	-	-	-	+	-	-	+	-	-
Tenericutes	+	-	-	-	-	-	-	-	-	-	-
Spirochaetae	+	-	-	-	-	-	-	-	-	-	-
Chlamydiae	+	+	-	-	-	-	-	-	+	-	-
Poribacteria	-	-	-	-	-	-	-	-	+	-	-